



The Leader in Polar Adventures

ARCTIC 2026

Iceland to Greenland

Total Solar Eclipse



ULTRAMARINE

DESIGNED TO GO BEYOND

Contents

1	Overview
2	Itinerary
9	Your Ship
11	Included Activities
12	Adventure Options
13	Departure Dates
14	Inclusions and Exclusions
15	Your Expedition Team
16	Meals on Board
17	Possible Excursions
20	Eclipse Experts
21	Packing Checklist



Overview

Iceland to Greenland: Total Solar Eclipse

Creating one-of-a-kind experiences in the remote Polar Regions is our passion. It's what our expedition team—globally recognized as the best in the industry—does so well. We innovate. We create. We deliver. It requires expertise, experience—and sometimes it demands patience—a lot of it.

The genesis for our 13-day *Iceland to Greenland: Total Solar Eclipse* itinerary dates back to November 24, 2003, the day Quark Expeditions became the first and only operator to successfully lead a total solar eclipse voyage in remote Antarctica. On that day, we provided 100 people, from 17 different nations, the experience of becoming the first-ever humans to witness a total solar eclipse in Antarctica. Now we've decided to achieve a comparable feat in the Arctic. However, with innovation as our DNA, we set out to make it distinct from any other eclipse-viewing experience in the industry.

The last time anyone witnessed a total solar eclipse north of the Arctic Circle was 2008. The total eclipse that will occur on August 12, 2026, is part of a cycle of solar eclipses that only repeats every 18 years. So, of course, we want to get it right.

A couple of years ago, after a decade of dreaming, we assembled a taskforce of eclipse experts, a meteorologist and members of our Expedition Team to research the geography, terrain, angles of the sun in the sky, and Arctic weather patterns to prepare for one of the most rare experiences on the planet—observing a total solar eclipse in the High Arctic. Not only do we want our guests to enjoy the best solar eclipse viewing imaginable—on *Ultramarine*, one of the most technologically-advanced ships in the Polar Regions—but we knew from the outset that our eclipse itinerary had to contain layers of immersive experiences and unrivalled off-ship adventures that no one else could offer.

In addition to phenomenal eclipse viewing in the High Arctic of East Greenland, you'll get to venture through the Westfjords—one of the unsung gems of Iceland. You'll also discover the secrets of Northeast Greenland National Park—the largest national park in the world—where we will cruise the 110-kilometer King Oscar Fjord. You'll sail across the Denmark Strait—not once but twice—and you'll have the opportunity to explore parts of Greenland on one of *Ultramarine's* twin-engine helicopters.

We've enlisted the two globally-respected eclipse experts, author-science journalist Dave Baron and eclipse-cartographer Michael Zeiler (see page 20), to help deepen your understanding of celestial mechanics, observational astronomy and all things related to eclipse-viewing. You'll also learn about Icelandic and Greenlandic traditions and culture, about ice formations, about seeing the Polar Regions from the viewpoint of an Arctic tern as you fly in a helicopter over the vast Arctic landscape. Ultimately, you'll learn why we should never stop dreaming and tapping into the power of imagination. Most of all, you'll learn the value of waiting for the perfect polar adventure that will change your life forever.

EXPEDITION IN BRIEF



Witness a total solar eclipse from a polar ship in the High Arctic



Gain insight into the cultural and scientific significance of solar eclipses with guest experts David Baron Michael Zeiler



Heli-flightsee over remote Greenland



Cross the Arctic Circle twice—southbound and northbound



Explore seldom-visited Westfjords, the hidden gem of west Iceland



Sail across the Denmark Strait



Witness the wildlife of Northeast Greenland National Park



Cruise the 110-kilometer King Oscar Fjord.



Itinerary

DAY 1 | ARRIVE IN REYKJAVIK, ICELAND

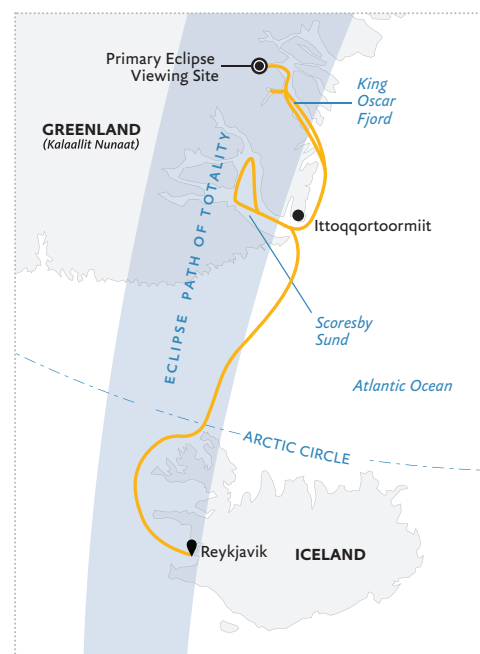
Arrive in Reykjavik and transfer independently to your included hotel for the night. Depending on your arrival time, you may wish to explore sites of the fascinating capital of Iceland.

DAYS 2 & 3 | EMBARK IN REYKJAVIK AND EXPLORE THE WESTFJORDS ON ULTRAMARINE

After breakfast, you will be transferred to your ship, the technologically-advanced *Ultramarine*. Today we set sail for what's often referred to as "Iceland's best-kept secret"—the Westfjords. This rugged peninsula, on the remote northwestern tip of Iceland, is a stunning region of mountains and fjords, hence its anglicized name, Westfjords. Mountains slope down to the sea in a dramatic fashion, providing plenty of opportunities for incredible landscape photography. We'll spend the day

exploring the fjords and shores of one of Iceland's oldest regions (home to volcanic rocks dating back 16 million years) by Zodiac and ship, and during guided shore landings.

The views are diverse: dramatic cliffs, gushing waterfalls, colorful beaches, rolling green hills, high moorlands dotted with rocky outcrops and tiny lakes. You'll likely spot Icelandic ponies and shaggy sheep grazing the hillsides. A few outposts of civilization include small fishing communities nestled on the edges of the fjord and along the shores of the Denmark Strait. These modest settlements preserve a maritime heritage that dates back to the heady days of the Viking era. Possible community visits include Vigur Island in Safarðardjúp fjord, and the little town of Ísafjörður, noted for its wooden houses, fishing boats, and hospital-turned-community center.



ICELAND TO GREENLAND:
Total Solar Eclipse
Onboard *Ultramarine*

DAY 4 | AT SEA: CROSSING THE DENMARK STRAIT

As we sail north across the Denmark Strait between Iceland and Greenland, your Expedition Team will prepare you for the exciting adventures ahead—both on and off-ship. Our team of polar experts will present on a wide range of topics, including Arctic history, wildlife, geology, and climatology. The team will also search for seabirds soaring about the ship—and they'll most certainly alert you whenever there's a whale sighting.

DAYS 5 & 6 | NORTHEAST GREENLAND: EXPLORING KANGERLUK KONG OSCAR AND COUNTDOWN TO THE ECLIPSE

Navigating within the boundaries of the Northeast Greenland National Park—the planet's largest national park at 972,000 square kilometers—we will sail into Kangerluk Kong Oscar, also known as King Oscar Fjord, on the northern border of Scoresby Land peninsula. This major fjord system, popular for its famously

bright sandstone, stretches 110 kilometers long and 10 to 25 kilometers wide. When conditions allow, guests will have the opportunity to hike in Skipperdal Valley, where mineral deposits have painted the hills red and magenta—so landscape photographers take note.

As we prepare to position the ship in order to maximize views of the solar eclipse on Day 7, we'll also have the opportunity to visit Blomsterbugten (also known as Flower Bay) on Ymer Island. The floral name was chosen by noted archeologists Gunnar Seidenfaden and Arne Noe-Nygaard during the Lauge Koch expedition in 1929 upon discovering an abundance of specimens for their botanical collection. Blomsterbugten is also home to a little hut known as "Varghytten" (the wolf hut). Built in 1929, the small hut is still used by the Sirius Patrol, a specialized military unit of the Danish Armed Forces. It's possible we'll also hike to the seldom-visited Noa Lake.

There will be a palpable sense of excitement in the air as anticipation builds for our much-awaited eclipse viewing. Behind the scenes, your Expedition Leader, guest eclipse cartographer Michael Zeiler and the Ship Captain will work closely together—monitoring sea and ice conditions and atmospheric forecasts—to strategically position *Ultramarine* in the best location possible to maximize your views of the solar eclipse. Relatively few humans get to experience the awe of a polar expedition—but even fewer get to combine the wonders of an Arctic expedition with a solar eclipse viewing.

Expect presentations by our two special guests, eclipse experts David Baron and Michael Zeiler, in the lead-up to the August 12 Solar Eclipse. (See profiles, page 20). These veteran eclipse enthusiasts will draw on their vast knowledge to ensure you have an eclipse viewing like no other.



On the evening of Day 6, guest expert David Baron will deliver a keynote presentation titled “Scientific America: The Eclipse That Enlightened A Nation,” during which he’ll delve into the societal impacts of eclipses. Baron will discuss how epic events such as a solar eclipse have spurred societies—and specific individuals—to achieve scientific greatness.

DAY 7 | SOLAR ECLIPSE VIEWING: IN THE PATH OF TOTALITY

Ultramarine will sail further into King Oscar Fjord where the team will identify the most optimal viewing point along the path of totality. With the total eclipse of the sun lasting 2 minutes and 17.2 seconds, this region of the Arctic provides the longest duration of totality along the entire eclipse path. The eclipse will begin at 2:34 pm; totality will begin at 3:34 pm and end at 3:36 pm. The eclipse viewing experience, a duration of 2 hours, 1 minute, and 3 seconds, will conclude at 4:35 pm.

This 2026 eclipse is part of Saros series 126, which is a cycle of solar eclipses that repeats approximately every 18 years. It’s worth noting that total solar eclipses in Polar Regions are relatively rare due to the smaller land area and the fact that the sun only illuminates each pole for part of the year. To reiterate, the last total solar eclipse observable north of the Arctic Circle was 2008.

The Quark Expeditions team and guest eclipse experts have been and will continue to research the geography of this region as we prepare for the event. Right up until the day of the eclipse itself, our team will study the mountainous terrain, the angles of the sun in the sky, and weather patterns to determine the best possible viewing experience.

Your Expedition Leader will outline the day’s agenda in the days and hours leading up to the total eclipse.

DAYS 8 - 11 | EXPLORING SCORESBYSUND AND SURROUNDING REGION

As we begin to make our way home—still overwhelmed no doubt by the previous day’s eclipse experience—we’ll visit Scoresby Sound (Scoresby Sund), a large fjord system on the eastern coast of Greenland. Except for a small population of Inuit at Ittoqqortoormiit, near the mouth of the fjord, Scoresby Sund is largely uninhabited. Warm water polynyas (areas of open water surrounded by sea ice) near the mouth of the fjord support diverse ecosystems of flora and fauna, which is unusual for the Arctic. Numerous mountains, valleys and glaciers line the fjords, giving rise to a spectacular collection of icebergs.

We also plan to journey through Bjornar (Nannut Qeqertaat), a group of islands (also known as Bear Islands) located northeast of Milne Land, named during the 1891-92 Den Østgrønlandske (East



Greenland) expedition. The collection of 11 main islands fascinates visitors with its maze of channels, steep cliff faces and fascinating geology.

While exploring this area, you'll enjoy Zodiac cruises and shore visits to several locations. We'll also watch for grazing muskoxen as 40 percent of the world's population lives in Northeast Greenland National Park. Sailing through spectacular Scoresby Sund, where many icebergs are birthed, you'll immediately appreciate why previous visitors have described it as the most beautiful fjord system on the planet. We'll visit sites such as Vikingbukta, known for its shoreline of basalt columns, and Sydkap, where you can explore the colorful tundra and remains of ancient Thule settlements.

DAY 12 | AT SEA: CROSSING THE ARCTIC CIRCLE ONCE MORE

Our Arctic adventure winds down as we sail back across Denmark Strait, southbound this time. We invite you to use your remaining time onboard to attend an educational presentation by one of our experts, share your photos, book a massage in *Ultramarine's* Tundra Spa, sip an icy cocktail in the bar—or ask any questions you may have for our enthusiastic Expedition Team, who will also alert guests of any wildlife sightings.

DAY 13 | DISEMBARK IN REYKJAVIK

You'll disembark in Reykjavik, Iceland's bustling capital, at the end of your journey. If you have booked post-expedition accommodation, we provide a transfer to a central downtown location.

EXPEDITION SPIRIT

Embracing the unexpected is part of the legacy—and excitement—of expedition travel. When traveling in extremely remote regions, your Expedition Team must consider the sea, ice, wildlife, and weather to guide the route and itinerary details. This itinerary is a tentative outline of what you'll experience on this voyage; please be aware that no specific itinerary can be guaranteed. By the same token, wildlife encounters as described are expected but not guaranteed. Your Expedition Team will use their considerable experience to seek out wildlife in known habitats, but the presence of any particular species of bird or marine wildlife is not a guarantee.





Arrival and Departure Details, and International Flight Planning

	DAY 1	DAY 2	EXPEDITION DAYS	FINAL DAY		
<i>International flight in*</i> Arrival and hotel night	Embarkation	On ship or landing days	Disembarkation	<i>International flight onward**</i>		
<i>* Arrive anytime on Day 1 or earlier. Day 1 includes an optional briefing.</i> <i>International flights are not included in the cost of the voyage.</i>						

As you prepare for your journey, you may be interested to know your arrival and departure details. Since air transportation is not included in the cost of your expedition, you have some flexibility in planning your flights.

Arrival Day and Embarkation

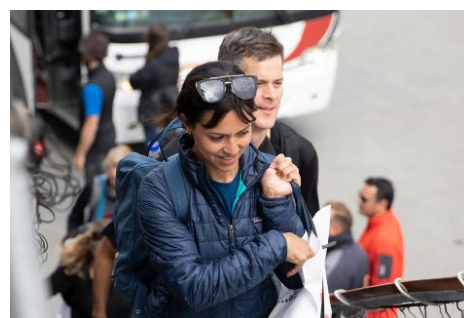
ARRIVING IN REYKJAVIK

You may arrive in Reykjavik at any time during Day 1 of the itinerary and make your way to the included hotel.

EMBARKATION IN REYKJAVIK

On the morning of Day 2, your luggage will be collected from the lobby of your hotel, transferred to the ship and stored in your cabin.

Ship embarkation will occur on Day 2 of your itinerary, usually around 4 pm. You and your shipmates will meet in the lobby of your hotel and board the waiting buses for transfer to the ship. Information about transfer timing will be posted in your Reykjavik hotel.



Final Day and Departure

DISEMBARKATION IN REYKJAVIK AND ONWARD

Your ship is scheduled to arrive in Reykjavik between 7 am and 8 am local time. After breakfast, and once the ship has docked, you will have time to bid farewell to your Expedition Team and shipmates before completing your disembarkation. The process takes about an hour. After disembarkation, you will transfer to a central downtown location.

Arrival and Departure Transfers

REYKJAVIK AIRPORT TRANSFERS

ARRIVAL

An arrival transfer in Reykjavik is not included; if you require a transfer to the city, you will need to arrange your own transportation. Most airports used on our voyages have good taxi ranks in the arrivals area, or you can often pre-book a transfer online.

DEPARTURE

A transfer is provided from the Reykjavik port to a central downtown location at the end of the expedition. A transfer to the airport is not included.

PLEASE NOTE

Included Hotel Accommodations:

Your included accommodation begins on Day 1 of your itinerary, and the specific hotel(s) will be indicated in your final voyage confirmation. If you are arriving prior to Day 1 of your expedition or are staying after the disembarkation day, you can book directly with the hotel or through a third party.





Our Fleet of Small Polar Vessels

Quark Expeditions boasts the most diverse polar-class fleet of any polar operator, and the ability to offer you this incredible voyage on one of our ice strengthened vessels.

The entire Quark Expeditions fleet is built for comfort—and for challenging polar environments, allowing us to take you to places ordinary cruise companies wouldn't dream of going.

Plus, you'll do so while enjoying excellent amenities and superbly comfortable cabins.



Your Ship

ULTRAMARINE

The newest ship in our fleet, *Ultramarine* is designed to go beyond the familiar in polar exploration, to immerse guests in parts of the Polar Regions where few humans have ever set foot.

Equipped with two twin-engine helicopters and 20 quick-launching Zodiacs, *Ultramarine* offers the most off-ship adventure activities in the industry. Guests can enjoy two restaurants (Balena and Bistro 487), Tundra Spa, a sauna-with floor-to-ceiling windows, spacious suites and abundant wildlife-viewing spaces. *Ultramarine* also features advanced sustainability systems—which exceed all industry standards.

Ultramarine is perfectly designed to deliver the ultimate polar expedition experience.

SHIP SPECIFICATIONS:

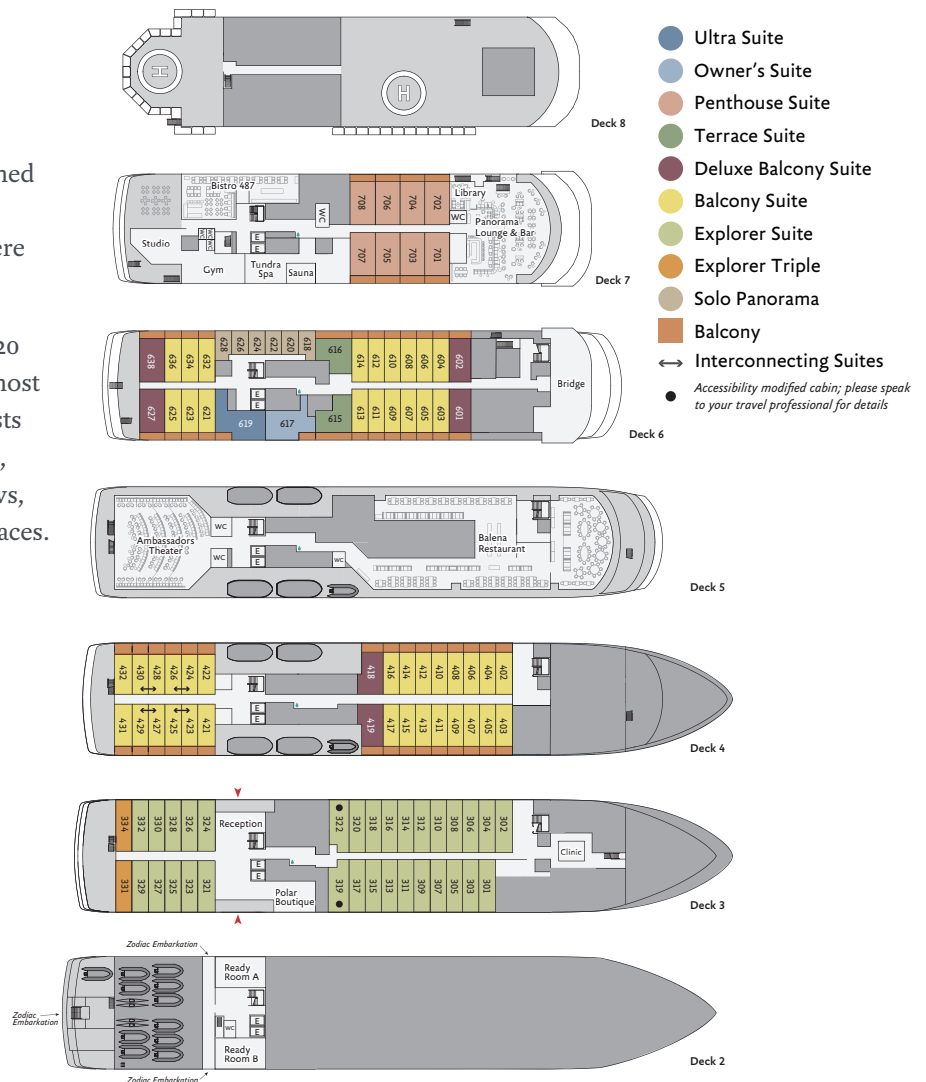
Staff and Crew: 140

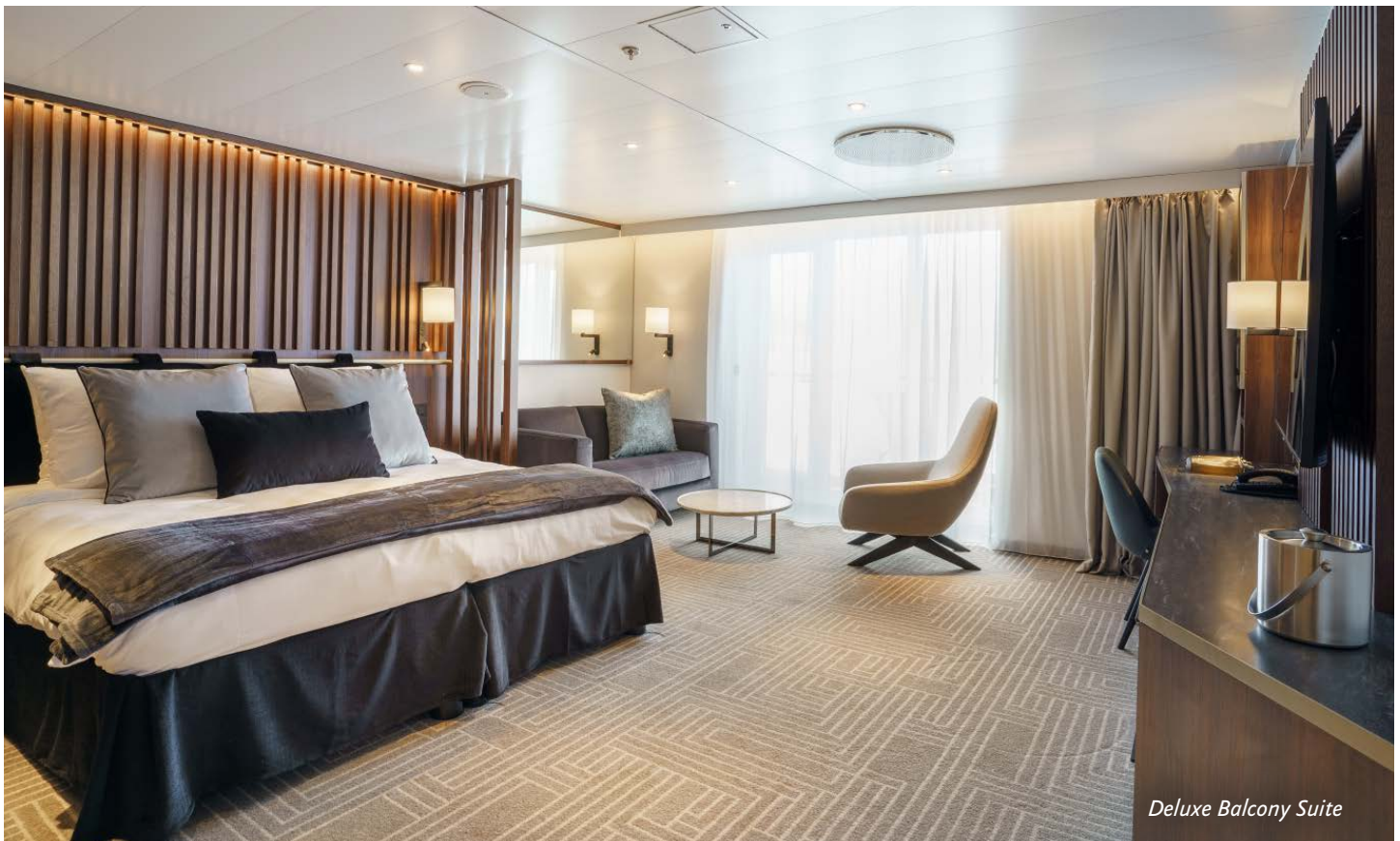
Guests: 199

Lifeboats: 4, fully enclosed

Ice Class: PC6

Visit QuarkExpeditions.com to view deck plan details.





Deluxe Balcony Suite



Sauna



Panorama Lounge



Fitness Center



Balena Restaurant



Included Activities

These off-ship activities are included in your voyage.

Ready for a little adventure beyond your ship? Each Quark Expeditions® voyage offers a variety of recreational activities to enhance your polar experience.

ECLIPSE-VIEWING ACTIVITIES

Specially curated eclipse-viewing activities are scheduled for Day 7. Each guest will be given special protective eclipse eye glasses.

FLIGHTSEEING

While polar landscapes are spectacular from the sea, they're even more stunning from the air, a view you can enjoy while seated in one of the two twin-engine helicopters stationed on *Ultramarine*. Typically in groups of fewer than 10, you will experience an unforgettable aerial tour of the Arctic during a 10- to 15-minute flightseeing excursion that's included in the cost of the voyage. Additional helicopter activities may also be available for purchase on board. Please note: all helicopter operations are weather- and logistics-dependent.

ZODIAC CRUISING

Zodiacs are the workhorses of polar expeditions, taking you to places the ships can't access, allowing you to reach remote shorelines, explore shallow inlets and search for wildlife. Expedition staff make stepping in and out of them safe and comfortable, and your Zodiac drivers will provide active interpretation, making the landscape come even more alive.

HIKING

Led by experienced staff, exploring on foot is one of the best ways to appreciate the polar landscapes. Our guides are able to accommodate a range of skill levels to suit every guest.

PHOTOGRAPHY

Documenting your voyage so you can take the memories home is a rewarding experience. Our photography guide will help you hone your skills to capture the beauty of the polar regions.

PRESENTATIONS

Enjoy daily chats with and presentations by our world-class onboard polar experts—expedition guides, specialists, photography guides and other special guests who will introduce you to the fascinating history, biology, ornithology, glaciology and geology of the region, and much, much more.

BONUS This voyage also features eclipse-focused special presentations by author-science journalist Dave Baron and eclipse cartographer Michael Zeiler.

POLAR PLUNGE

This rite of passage, scheduled only once per expedition, gives you the chance to jump safely into the bracing Arctic waters under the watchful eye of our staff—and just about every single camera on board!

Contact your Polar Travel Adviser or your Travel Professional for more information about your Included Activities and Adventure Options, including the necessary experience, physical requirements and cost.



Adventure Options

These off-ship activities cost extra and should be booked in advance.



PLEASE NOTE

For all paid activities pre-booking is required. We recommend booking early as spaces fill quickly.

SEA KAYAKING

Imagine gliding across the surface of a bay in the presence of icebergs and glaciers. Our Sea Kayaking program is a great way to intimately explore your surroundings. A small group of kayakers will plan to go out multiple times per voyage as an alternative to shore landings or Zodiac cruises.

The number of opportunities to kayak is weather dependent, and will be conducted only during calm conditions. Prior kayaking experience is required, and you must be able to do a wet exit to participate. Beginners interested in kayaking should consider participating in the Paddling Excursion.

PADDLING EXCURSION

If you're interested in kayaking but would like to try something a bit less demanding than Sea Kayaking, you're the perfect candidate to sign up for a one-time paddle on our stable sit-on-top kayaks—perfect for anyone with minimal or no kayaking experience. Small groups of passengers will be taken out on calm days, with our expert guides

always present to provide instruction and help you connect with the polar sea. Two groups of 10 will be pre-booked, and once successfully completed, any subsequent outings will be offered via lottery on board.

TUNDRA TO TABLE


Our ground-breaking Tundra to Table experience offers guests a one-of-a-kind adventure into the culinary traditions of the Inuit in Greenland and Nunavut. You'll savor food made with ingredients direct from the sea and surrounding Arctic land—prepared by local chefs. Enjoy an evening of Inuit storytelling as you dine on traditional dishes of the Inuit of Greenland and Nunavut, including beer-braised muskox served with Greenlandic mashed potatoes, and pickled halibut served with lumpfish dip and bread. Our on-ship Tundra to Table experience is the only exclusively Inuit culinary offering of its kind in the world. This culinary offering has been developed in partnership with Igapall, a not-for-profit collective of chefs who promote Greenlandic food.



Departure Date

Iceland to Greenland: Total Solar Eclipse

ULTRAMARINE

<i>Dates</i>	<i>Days</i>	<i>Start / End</i>	 Sea Kayaking	 Paddling Excursion	 Tundra to Table
ARCTIC 2026					
AUG 6 - 18, 2026	13	Reykjavik	\$	\$	\$

\$ Paid Activities



Inclusions and Exclusions

Inclusions

RATES INCLUDE:

- A pair of special protective eclipse-viewing eye glasses
- Special presentations and keynote address by eclipse experts
- Leadership throughout your voyage by our experienced Expedition Leaders, including shore landings and other activities
- All Zodiac transfers and cruising as per the daily program
- All shore landings as per the daily program
- Shipboard accommodation with daily housekeeping
- All meals, snacks, soft drinks and juices on board throughout your voyage (Please inform us of any dietary requirements as far in advance as possible. Unfortunately, the ships' galleys cannot prepare kosher meals.)
- **NEW** Free beer, standard wines, spirits, and cocktails during bar service hours and dinner
- Complimentary coffee, tea and cocoa available around the clock
- Formal and informal presentations by our Expedition Team and guest speakers as scheduled
- A photographic journal documenting the expedition
- A pair of waterproof expedition boots on loan for landings and Zodiac cruising excursions
- An official Quark Expeditions® parka to keep
- Hair dryer and bathrobes in every cabin
- **NEW** Complimentary Wi-Fi service on one device permitting basic Internet browsing, email, posting on social media and voice applications. (Premium packages are available for more data-intensive applications.)
- All miscellaneous service taxes and port charges throughout the program
- All luggage handling aboard the ship
- Emergency Evacuation insurance for all passengers to a maximum benefit of USD \$500,000 per person
- Greenland voyages cruise passenger tax

Exclusions

RATES SPECIFICALLY DO NOT INCLUDE:

- International airfare
- Arrival and departure transfers in Reykjavik
- Passport and visa expenses
- Government arrival and departure taxes not mentioned above
- Meals ashore unless otherwise specified
- Baggage, cancellation, interruption and medical travel insurance—strongly recommended
- Excess-baggage fees on international and domestic flights
- Mandatory waterproof pants for Zodiac cruising, or any other gear not mentioned
- Laundry, bar and other personal charges unless specified
- Phone charges may vary by location
- Voluntary gratuity at the end of the voyage for shipboard staff and crew
- Additional overnight accommodation
- Adventure Options not listed in Included Activities



Your Expedition Team

Our Expedition Leaders and their teams bring diverse expertise in subjects as varied as polar history, marine biology, glaciology, ornithology and photography. Their knowledge and enthusiasm will greatly enhance your immersion into the polar environment and further deepen your connection to the Arctic.

With over 30 years of experience bringing passengers to remote polar regions and an industry-leading staff-to-guest ratio, we know how to safely handle the unexpected. Ensuring this hard earned experience is passed on, our expedition staff receive comprehensive training in Quark Academy, which provides hands-on polar expedition training prior as part of our onboarding process as well as ongoing training for experienced staff.



Raise a Glass and Stay Connected!

See below for specifics on our complimentary Wi-Fi and bar service, which takes effect November 2024.



Meals on Board

If there is one constant on board, it is that you'll enjoy delicious meals daily. While meal times may change due to landings and wildlife encounters, you'll always be served three well-prepared meals per day. Most dietary restrictions can be accommodated by letting us know prior to your expedition.

Balena Restaurant, the main diningroom on Deck 5 of *Ultramarine*, features tables that accommodate 2 to 10. Guests can enjoy a quiet dinner with a loved one or join a larger table of new friends. Guests will enjoy views from every seat in addition to direct access to the wraparound deck. Guests can also enjoy a meal in Bistro 487, which offers an indoor/outdoor dining experience—perfect for enjoying the polar landscapes.

Breakfasts and lunches are normally served buffet style, while dinners are served plated. À la carte meals are made at the time of your order, allowing our chefs to prepare each dish to your individual needs, ensuring you receive top-quality meals during the course of your expedition.

Complimentary coffee, tea, cocoa and water stations are available around the clock, while soft drinks and juices are available during meals and when the bar is open—all included in the cost of your package.

NEW Enjoy free beer, standard wines, spirits, and cocktails during bar service hours and dinner as part of our new “Raise a Glass and Stay Connected Free” program. Premium wines and champagne are available at extra cost and can be billed to your shipboard account. The well-stocked bars on the ship are open late morning, afternoon and evening, though hours may occasionally change to accommodate the expedition schedule.





Possible Excursions

When traveling in extremely remote regions, your Expedition Team must consider the sea, ice and weather to guide the route and itinerary details. The following sites are a sample of what you may experience on your expedition, whether by ship, Zodiac cruise, or shore landing.

Iceland

THE WESTFJORDS

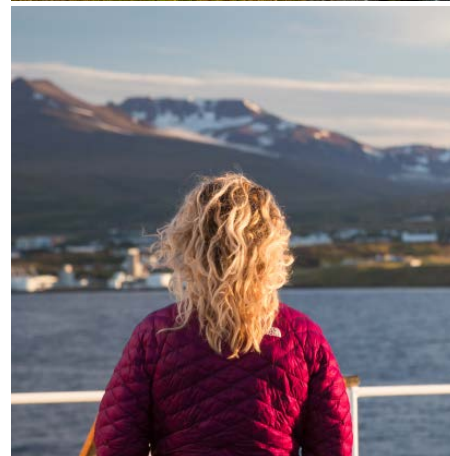
The Westfjords region, in the northwestern part of Iceland, astounds visitors with its dramatic landscapes and unspoiled natural beauty: jagged coastline, abundant fjords, towering cliffs, rocky peninsulas that jut out into the North Atlantic Ocean, and wildlife scenes featuring puffins and seals. The Westfjords is also home to geothermal hot springs, vibrant fishing villages and scenic hiking trails.

ÍSAFJÖRÐUR

Ísafjörður is surrounded by beautiful countryside that's steeped in history. Visitors can get a profound sense of a traditional Icelandic way of life. The laneways of the town are lined with tin-roofed wooden houses that were built by fishing merchants in the 1700s and 1800s. The old hospital, now a cultural center, houses fascinating archives and photographs. Exhibits at the Westfjords Heritage Museum chronicle the town's maritime history, and include a collection of old fishing boats.

VIGUR

Vigur is the second-largest island in the Ísafjarðardjúp fjord in the Westfjords. Located just south of the Arctic Circle, the island measures two kilometers long and only 400 meters wide. Visitors can explore traditional Icelandic farmsteads, photograph puffins, or simply enjoy the tranquility of this small-town oasis next to the choppy waters of the North Atlantic.



ÍSAFJARÐARDJÚP

Ísafjarðardjúp, the name of a large scenic fjord in the Westfjords, translates into “depth of the fjord of sea ice.” The main town of Ísafjörður is a hub for outdoor adventures, including hiking and skiing. It’s an excellent base to explore the fjords of west Iceland.

East/Northeast Greenland

BLOMSTERBUGTEN

Known as the Bay of Flowers, Blomsterbugten boasts a colorful and lush landscape that’s distinct from typical Arctic scenery. Expect spectacular fall colors on a possible hike to Noa Lake.

BOTANIKERBUGT

Situated in King Oscar Fjord, Botanikerbugt is home to a variety of flora—resulting in the nickname Botanist’s Bay. It’s located on the south coast of mountainous Ymer Ø (Ymer Island), in the vast Northeast Greenland National Park.

HOFMANN HALVØ

This peninsula can be a great location for viewing muskoxen. It is also home to wheatears and snow buntings, and you may spot rock ptarmigans or great northern divers (common loons) while exploring the shore. The peninsula is dominated by deep fjords and towering cliffs, which provide nesting habitats for the robust bird population.

BJØRNE ISLANDS (BEAR ISLANDS)

Encounter stunning icebergs at this group of small, rugged islands, which offer stupendous views of Scoresby Sund and Øfjord. If conditions permit a Zodiac landing, our expedition team will plan a relatively short hike to an archeological site.

HOLM BAY AND ELLA Ø (ELLA ISLAND)

Holm Bay is a common landing site on King Oscar Fjord that offers panoramic views of the fjord and surrounding area. Ella Ø (Ella Island) is also located within the fjord, and hence within Northeast Greenland National Park. The legendary Danish navy unit Sirius Sledge Patrol operates here in summer. We may also spot muskoxen.



ITTOQQORTOORMIIT

Approximately 350 people reside in the picturesque northern settlement of Ittoqqortoormiit, which is a welcoming port of call for expedition cruise ships exploring the northeast coast of Greenland in summer. Focal points include the church, and the small, local museum whose historical costumes, tools and pictures tell the story of a sturdy people who have thrived in remote and harsh conditions. Visitors can also visit the surprisingly green football (soccer) field surrounded by rock and snow, and wander between the colorful houses as they soak up the atmosphere of Greenland's most isolated town.

KANGERLUK KONG OSCAR (KING OSCAR FJORD)

Kangerluk Kong Oscar is a major fjord system in Northeast Greenland National Park. Its main fjord stretches 110 kilometers in length and 10 to 25

kilometers wide. The fjord system marks the northern border of the Scoresby Land peninsula. Many visitors remark on the bright sandstone of King Oscar Fjord. When conditions allow, Quark Expeditions' guests can hike in Skipperdal Valley at the western end of Kong Oscar Fjord.

Ø FJORD

Ø Fjord is one of the deepest in Scoresby Sund, and is flanked by towering mountains and dotted with large icebergs. Its name translates into Island Fjord.

VIKINGBUKTA

This fork-shaped bay, with two tidewater glaciers at its heads, is known for stunning icebergs, waterfalls cascading over abrupt cliffs, columnar basalt and volcanic rocks. There are opportunities for excellent tundra walks and Zodiac cruising.

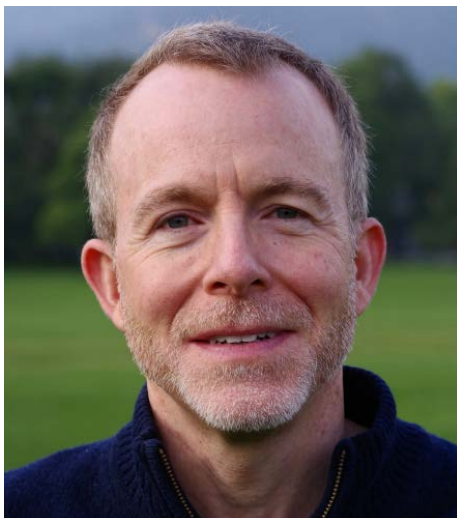
EXPEDITION SPIRIT

Embracing the unexpected is part of the legacy—and excitement—of expedition travel. When traveling in extremely remote regions, your Expedition Team must consider the sea, the ice and the weather to guide the route and itinerary details. This itinerary is a tentative outline of what you'll experience on this voyage; please be aware that no specific itinerary can be guaranteed. By the same token, wildlife encounters as described are expected, but not guaranteed. Your Expedition Team will use their considerable experience to seek out wildlife in known habitats, but the presence of any particular species of bird or marine wildlife is not a guarantee.



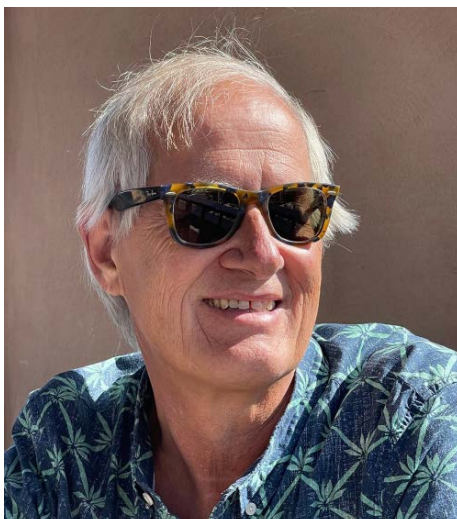


Eclipse Experts



David Baron

Journalist, author and veteran eclipse expert David Baron's career highlights include the role of science correspondent for National Public Radio, as well as health and science editor for the BBC program *The World*, among other positions. He's also the author of the award-winning "American Eclipse: A Nation's Epic Race to Catch the Shadow of the Moon and Win the Glory of the World." His many other accolades include the Lowell Thomas Award from the Overseas Press Club of America, the Alfred I. duPont Award from Columbia University, the National Academies Communications Award, and, on three occasions, the annual journalism prize from the American Association for the Advancement of Science. Baron's work has been published in numerous periodicals, including *The New York Times*, *Los Angeles Times*, *Boston Globe* and *Outside*. An avid eclipse chaser, David has crossed the Americas, Europe, Asia, and Australia to stand in the moon's shadow and witness nature's grandest spectacle: a total eclipse of the sun.



Michael Zeiler

Trained geographer Michael Zeiler, who witnessed his first total eclipse in 1991, was motivated to shift his focus to eclipse cartography while writing his 2009 book, *Modeling Our World*, upon realizing how advanced GIS technology could be applied to publish new, high-precision eclipse maps. After creating his first eclipse map for the total solar eclipse of July 22, 2009, Michael launched the web site eclipse-maps.com in 2010 to showcase new and historic eclipse maps. A few years later, in response to the growing worldwide interest in eclipse-watching, Michael established GreatAmericanEclipse.com in 2014. He also co-authored "Atlas of Solar Eclipses: 2020 to 2045." Zeiler is a member of the International Astronomical Union Working Group on Solar Eclipses and is honored to have the asteroid (53253) Zeiler named after him.

What to pack on your expedition

BY SEA AND AIR

All transfers ship to shore, helicopter flights and Zodiac/ship cruising.

- ☐ Waterproof pants (mandatory for every Zodiac and helicopter ride)
- ☐ Base-layer wool or synthetic top* ☐ Mid-layer warm or fleece bottom*
- ☐ Base-layer wool or synthetic bottom* ☐ Mid-layer warm or fleece top*
- ☐ Warm hat that covers ears (bring an extra)
- ☐ Scarf, buff, or other face protection
- ☐ Warm wool or synthetic socks (keep a dry pair in your bag, and bring extras for layering)
- ☐ Waterproof gloves or mitts (bring an extra, lighter pair for hiking)
- ☐ Glove liners* ☐ Hand and feet warmers* ☐ Binoculars
- ☐ Polarized sunglasses with UV protection (consider bringing an eyewear retainer: string/clip etc.)
- ☐ Sunscreen ☐ Ski goggles (for Zodiac cruising on snowy or windy days)
- ☐ Waterproof, lightweight backpack or dry sack and/or rain sleeve for camera or a waterproof phone case (to keep camera & gear dry)

*recommended layering depending on the conditions of the day and reflecting your personal thermo-regulation comfort levels.

BY LAND (Shore Excursions and Hiking)

In addition to the gear requirements (as above) mandatory for the transit from ship to shore, it is recommended to bring:

- ☐ Worn-in Hiking footwear: While Muck-boots are provided and encouraged for most shore excursions, additional hiking footwear (Goretex-lined boots or similar water-proof hiking boots) can add to your hiking comfort, especially if you are a keen hiker
- ☐ (Smart) Wool or synthetic hiking socks for above footwear (bring an extra pair)
- ☐ Lightweight and quick-dry, trekking pants that may or may not convert to zip-off shorts* (*depending on your thermo-regulation)
- ☐ Breathable waterproof pants* and rain jacket** for outdoor activities in inclement weather (*can be the same pair you use for Zodiac operations / ** can be outer shell of complimentary Quark 3in1 Parka)
- ☐ Comfortable long or short-sleeve shirt for hiking either synthetic/quick-dry or merino (smart) wool
- ☐ (Hiking) gloves (medium thickness, waterproof preferred)
- ☐ Hat, buff or scarf (for wind and weather protection)
- ☐ UV protection (hat, polarized sun glasses, sun block, lip balm)
- ☐ Collapsible walking sticks for hikes (if required)
Quantities are available to borrow on every vessel
- ☐ Additional reusable thermos or water bottle
(in addition to the reusable collapsible water bottle provided)

WHAT TO BRING To make it easier for you, all Quark Expeditions voyages include a Quark parka to keep, and a loan of insulated waterproof boots.

For this trip only: We'll also provide you with a pair eclipse-viewing glasses.

TO WEAR ON BOARD

- ☐ Comfortable casual clothing like lighter shirts, pants or jeans, etc. (in case the ship gets warm)
- ☐ Comfortable non-slip closed-toed, heelless shoes (flip flops, sandals or slip-on shoes should not be worn on board due to safety concerns)
- ☐ Workout attire (for the fitness center and other indoor activities)
- ☐ Swimsuit (for the Polar Plunge! Some vessels may also have a pool, hot tub, sauna and/or steam room. See your ship book for details.)

Just a reminder: No formal evening wear required on our voyages but if you would like to bring something a little more dressy for the Captain's welcome and farewell cocktails you may certainly do so!

ADDITIONAL ITEMS

- ☐ Passport, visas, immunization records, travel documents, etc. as required
- ☐ Camera gear—complete with charger, storage medium, transport & cleaning kit (lens cloth etc.) and extra batteries
- ☐ Waterproof cell phone case or rain sleeve for camera
- ☐ Earplugs and eye masks for sleeping
- ☐ Voltage converters and plug adapters (see ship book for details)
- ☐ Moisturizer for face and hands (skin dryness due to wind and temperature changes)
- ☐ Seasickness, indigestion, headache, or other medications
- ☐ Small amount of local currency (see pre-departure book for more details)
- ☐ Insect repellent ☐ Mosquito netting



Scan this QR code or [click here](#) to watch our video on what to pack before you go!

- To view our packing checklist online, visit: [QuarkExpeditions.com/What-to-Pack/Greenland](https://www.quarkexpeditions.com/What-to-Pack/Greenland)
- Related topics are covered on our Frequently Asked Questions page: [QuarkExpeditions.com/Frequently-Asked-Questions](https://www.quarkexpeditions.com/Frequently-Asked-Questions)

WEATHER CONDITIONS & TEMPERATURES

Polar weather is extremely variable; temperatures may hover around the freezing mark and winds can be strong. The extended daylight warms sheltered areas so that you may sometimes find it warm enough for t-shirts. However, you may encounter rain, snow squalls, fog and white-outs during an expedition and should be ready for any conditions.



The Leader in Polar Adventures

TO BOOK YOUR NEXT ADVENTURE

Contact your Travel Professional
or a Quark Expeditions® Polar Travel Adviser

TOLL FREE AND LOCAL NUMBERS:

North America (Toll Free) 1 888 332 0008

U.K. Tel +44 203 514 2712

U.K. (Toll Free) 0 808 120 2333

Australia Tel +61 2 72580333

Australia (Toll Free) +61 1800 953518

France Tel +33-1 80 14 01 05

France (Toll Free) 08 05 08 66 46

[QuarkExpeditions.com](https://www.QuarkExpeditions.com)

Photos captured with a telephoto lens from a responsible distance, following regulatory/AECO guidelines.

PHOTO CREDITS: (over all Expedition Brochures for the Arctic 2026 season):

Acacia Johnson; David Merron; Nicky Souness; Samantha Crimmin; Sam Edmonds; Michelle Sole;
Cindy Miller Hopkins; Sue Flood; Hugo Perrin; Peter Lindstrom; Visit Greenland; Nicolas Singh;
Rogelio Espinosa; Grange Productions; Fokus Productions; Adobe Stock; iStock

EXPEDITION BROCHURE
October 4, 2024