

ARCTIC 2026

Svalbard Explorer: Best of High Arctic Norway

 **ULTRAMARINE
& OCEAN EXPLORER**



Contents

1	Expedition Overview
2	Itinerary
4	Arrival and Departure Details, and International Flight Planning
6	Your Ship Options
8	Included Activities
9	Adventure Options
10	Departure Dates
11	Inclusions and Exclusions
12	Your Expedition Team
13	Meals on Board
14	Possible Excursions
16	Packing Checklist



Expedition Overview

Svalbard Explorer: Best of High Arctic Norway

Spitsbergen, the largest island in the Svalbard archipelago, is known as the “wildlife capital of the Arctic,” and we’ll show you why on this 11-day voyage. The focus of this expedition is the wildlife, including walrus, reindeer, and that most iconic of Arctic denizens, the polar bear. Explore the unique Arctic landscape, hike the vast and colorful tundra, learn about the history and geology of this remote wilderness, and experience continuous daylight.

This exciting introductory journey through Svalbard available on two ships, each providing a distinct polar experience. *Ultramarine*, our game-changing polar vessel, can take you to remote destinations most larger ships can’t reach. We’ll take advantage of *Ultramarine*’s 20 quick-launching Zodiacs—to create the perfect Arctic experience for you. Your other option is our newest ship, *Ocean Explorer*, purpose built for polar exploration thanks to its advanced expedition technology.

HIGHLIGHTS



Spot iconic Arctic wildlife, such as polar bears, walrus and reindeer



Take advantage of continuous daylight



Hike the tundra and polar desert



Cruise in a Zodiac to explore glaciers, fjords, icebergs and more



Immerse yourself in the icy realm of the Arctic with optional kayaking adventures



Navigate through the ever-changing Arctic ice pack with expert Expedition Leaders



Itinerary

DAY 1 | ARRIVE IN HELSINKI, FINLAND

Your Arctic adventure begins in Helsinki, renowned for its extraordinary architecture and intriguing mix of eastern and western influences. If you arrive early, explore the many museums, galleries and restaurants, relax at a Finnish sauna or wander the vibrant Design District before making your way independently to your group hotel, which is included in the Charter Flight & Hotel Package.

DAY 2 | FLY TO LONGYEARBYEN, SVALBARD & EMBARK

This morning, the group will transfer to the airport and board our private charter flight to Longyearbyen, Spitsbergen's largest settlement. As your ship sets sail, enjoy your first view of the island's rugged, glacier-topped mountains rising majestically from frigid waters.

DAYS 3 - 9 | EXPLORING SPITSBERGEN

Your expedition will cover western Spitsbergen as well as stunning fjords to the north. From polar flora to immense glaciers, the natural landscape here is just as varied as the wildlife.

Each expedition presents new opportunities and different weather and ice conditions. Consequently, there is no fixed itinerary. However, some of the places we may visit include the 14th of July Glacier, Smeerenburg, Alkefjellet and the Hinlopen Strait. The destinations we visit will be selected for optimum wildlife viewing with an appreciation of the history and geology of Spitsbergen.



SVALBARD EXPLORER: Best of High Arctic Norway

Onboard *Ocean Explorer* & *Ultramarine* ———
Flights to/from Helsinki - - - - -

Ice Definitions

FAST ICE

Large solid ice sheets that don't move by wind or currents as they're fastened to the shoreline.

DRIFT ICE

Detached floating ice masses that drift with the wind and ocean currents.

PACK ICE

Pack ice is an expanse of large/medium pieces of floating ice driven together into a nearly continuous mass.

FLOW EDGE

Where the water meets ice that's still fastened to the shoreline, where sea ice meets open water.

ICE FLOE

A large flat, free mass of floating sea ice.

BRASH ICE

Accumulation of floating ice made up of fragments less than 2 meters wide. Wreckage of icebergs, pieces of ice from glacial calving.

The island offers multiple opportunities for wildlife photography. Since most of Svalbard's Arctic ecosystem is uninhabited and well-protected, this remote archipelago is one of the world's best places to spot polar bears against stunning natural backdrops of mountains and ice.

The towering cliffs of Alkefjellet provide homes to thousands of Brünnich's guillemots (thick-billed murre).

Coming across a walrus haul-out is a moment you won't soon forget. Get a chance to witness the intimate gatherings of giant pinnipeds as they haul out together on small coastal strips.

If you're itching to experience a more intimate view from the water, you can book the sea kayaking or paddling excursion adventure options.

In Spitsbergen, there is no shortage of natural beauty. The tundra can be surprisingly colorful in summer, with wildflowers bursting for a taste of

sunshine. Each day, you'll see something interesting, whether it is an ever-changing gallery of spectacular icebergs, a polar bear resting between hunts, or an abandoned historical site from centuries ago.

DAY 10 | DISEMBARK IN LONGYEARBYEN & FLY TO HELSINKI

The time to say goodbye to your Expedition Team and shipmates has come. Your adventure ends as it began, in the historic frontier-style settlement of Longyearbyen. From here, we'll transfer you to the airport for your group charter flight to Helsinki and group hotel, both of which are included in the Charter Flight & Hotel Package.

DAY 11 | ONWARD FLIGHT HOME

After breakfast, you can make your way to the Helsinki International Airport for your onward flight home, or stay to explore Finland's culturally-rich capital on your own if you've made prior arrangements.

EXPEDITION SPIRIT

Embrace the true spirit of Arctic exploration as we take you into the remarkable pack-ice habitat. Where the stark beauty of the Arctic surrounds you. This immersive experience offers a deeper connection to the environment, allowing you to witness firsthand the in-motion frozen terrain that Polar Bears, Ivory Gulls and Bearded Seals call home.

Your expert Expedition Team will use their considerable experience to spot wildlife in this dynamic habitat where the presence of animals is always opportunistic





Arrival and Departure Details, and International Flight Planning

	DAY 1	DAY 2	EXPEDITION DAYS	DISEMBARKATION DAY	FINAL DAY
	<i>International flight in*</i> Arrival and hotel night	Charter flight to embarkation point and embarkation	On ship or landing days	Disembarkation, charter flight and hotel night	Leave hotel <i>International flight onward</i>

* Arrive anytime on Day 1 or earlier. Day 1 includes an optional briefing.
 International flights are not included in the cost of the voyage.

As you prepare for your journey, you may be interested in your arrival and departure details. Since international air transportation is not included in the cost of your expedition, you have some flexibility in planning your flights.

Arrival Day and Embarkation

DAY 1 — ARRIVING AND HOTEL NIGHT IN HELSINKI

You may arrive in Helsinki at any time during Day 1 of the itinerary. Your included accommodation will be at the airport hotel, so arrival transfers are not necessary. On arrival at the hotel, you will receive a welcome letter outlining the departure information for the following day's flight. Please keep in mind that your hotel room may not be ready for check in until 3pm. An agent representing Quark Expeditions® will be available in the lobby of the hotel that evening to answer any questions about the charter flight(s) scheduled for the following morning. Final details and check-in procedures can be found in your final documents.

DAY 2 — CHARTER FLIGHT AND EMBARKATION IN LONGYEARBYEN

After a restful night at your hotel, you will join your flight to Longyearbyen. Upon arrival in Longyearbyen, you will be transferred from the airport to a drop off point and your luggage will be taken directly to the ship. Details of ship transfer times will be provided during your arrival transfer. Due to port logistics, it is possible that you may need to board the vessel by Zodiac, rather than from the pier.

PLEASE NOTE

There is a strict luggage weight limit on checked luggage and cabin baggage on the flights between Helsinki and Longyearbyen. Should you have additional luggage, it can be stored at the hotel in Helsinki. There is NO option to pay for additional luggage.

You will find in your final documents:

- › Luggage weight restrictions on charter flights
- › Hotel information and check in time
- › Charter flight time to embarkation point
- › Embarkation plan
- › Departure charter flight time

Final Day and Departure

DISEMBARKATION IN LONGYEARBYEN AND CHARTER FLIGHT TO HELSINKI

Your voyage is scheduled to end back in Longyearbyen where you will disembark after breakfast. The process takes about an hour and due to port logistics, may involve one last Zodiac ride to the pier. You can spend the day exploring Longyearbyen before being transferred to the airport for your charter flight to Helsinki.

DEPARTING FROM HELSINKI

Arrival times back to Helsinki will not be available until 30 days prior to voyage. Scheduled charter flight times will appear in your final documents, and any additional updates will be communicated on board prior to disembarkation. Upon arrival in Helsinki, you'll be transferred to your included hotel for the night. In the morning, make your way to the airport to catch your flight onward.

PLEASE NOTE

Included Hotel Accommodations:

Your included accommodation begins on Day 1 of your itinerary, and the specific hotel(s) will be indicated in your final voyage confirmation. If you are arriving prior to Day 1 of your expedition or are staying after the disembarkation day and would like to extend your stay, you can book directly with the hotel or through a third party.

Arrival and Departure Transfers

HELSINKI AIRPORT TRANSFERS

Arrival and departure transfers in Helsinki are not included in the expedition. Your first and final nights included accommodation will be provided at the airport hotel, so please make your way to the lobby for check-in when you arrive. The voyage concludes the morning after your included hotel night in Helsinki. If you require a transfer to the airport, you will need to arrange your own transportation. Most airports we travel in and out of have good taxi ranks in the arrivals area, or you can often pre-book a transfer online.





Ultramarine

The technologically advanced *Ultramarine* is built to go beyond the familiar in polar travel and to immerse guests in the best the region has to offer.

With 20 Zodiacs strategically positioned at water level for quick deployment, *Ultramarine* offers the industry's largest portfolio of off-ship adventures. The vessel features the most spacious suites in its category, breathtaking public spaces, exceptional wildlife-viewing areas, superb amenities, and sustainability systems that exceed industry standards.

Ultramarine is designed to deliver unforgettable polar memories.

SHIP SPECIFICATIONS:

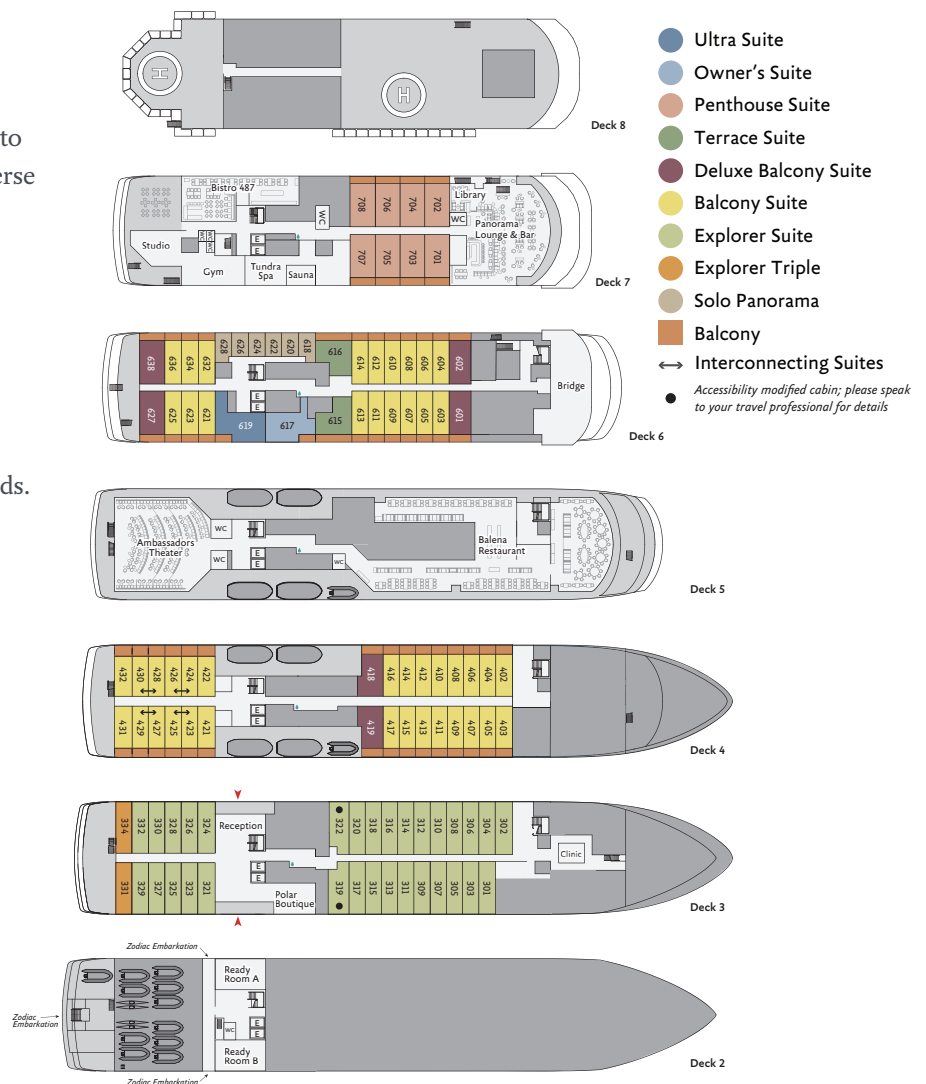
Staff and Crew: 140

Guests: 199

Lifeboats: 4, fully enclosed

Ice Class: PC6

Visit QuarkExpeditions.com to view deck plan details.





Ocean Explorer

Ocean Explorer, the newest addition to our fleet, is modern, elegant and purpose-built for polar exploration. The 138-passenger vessel has been designed with the latest in expedition ship technology. One of the ship's key features is the ULSTEIN X-BOW®, a marine engineering innovation that ensures a comfortable and smooth sailing experience thanks to the inverted bow. Located at the bow is the two-story, light-filled library, which introduces a welcome airiness to the expedition ship. Spacious cabins feature a modern, bespoke Scandinavian design and almost all have verandas. Guests can relax and find comfort in the spacious gym, sauna with large windows, and two outdoor Jacuzzis. *Ocean Explorer* features ample outdoor viewing areas and multi-height outer decks, which are ideal for long-view photography and wildlife viewing. The vessel is equipped with a fleet of 15 Zodiacs that enable guests to get off the ship quickly and safely for off-ship adventures. In addition to the well-appointed and spacious public areas, *Ocean Explorer* has an industry-leading mix of sustainability systems, including fuel-efficient Rolls Royce engines.

SHIP SPECIFICATIONS:

Staff and Crew: 105

Guests: 138

Lifeboats: 2

Ice Class: 1A, PC6

Visit QuarkExpeditions.com to view deck plan details.





Included Activities

All of these activities are included in the price of your trip.

Ready for a little adventure beyond your ship? Each Quark Expeditions® voyage offers a variety of recreational activities to enhance your polar experience.



ZODIAC CRUISING

Zodiacs are the workhorses of polar expeditions, taking you to places the ships can't access, allowing you to reach remote shorelines, explore shallow inlets and spot wildlife. Expedition staff make stepping in and out of them safe and comfortable, and your Zodiac drivers will provide active interpretation, making the landscape come even more alive.



HIKING

Led by experienced staff, exploring on foot is the best way to appreciate the polar landscapes. Our guides are able to accommodate a range of skill levels to suit every guest.



PRESENTATIONS

Enjoy daily chats with and presentations by our world-class onboard polar experts—expedition guides, specialists, photography guides and other special guests who will introduce you to the fascinating history, biology, ornithology, glaciology and geology of the region, and much, much more.



POLAR PLUNGE

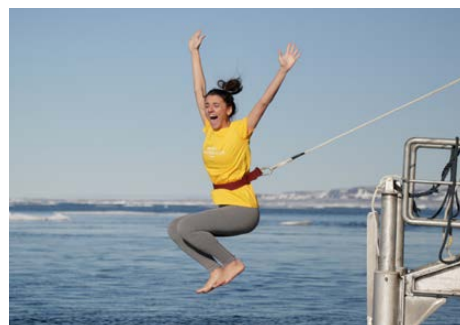
This rite of passage, scheduled only once per expedition, gives you the chance to jump safely into the bracing Arctic waters under the watchful eye of our staff—and just about every single camera on board.



PHOTOGRAPHY

Documenting your voyage so you can take the memories home is a rewarding experience. Our photography guide will help you hone your skills to capture the beauty of the polar regions.

Contact your Polar Travel Adviser or your Travel Professional for more information about your Included Activities and Adventure Options, including the necessary experience, physical requirements and cost.





Adventure Options

All of these activities cost extra and should be booked in advance of your trip.



PLEASE NOTE

Pre-booking is required for all paid activities. We recommend booking early, as spaces fill quickly.

SEA KAYAKING

Imagine gliding across the surface of a bay in the presence of icebergs and glaciers. Our Sea Kayaking program is a great way to intimately explore your surroundings. A small group of kayakers will plan to go out multiple times per voyage as an alternative to shore landings or Zodiac cruises.

The number of opportunities to kayak is weather dependent, and will be conducted only during calm conditions. Prior kayaking experience is required, and you must be able to do a wet exit to participate. Beginners interested in kayaking should consider participating in the Paddling Excursion.

PADDLING EXCURSION



If you're interested in kayaking but would like to try something a bit less demanding than Sea Kayaking, you're the perfect candidate to sign up for a one-time paddle on our stable sit-on-top kayaks—perfect for anyone with minimal or no kayaking experience. Small groups of passengers will be taken out on calm days, with our expert guides always present to provide instruction and help you connect with the polar sea. Two groups of 10 will be pre-booked, and once successfully completed, any subsequent outings will be offered via lottery on board.





Departure Dates

Svalbard Explorer: Best of High Arctic Norway

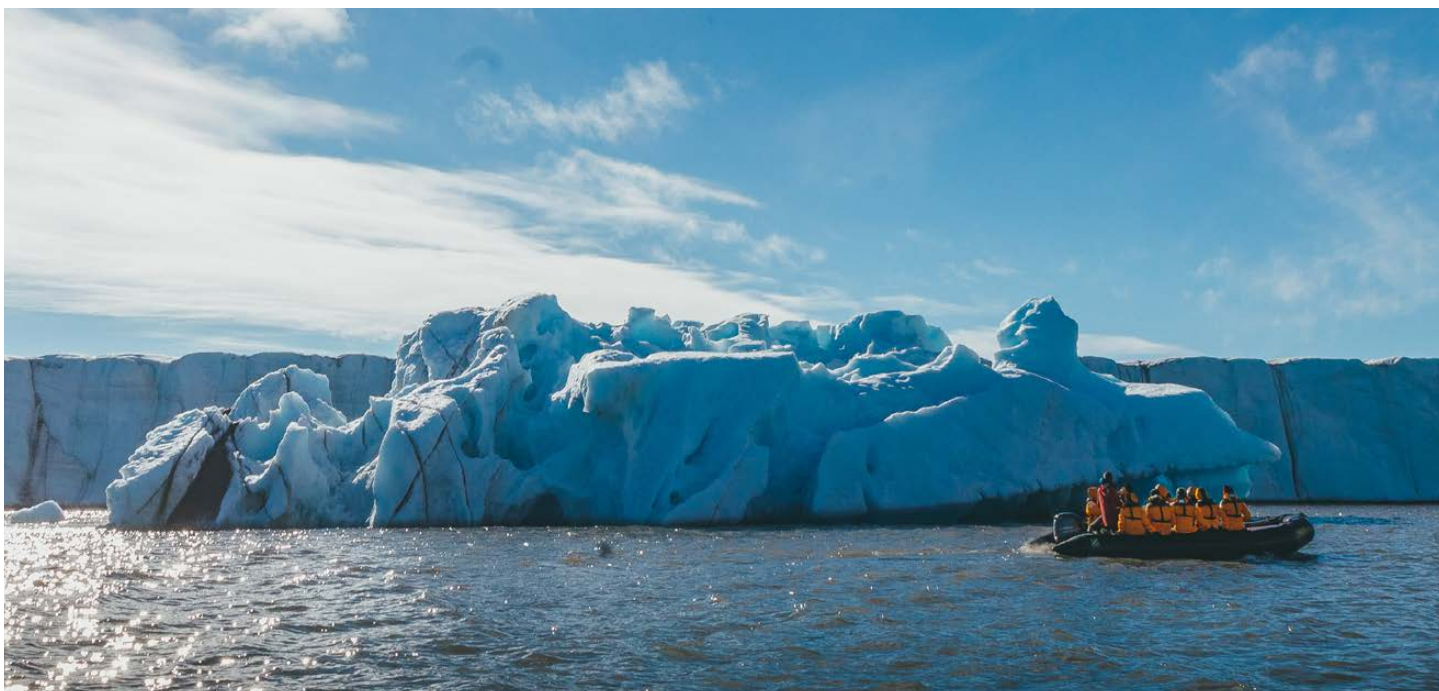
ULTRAMARINE

<i>Dates</i>	<i>Days</i>	<i>Start / End</i>	 Sea Kayaking	 Paddling Excursion
ARCTIC 2026				
MAY 13 - 23, 2026	11	Helsinki	\$	\$
MAY 21 - 31, 2026	11	Helsinki	\$	\$
MAY 29 - JUN 8, 2026	11	Helsinki	\$	\$
JUN 6 - 16, 2026	11	Helsinki	\$	\$
JUN 14 - 24, 2026	11	Helsinki	\$	\$
JUN 22 - JUL 2, 2026	11	Helsinki	\$	\$

OCEAN EXPLORER

<i>Dates</i>	<i>Days</i>	<i>Start / End</i>	 Sea Kayaking	 Paddling Excursion
ARCTIC 2026				
MAY 14 - 24, 2026	11	Helsinki	\$	\$
MAY 22 - JUN 1, 2026	11	Helsinki	\$	\$
JUN 7 - 17, 2026	11	Helsinki	\$	\$
JUN 15 - 25, 2026	11	Helsinki	\$	\$
JUN 23 - JUL 3, 2026	11	Helsinki	\$	\$
JUL 1 - 11, 2026	11	Helsinki	\$	\$

\$ Paid Activities



Inclusions and Exclusions

Inclusions

RATES INCLUDE:

- An official Quark Expeditions® parka to keep
- Leadership throughout your voyage by our experienced Expedition Leaders, including shore landings and other activities
- All Zodiac transfers and cruising as per the daily program
- All shore landings as per the daily program
- Shipboard accommodation with daily housekeeping
- All meals, snacks, soft drinks and juices on board throughout your voyage (Please inform us of any dietary requirements as far in advance as possible. Unfortunately, the ships' galleys cannot prepare kosher meals.)
- Free beer, standard wines, spirits, and cocktails during bar service hours and dinner
- Complimentary select beer, wines and select cocktails during bar service hours and dinner
- Formal and informal presentations by our

- Expedition Team and guest speakers as scheduled
- A photographic journal documenting the expedition
- A pair of waterproof expedition boots on loan for landings and Zodiac cruising excursions
- Hair dryer and bathrobes in every cabin
- Complimentary Wi-Fi service on one device permitting basic Internet browsing, email, posting on social media and voice applications. (Premium packages are available for more data-intensive applications.)
- All miscellaneous service taxes and port charges throughout the program
- All luggage handling aboard the ship
- Transfers between Longyearbyen town center and port on embarkation and disembarkation day

Exclusions

RATES SPECIFICALLY

DO NOT INCLUDE:

- Charter Flight & Hotel Package*
- International airfare
- Arrival and departure transfers in Helsinki
- Passport and visa expenses
- Government arrival and departure taxes not mentioned above
- Meals ashore unless otherwise specified
- Baggage, cancellation, interruption and medical travel insurance—strongly recommended
- Excess-baggage fees on international and domestic flights
- Mandatory waterproof pants for Zodiac cruising, or any other gear not mentioned
- Laundry, bar and other personal charges unless specified
- Phone charges may vary by location
- Voluntary gratuity at the end of the voyage for shipboard staff and crew
- Additional overnight accommodation
- Adventure Options not listed in Included Activities

*CHARTER FLIGHT & HOTEL PACKAGE INCLUDES:

- Pre- and post-expedition hotel nights at Helsinki airport hotel, with breakfast
- Charter flight from Helsinki to Longyearbyen
- Arrival and departure transfers in Longyearbyen
- Charter flight from Longyearbyen to Helsinki



Your Expedition Team

Our Expedition Leaders and their teams bring diverse expertise in subjects as varied as polar history, marine biology, glaciology, ornithology and photography. Their knowledge and enthusiasm will greatly enhance your immersion into the polar environment and further deepen your connection to the Arctic.

With over 30 years of experience bringing passengers to remote polar regions and an industry-leading staff-to-guest ratio, we know how to safely handle the unexpected. Ensuring this hard earned experience is passed on, our expedition staff receive comprehensive training in Quark Academy, which provides hands-on polar expedition training prior as part of our onboarding process as well as ongoing training for experienced staff.



Raise a Glass and Stay Connected

See below for specifics on our complimentary Wi-Fi and bar service.



Meals on Board

If there is one constant on board, it is that you'll enjoy delicious meals daily. While meal times may change due to landings and wildlife sightings, you'll always be served three well-prepared meals per day. Most dietary restrictions can be accommodated by letting us know prior to your expedition.

Breakfasts and lunches are normally served buffet style, while dinners are served plated. À la carte meals are made at the time of your order, allowing our chefs to prepare each dish to your individual needs, ensuring you receive top-quality meals during the course of your expedition.

Complimentary coffee, tea, cocoa and water stations are available around the clock, while soft drinks and juices are available during meals and when the bar is open—all included in the cost of your package.

Enjoy complimentary select beer, wines and select cocktails during bar service hours and dinner as part of our “Raise a Glass and Stay Connected Free” program. Premium wines and champagne are available at extra cost and can be billed to your shipboard account. The well-stocked bars on the ship are open late morning, afternoon and evening, though hours may occasionally change to accommodate the expedition schedule.





Possible Excursions

When traveling in extremely remote regions, your Expedition Team must consider the sea, ice and weather to guide the route and itinerary details. The following sites are a sample of what you may experience on your expedition, whether by ship, Zodiac cruise, or shore landing.

Spitsbergen

ALKEFJELLET

This cliff is a seabird colony, where Brünnich's guillemots (thick-billed murres) raise their young. An estimated 60,000 breeding pairs reside on the basalt cliffs. The birds do not build nests; rather, they lay eggs on the bare ledges of the cliff. Witness the spectacle of thousands of birds flying to and from their cliff edge, speckling the sky and water, like a beehive on a much grander scale.

LILLIEHÖÖK GLACIER

In 2005, nearly 100 years after his great-great-grandfather conducted scientific investigations here, Prince Albert II of Monaco returned to Lilliehöök Glacier to honor his ancestor's memory. Here, you can take a Zodiac cruise amid

labyrinths of sparkling icebergs, and witness breathtaking panoramas of ice. You may even spot bearded seals hauled out on the floes.

LONGYEARBYEN

Home to 2,400 people, the administrative capital of Svalbard is situated on the southern side of Adventfjorden. The settlement was founded in 1905 by John Munroe Longyear, the majority owner of the Arctic Coal Company of Boston. Today as much as ever, this is a true frontier town.

MONACO GLACIER

Prince Albert I of Monaco, a pioneer of oceanography, led an expedition to Svalbard in 1906. His team used sophisticated photographic techniques to understand the shape and position of several glacier fronts. Monaco Glacier honors the expedition, the prince and the principality over which he reigned. While touring the glacier front by Zodiac cruise, listen to the crackle and pop of the brash ice, search for seals and have a chance to admire a natural sculpture gallery.



NORDAUSTLANDET ISLAND

This is the second-largest island in the entire Svalbard archipelago, and home to the polar desert. Featured here is Bråsvellbreen, an ice cap connected to the larger Austfonna, which together form a 112-mile- (180 km) long ice cliff. Bråsvellbreen's glacier face makes for an impressive sight during a Zodiac cruise, stretching all the way to the horizon.

For guests who choose the 12-day voyage: You may, on this longer departure, have additional time to explore northeast Svalbard, as well as sites such as the Arctic desert of Nordaustlandet, which is known for its unique windswept beaches, ice caps and glaciers.

HORNSUND

The most southerly fjord in Svalbard offers some of the most spectacular scenery, with dramatic calving glaciers, drifting pack ice and majestic peaks (the highest of which are often shrouded in mist). A Polish research station has operated on the northern shore of Hornsund since 1957. Part of Sør-Spitsbergen National Park, this pristine area is rich in wildlife—reindeer, Arctic fox and polar bears can be spotted hunting for food, while seals bask on floating ice.

EXPEDITION SPIRIT

Embracing the unexpected is part of the legacy—and excitement—of expedition travel. When traveling in extremely remote regions, your Expedition Team must consider the sea, ice, wildlife, and weather to guide the route and itinerary details. This itinerary is a tentative outline of what you'll experience on this voyage; please be aware that no specific itinerary can be guaranteed. By the same token, wildlife sightings as described are expected, but not guaranteed. Your Expedition Team will use their considerable experience to seek out wildlife in known habitats, but the presence of any particular species of bird or marine wildlife is not guaranteed.



This image was shot with a telephoto lens.

What to pack on your Arctic expedition

BY SEA

All transfers ship to shore and Zodiac/ship cruising.

- ☐ Waterproof pants (mandatory for every Zodiac ride)
- ☐ Base-layer wool or synthetic top*
- ☐ Base-layer wool or synthetic bottom*
- ☐ Mid-layer warm or fleece top*
- ☐ Mid-layer warm or fleece bottom*
- ☐ Warm hat that covers ears (bring an extra)
- ☐ Scarf, buff, or other face protection
- ☐ Warm wool or synthetic socks (keep a dry pair in your bag, and bring extras for layering)
- ☐ Waterproof gloves or mitts (bring an extra, lighter pair for hiking)
- ☐ Glove liners*
- ☐ Hand and feet warmers*
- ☐ Binoculars
- ☐ Polarized sunglasses with UV protection (consider bringing an eyewear retainer: string/clip etc.)
- ☐ Ski goggles (for Zodiac cruising on snowy or windy days)
- ☐ Waterproof, lightweight backpack or dry sack and/or rain sleeve for camera or a waterproof phone case (to keep camera & gear dry)

*recommended layering depending on the conditions of the day and reflecting your personal thermo-regulation comfort levels.

BY LAND (Shore Excursions and Hiking)

In addition to the gear requirements (as above) mandatory for the transit from ship to shore, it is recommended to bring:

- ☐ Hat, buff or scarf (for wind and weather protection)
- ☐ UV protection (sun hat, polarized sun glasses, sun block, lip balm etc.)
- ☐ Collapsible walking sticks for hikes (if required)
Quantities are available to borrow on every vessel
- ☐ Additional reusable (thermos-regulating) water bottle (in addition to the reusable collapsible water bottle provided)

WHAT TO BRING Packing for the Polar Regions doesn't have to be daunting, and to make it easier for you, all Quark Expeditions voyages include a Quark parka to keep, and a loan of insulated waterproof boots. Additional suggested items include:

TO WEAR ON BOARD

- ☐ The complimentary Quark 3-in-1 Parka provided on board is designed with a waterproof shell that can be worn out on deck, and a removable liner that you can wear to stay comfortable indoors)
- ☐ Comfortable casual clothing like lighter shirts, pants or jeans, etc. (in case the ship gets warm)
- ☐ Comfortable non-slip closed-toed, heelless shoes (flip flops, sandals or slip-on shoes should not be worn on board due to safety concerns)
- ☐ Workout attire (for the fitness center and other indoor activities)
- ☐ Swimsuit for the Polar Plunge. Some vessels may also have a pool, hot tub, sauna and/or steam room. See your ship book for details.

Just a reminder: No formal evening wear required on our voyages but if you would like to bring something a little more dressy for the Captain's welcome and farewell cocktails you may certainly do so.

ADDITIONAL ITEMS

- ☐ Passport, visas, immunization records, travel documents, etc. as required
- ☐ Camera gear—complete with charger, storage medium, transport and cleaning kit (lens cloth etc.) and extra batteries
- ☐ Reusable waterproof bags or plastic bags with zippers (to keep small items organized and cameras dry)
- ☐ Voltage converters and plug adapters (see ship book for details)
- ☐ Seasickness, indigestion, headache, or other medications
- ☐ Earplugs and eye masks for sleeping
- ☐ Moisturizer for face and hands (skin dryness due to wind and temperature changes)
- ☐ Credit Card & Small amount of local currency (see pre-departure book for more details)

- › To view our packing checklist online, visit: [QuarkExpeditions.com/What-to-Pack/Arctic](https://www.quarkexpeditions.com/What-to-Pack/Arctic)
- › Related topics are covered on our Frequently Asked Questions page: [QuarkExpeditions.com/Frequently-Asked-Questions](https://www.quarkexpeditions.com/Frequently-Asked-Questions)



Scan this QR code or [click here](#) to watch our video on what to pack before you go.

WEATHER CONDITIONS & TEMPERATURES

Polar weather is extremely variable; temperatures may hover around the freezing mark and winds can be strong. The extended daylight warms sheltered areas so that you may sometimes find it warm enough for t-shirts. However, you may encounter rain, snow squalls, fog and white-outs during an expedition and should be ready for any conditions.



Polar-Obsessed Since 1991

TO BOOK YOUR NEXT ADVENTURE

Contact your Travel Professional
or a Quark Expeditions® Polar Travel Adviser

TOLL FREE AND LOCAL NUMBERS:

North America (Toll Free) **1 888 332 0008**

U.K. Tel **+44 203 514 2712**

U.K. (Toll Free) **0 808 120 2333**

Australia Tel **+61 2 72580333**

Australia (Toll Free) **+61 1800 953518**

France Tel **+33-1 80 14 01 05**

France (Toll Free) **08 05 08 66 46**

QuarkExpeditions.com

Photos captured with a telephoto lens from a responsible distance, following regulatory/AECO guidelines.

PHOTO CREDITS: (over all Expedition Brochures for the Arctic 2026 season):

Acacia Johnson; David Merron; Nicky Souness; Samantha Crimmin; Sam Edmonds; Michelle Sole; Cindy Miller Hopkins; Sue Flood; Hugo Perrin; Peter Lindstrom; Visit Greenland; Nicolas Singh; Rogelio Espinosa; Grange Productions; Fokus Productions; Adobe Stock; iStock

EXPEDITION BROCHURE
May 28, 2025

