

ANTARCTIC 2025/2026

# Snow Hill to the Peninsula

---

Shackleton's Emperors



**ULTRAMARINE**

DESIGNED TO GO BEYOND

# Contents

- 1 Overview
- 2 Itinerary
- 7 Nature Photographer Paul Goldstein
- 8 Arrival and Departure Details,  
and International Flight Planning
- 10 Your Ship: *Ultramarine*
- 21 Included Activities
- 14 Adventure Options
- 15 Departure Dates
- 16 Inclusions and Exclusions
- 17 Your Expedition Team
- 18 Extend Your Trip
- 19 Meals on Board
- 20 Possible Excursions
- 22 Packing Checklist



# Overview

Snow Hill to the Peninsula: Shackleton's Emperors

We created our 18-day “Snow Hill to the Peninsula: Shackleton’s Emperors” itinerary for those who dream of witnessing the legendary Emperor penguin colony at Snow Hill Island—and are also drawn to the austere beauty of the remote Weddell Sea, as well as the rarely visited east coast of the Antarctic Peninsula.

The crown jewel of this unique expedition, of course, is the rare opportunity to visit the storied colony of approximately 4,000 pairs of breeding Emperor penguins and their adorable chicks at Snow Hill. These ice-dwelling penguins—which captivated early explorers like Sir Ernest Shackleton—thrive in temperatures as low as -50C. They’re the largest and most beautiful of all penguin species. On this expedition, you will spend five days exploring this iceberg-choked paradise by ship, helicopter and Zodiac before exploring along the east coast of the Peninsula.

This is the only itinerary in the polar industry that enables guests to spend this amount of time totally immersed in the spell-binding wonders of the eastern coast—vast stretches of which resemble the planet Mars.

A special feature of this voyage: we’ll be joined by Paul Goldstein, winner of the Black & White category in the 2024 Nature Photographer of the Year Awards, who has shared his passion for polar photography on 30 expeditions to the Antarctic and Arctic. Goldstein, who first explored the Weddell Sea in 2005, considers his two previous Emperor expeditions to be among the top highlights of his 40 years of travel (see his biography, page 7). Guests will have hands-on opportunities to hone their wildlife photography skills throughout the voyage.

You will sail on the technologically-advanced *Ultramarine*—the same ship that brought our guests to Snow Hill on two separate voyages in 2023. *Ultramarine*’s two helicopters will enable you to explore in ways no one else can. And, with a maximum of 150 guests, you can expect an intimate on-ship experience.

Prepare to be captivated—just as Shackleton and his companions Worsley, Crean and Wild were a century ago—by the sight of Emperors as they scale the cobalt-blue icebergs before plunging into the depths of the Weddell Sea in their relentless hunt for food.

## EXPEDITION IN BRIEF



Embrace the expeditionary spirit on a quest to reach the legendary 8,000-fold Emperor penguin colony at Snow Hill



Learn from award-winning nature photographer Paul Goldstein



Explore the rarely visited east side of the Antarctic Peninsula



Travel safely and comfortably aboard our ice-strengthened *Ultramarine*



Enjoy helicopter flightseeing and Zodiac cruising for unique perspectives of Antarctica



Witness abundant wildlife, such as penguins, seals and whales



Immerse yourself in the icy realm of the Antarctic during an optional paddling excursion.



# Itinerary

## DAY 1 | ARRIVE IN BUENOS AIRES

Upon arrival in the vibrant Argentine capital, known for its European-style architecture, rich culture and lively neighborhoods, you will independently transfer to your included hotel.

## DAY 2 | FLY TO USHUAIA AND EMBARK

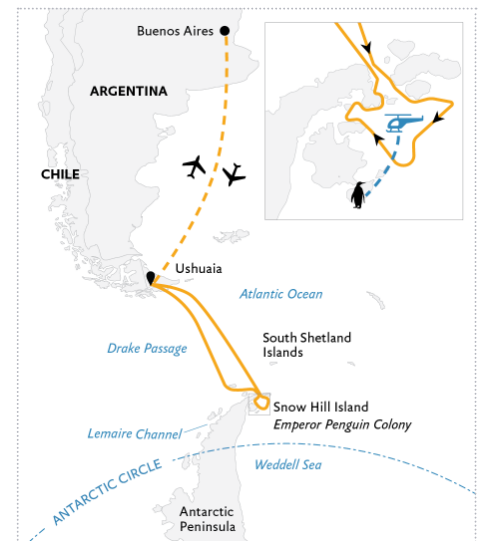
After a complimentary early breakfast at the hotel, your group will transfer to the airport to board our private charter flight to Ushuaia, at the southern tip of Argentina. Upon arrival, you will be transferred from the airport to a central downtown location to explore quaint Ushuaia on your own before making your way to the pier. After a late afternoon embarkation, you will sail along the historic Beagle Channel, which transects the Tierra del Fuego archipelago in the extreme southern part of South America. Embrace the air of anticipation as you depart—the next land you see will be the Antarctic.

## DAYS 3 AND 4 | CROSSING THE DRAKE PASSAGE

The storied Drake Passage, the 800-kilometer waterway between the southern tip of South America and Antarctica, is an adventure unto itself. Its position at the confluence of the Pacific, the Atlantic and the Southern oceans can mean either a turbulent or calm passing. While under the attentive care of our expert staff and expedition team, you'll have plenty of time to gaze out at the expansive ocean waters, photograph seabirds as they swoop down around the ship, and get to know your Expedition Team and fellow travelers.

## DAY 5 | NAVIGATING INTO THE WEDDELL SEA

Today, we begin our passage through Antarctic Sound. This stretch of water separates the northern tip of the peninsula from the Weddell Sea. It's notorious for being filled with massive ice chunks which originate from the



### SNOW HILL TO THE PENINSULA: Shackleton's Emperors

- Onboard *Ultramarine*
- - - Flights to/from Buenos Aires
- Approximate ship drifting position
- 🐧 Emperor Penguin Colony

Filchner-Ronne Ice Shelf—so have your cameras and binoculars ready. The onboard team will teach you everything about ice, as the Weddell Sea boasts the world's most impressive floes and tabular icebergs. The captivating flat-topped icebergs on this eastern side of the Peninsula are known to be exponentially bigger and more visually impressive than those observed off the western coast.

Daily presentations by or polar experts will enrich your expedition experience. You'll hear what it was like a century ago for the brave polar heroes who embraced the unknown. Expect a fascinating deep-dive into the world of ice-dwelling Emperor penguins.

#### **DAYS 6 TO 10 | QUEST TO LAND AT SNOW HILL ISLAND: EMPEROR PENGUIN COLONY**

The journey toward Snow Hill Island will put you in explorer mode as the captain and Expedition Leader keep you updated through weather briefings, as well as meteorological and sea ice condition reports. The thickness of ice will determine how close *Ultramarine* can get to Snow Hill Island, at which point the ship's

twin-engine helicopters will take over. Like summitting a mountain from base camp, parties set out from *Ultramarine* towards the Emperor penguin colony. As experienced by all of our guests who visited Snow Hill Island with us in November 2023, the adventure begins with an extended helicopter transfer that will reveal a landscape of snow-capped peaks and apartment-building-sized tabular icebergs. As seasoned polar explorers can attest, these mammoth, flat-topped icebergs will captivate you with their majesty.

The colony itself is located on the sea ice off the south coast of Snow Hill Island, and we will land as close to the penguins as possible—yet at a safe distance to avoid disturbing the birds. Upon landing, your party will walk across the ice to the fabled Emperor penguin colony. Your auditory senses will be on high alert: the non-stop Antarctic wind, the crunch of the ice beneath your feet, and, of course, the chatter of thousands of Emperor penguins.

On your guided walk to the colony, you may be surprised to find yourself walking

next to paths in the snow carved by penguins that waddled by before you. As with all of our off-ship excursions, native wildlife and their habitat always take priority. We do everything possible to minimize any disturbance to their environment. The singular sounds of the flightless birds get louder as we march toward one of the rarest wildlife scenarios on the planet: the colony of 8,000 rarely seen Emperor penguins. Our plan is to ensure that every guest visits the remote colony during the voyage, the possibility of an additional visit will be dependent on conditions. The Expedition Team and special experts will stay close so they can answer your questions and help you take it all in. You'll observe how the Emperors behave as a tightknit community, how they care for their young—with male and female adults sharing parental duties—and how they body surf across the ice in a way that can only be described as quirky yet efficient.

Each day our polar experts, who include penguin scientists, glaciologists, biologists and polar historians, will present on various aspects of Emperor penguins and their behaviors, ice



formations such as the breathtaking tabular, and the experiences of polar explorers who braved the Weddell Sea over a century ago. Or you may, on one of the days, decide to take the polar plunge, or test your balance on a stand-up paddleboard. Or pamper yourself at *Ultramarine's* Tundra Spa, the sauna with floor-to-ceiling windows, fitness room, or yoga space.

However you spend your time immediately following your visit to the legendary colony, we urge you to take some time to reflect on everything you've witnessed, and appreciate that you are one of the few humans to have experienced the rare wildlife spectacle at Snow Hill.

#### **DAYS 11 TO 15 | THE RARELY VISITED EASTERN COAST OF THE PENINSULA**

The next stage of our specialized itinerary focuses on the rarely visited east side of the Antarctic Peninsula—where few operators visit. We will spend time each day in stunning locations that allow us to enjoy off-ship opportunities shaped by the weather. Our ultimate goal is to maximize your experience of Antarctic wildlife, ice and landscapes.

Our time exploring the Antarctic Peninsula will showcase the flexibility and technical prowess of our industry-leading expedition team, pilots and crew. They will look for opportunities to experience Antarctica beyond the coast and over the expansive glacial terrain of the last great wilderness. Much of this will be achieved on helicopter flightseeing excursions, which are included in your trip. These heli-flightseeing experiences differ from the helicopter ride that transported you between the ship and the Emperor penguin colony at Snow Hill Island. Helicopter flightseeing enables you to soar freely among the icy peaks of Antarctica while looking out over vast expanses of ice, rock, coast and sea.

Within the eastern Antarctic Peninsula, Antarctic Sound, Erebus and Terror Gulf, and the northwestern Weddell Sea are the main theater for this venture. As we sail through Antarctic Sound, pausing to view stunning fields of tabular icebergs, we'll set our sights on visiting Paulet Island, located in the Weddell Sea. This small, circular island is home to a large Adelie penguin colony. The iconic cone rising up 353 meters (1,158 feet) is a reminder that Paulet Island was once home to active volcanoes.

In addition to penguins, you may be interested in visiting the historic hut built by members of the Swedish Antarctic Expedition of 1901-04. Shackleton was aware of this hut—and of the provisions stored there. When he and his crew were forced to abandon the *Endurance*, Shackleton's objective became clear: to reach the safety, shelter and supplies at Paulet Island. Alas, as history attests, the ice and current of the Weddell Sea had other plans.

We will visit two towering geological features: Madder Cliffs on Joinville Island, and Brown Bluff on the most northerly tip of the Antarctic continent where we plan to set foot. Brown Bluff is believed to be an exposed volcano that once erupted beneath the glacial ice, causing the lava to spread laterally and create the stunning geological layering that's visible on the imposing 745-metre bluff walls. The base of the bluffs is home to rookeries of both Adelie and gentoo penguins, which number in the thousands.

During our standard excursion days, we aim to offer a variety of off-ship experiences tailored to the location and weather. These include Zodiac



*Credit: Paul Goldstein*



*Credit: Paul Goldstein*

cruises, shore landings on islands and the continent, as well as our paddling programs.

Also featured in this portion of the itinerary: the James Ross Island archipelago, adjacent to Erebus and Terror Gulf, which is highly valued geologically. On these islands we'll find fossilized specimens, ventifacts (ancient rocks polished smooth over time by wind and grains of sand), and the remains of the KT Boundary, which marks the transition between the Cretaceous Period (dinosaurs and reptiles) and the Tertiary Period (mammals). Our goal is to provide opportunities for guests to see ventifacts up close, and to better appreciate the significance of wind erosion—by sand or ice particles—over long periods. Ventifacts provide valuable information about the climatic history and prevailing wind patterns of the region.

A highlight of the eastern side of the peninsula is Devil Island, marked by its twin towering cones of ash and hardened lava that emerge from a bay on the north shore of Vega Island. At low tide, grounded bergy bits and

sea ice reveal the extraordinary visual formations on the underside of the ice—shapes uniquely sculpted by brine channels and ocean waves.

Before returning back across the Drake Passage, we intend to visit the wildlife-rich South Shetland Islands. As with any polar expedition, our team has devised multiple plans for our visit to this region. Our ultimate goal, however, is to set foot on Livingston Island, which showcases the most spectacular mountains of the South Shetland Islands, as well as the chinstrap penguin colonies along the rugged coast. The towering peaks you'll see are the Tangra Mountains (stretching 32 kilometers long by 8.5 kilometers wide), Mount Friesland (rising to a height of 1,700 meters/5,578 feet), Bowles Ridge (822 meters/2,697 feet), and Pliska Ridge (667 meters/2,188 feet).

One other fascinating landing option is Deception Island. In addition to waddling penguins and lounging seals, visitors can also see the rusting remnants of long-abandoned whaling operations on the beach. We hope to offer guests longer walks leading to breathtaking viewpoints on Deception Island. The

stark contrast between the snow and dark volcanic sand—with geothermic steam along the shoreline—creates a uniquely atmospheric feel. Additionally, Deception Island is home to one of the most renowned chinstrap penguin colonies in the world. Estimates range from 50,000 to 70,000.

### EXPEDITION SPIRIT

Embracing the unexpected is part of the legacy—and excitement—of expedition travel. Throughout the voyage your Expedition Team must consider the sea, ice and weather to guide the route and itinerary details. This itinerary is a proposed outline of what you may experience on this voyage; please be aware that no specific itinerary can be guaranteed. Your visit to the remote Emperor penguin colony at Snow Hill as described is expected, but not guaranteed. Your Expedition Team will use their considerable experience in Antarctica to ensure you witness various wildlife species and ice formations on route to Snow Hill Island.



*Credit: Paul Goldstein*



*Credit: Paul Goldstein*



## DAYS 16 AND 17 | AT SEA: SAILING NORTH ACROSS THE DRAKE PASSAGE

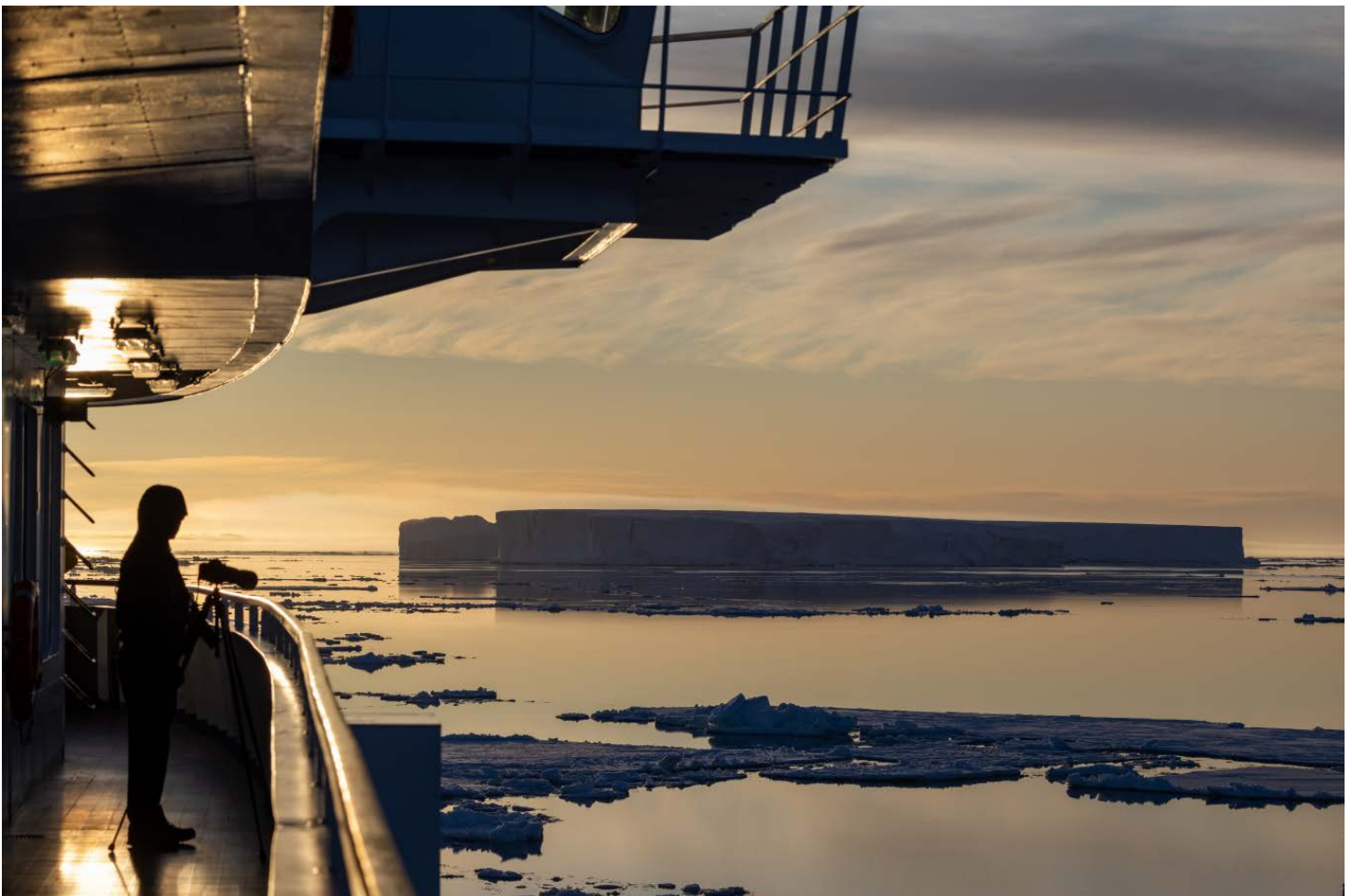
The journey back across the Drake Passage provides a final opportunity to enjoy the invigorating Southern Ocean air. Spend time on deck watching for seabirds and scouting for whales, enjoy presentations by your Expedition Team, and celebrate the experiences you've shared off the beaten track in remote Antarctica.

## DAYS 18 | DISEMBARK IN USHUAIA AND FLIGHT TO BUENOS AIRES

You will arrive in Ushuaia in the morning and disembark after breakfast. The mandatory transfer package includes a tour of Tierra del Fuego National Park for a taste of Patagonia, after which you'll transfer to the airport for the return group charter flight to Buenos Aires.

## *Ultramarine* was built for this type of expedition

- › This voyage leverages the best elements of *Ultramarine's* unique design and extraordinary expedition-focused features.
- › Our best-in-class H145 twin-engine helicopters are utilized for their added range and passenger capacity, allowing us to shuttle guests to the landing area in a short period of time. Our helicopters are equipped with noise-reduction technology that minimizes impact on wildlife.
- › *Ultramarine's* 1A+ PC6 ice class allows her to safely and confidently navigate several kinds of Antarctic waters and ice conditions, allowing the ship to venture further into remote regions of the Antarctic.
- › The water-level Zodiac hangars enable quick-deploy Zodiac cruising, allowing us to enrich the guest experience and make the most of our time in the Weddell Sea.







# Nature Photographer Paul Goldstein

Award-winning photographer, seasoned wilderness guide, and unabashedly vocal conservationist Paul Goldstein was first seduced by the Weddell Sea in 2005. He instantly became smitten with what he calls “the ice-choked paradise of Antarctica.” Goldstein, winner of the 2024 Nature Photographer of the Year (B&W category), has shared his camera skills with nature aficionados on 30 photography-focused expeditions to the Antarctic and Arctic over the last two decades. He considers his two previous Emperor expeditions to be among the top highlights of his 40 years of global travel.

“Witnessing the intricately sculpted bergs of the Eastern Peninsula—often adorned with intrepid chinstraps and Adélies—is close to polar nirvana,” says Goldstein. “However, seeing the Emperors on pristine ice is another level.”

Based on years of photographing every natural wonder in the Weddell Sea—from thousand-fold rookeries of Emperor penguins to massive, tabular icebergs—Goldstein believes the capricious nature of weather in this fertile southern stronghold requires visitors to make the most of every waking hour. “Early-season November sees the ice at its most alluring,” says Goldstein, “Even if your lens of choice is only a smart phone, you can still expect to return home with a few wilderness images to put on your wall. This part of Antarctica is preposterously photogenic.”

**Goldstein will share photography tips throughout the expedition. Hands-on opportunities will address:**

- › Composition and light: how to make the most of various lighting and weather situations
- › Camera settings
- › Informal image critiques.



# Arrival and Departure Details, and International Flight Planning



As you prepare for your journey, you may be interested in your arrival and departure details. Since international air transportation is not included in the cost of your expedition, you have some flexibility in planning your flights.

## Arrival Day and Embarkation

### DAY 1 — ARRIVING IN BUENOS AIRES AND HOTEL NIGHT

Upon arrival in Buenos Aires, you will make your way to the included group hotel. A presentation room will be open from 12 pm to 8 pm for luggage weighing and tagging. A Quark Expeditions representative will be available to answer your questions and give information about the next day's flight and ship embarkation. After an early breakfast the following morning, your group will transfer to the airport and board our private charter flight to Ushuaia, Argentina, the southernmost city in the world.

### DAY 2 — USHUAIA AND EMBARKATION

In Ushuaia your mandatory transfer package will provide some free time to explore this quaint port town, and also (when flight schedules allow) a tour of Tierra del Fuego National Park. Note: The tour (if available) may take place on either the embarkation or disembarkation day.

We will transfer the group to the ship for embarkation around 4 pm.

### PLEASE NOTE

Luggage will be limited to one checked luggage and one cabin baggage on the flights between Buenos Aires and Ushuaia. Luggage weight restrictions will be confirmed in your final documents received 30 days prior to your trip. Should you have additional luggage, it can be stored at the hotel in Buenos Aires. There is NO option to pay for additional luggage.



# Final Day and Departure

## DISEMBARKATION IN USHUAIA

The ship is scheduled to arrive back at the pier in Ushuaia between 7 am and 8 am. After breakfast you will bid farewell to your Expedition Team before completing your disembarkation. This process takes approximately one hour. As mentioned above, our tour of Tierra del Fuego National Park may take place today—or on embarkation day at the start of your trip.

## DEPARTING FROM BUENOS AIRES

Upon arrival in Buenos Aires, you may be able to connect directly with your homeward flight, as we will land at Ministro Pistarini International Airport (also known as Ezeiza International Airport, EZE) at 5 pm. Please allow a minimum of three hours between our charter arrival and your international departure. We recommend four hours.

If your plans will take you onward in South America, please check your flight schedule to confirm your connection before booking. Upon arrival in Buenos Aires, you may need to transfer from the international airport (EZE) to the domestic airport, Jorge Newbery (also known as Aeroparque, AEP), which is located about a one-hour drive away under normal traffic conditions. If you must transfer between airports on the final day of the voyage, you can choose to use the efficient airport shuttle service, Manuel Tienda León, or take a *remis* (a pre-paid taxi booked inside the airport). If you prefer, your Polar Travel Adviser can also arrange for a private transfer. As traffic can add time to the commute, we recommend that you allow at least five hours between flights arriving and departing from the different airports in Buenos Aires to allow for transit, check-in, and security clearance.

For the absolute safest travel plans, we recommend that you book an extra hotel night in Buenos Aires between flights.

# Arrival and Departure Transfers

## BUENOS AIRES AIRPORT TRANSFERS

Arrival transfers from your international flights in Buenos Aires are not included; however, your Travel Professional or Polar Travel Adviser can arrange them for you.

*We request that you provide your flight details to Quark Expeditions at least 30 days prior to traveling.*

## PLEASE NOTE

### Included Hotel Accommodations:

Your included accommodation begins on Day 1 of your itinerary. The specific hotel will be indicated on your final voyage confirmation. If you are arriving prior to Day 1 of your expedition or are staying after the disembarkation day and would like help booking a pre- or post-stay, please contact your preferred travel agent or Quark Expeditions for hotel options. As accommodation space is limited, you are encouraged to request any extra nights as early as possible.

Weather conditions may occasionally delay our arrival, and airline schedule changes have also been known to occur in Argentina. Booking flexible tickets is always encouraged, as we cannot be held responsible for delays due to unforeseen circumstances.





# Your Ship

## ULTRAMARINE

The technologically-advanced *Ultramarine* is designed to go beyond the familiar in polar exploration, to immerse guests in parts of the Polar Regions where few humans have ever set foot.

Equipped with two twin-engine helicopters and 20 quick-launching Zodiacs, *Ultramarine* offers the most off-ship adventure activities in the industry. Guests can enjoy two restaurants (Balena and Bistro 487), Tundra Spa, a sauna-with floor-to-ceiling windows, spacious suites and abundant wildlife-viewing spaces. *Ultramarine* also features advanced sustainability systems—which exceed all industry standards.

*Ultramarine* is perfectly designed to deliver the ultimate polar expedition experience.

### SHIP SPECIFICATIONS:

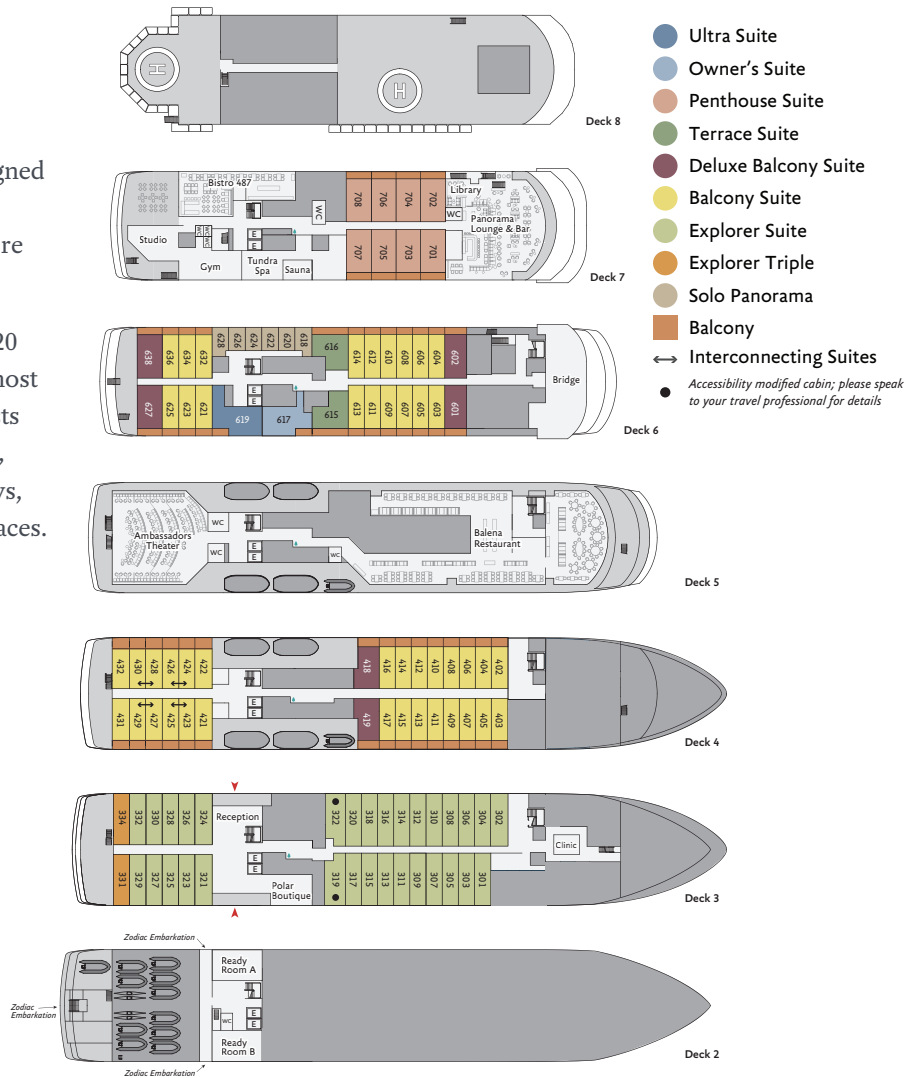
Staff and Crew: 140

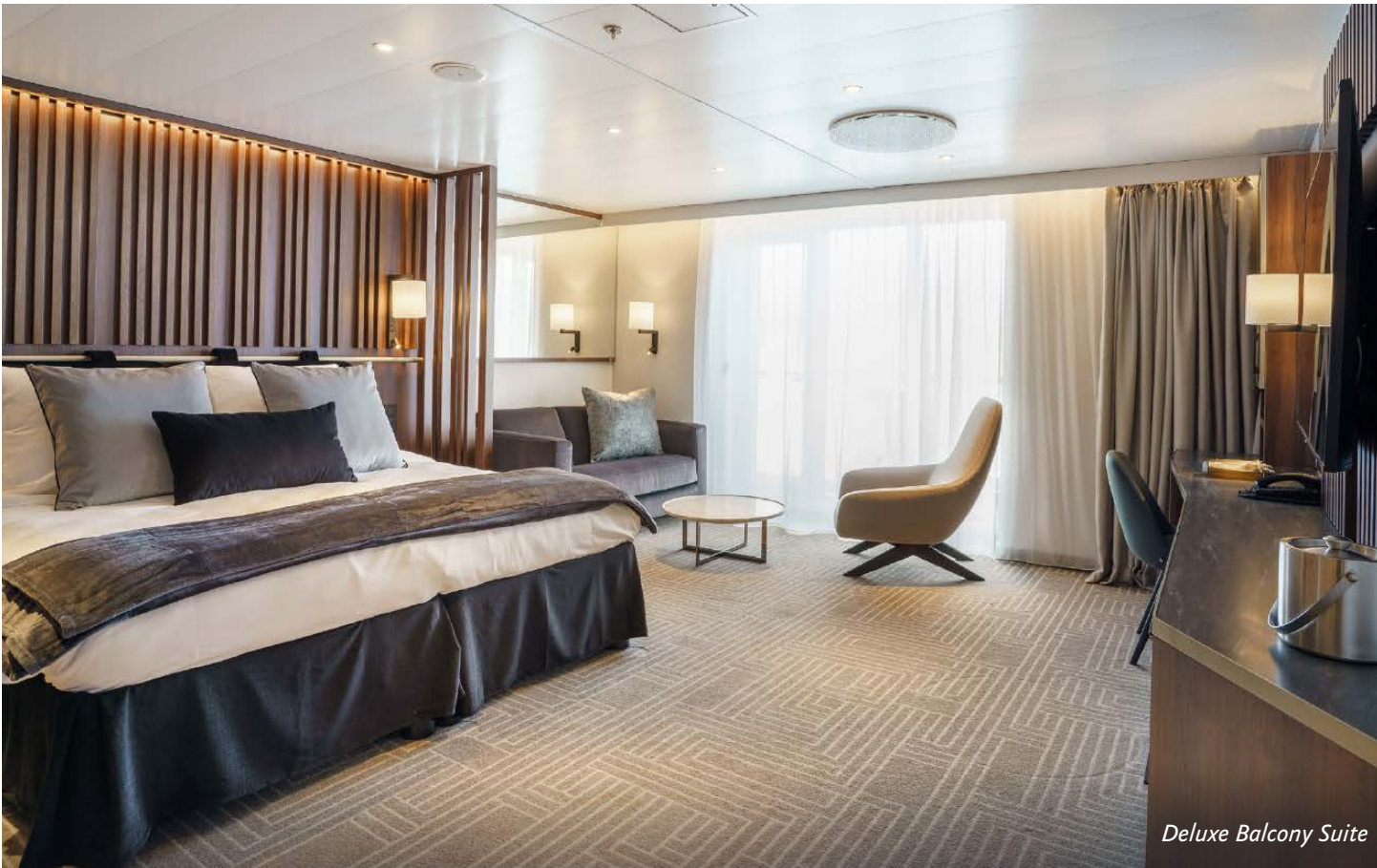
Guests: 199

Lifeboats: 4, fully enclosed

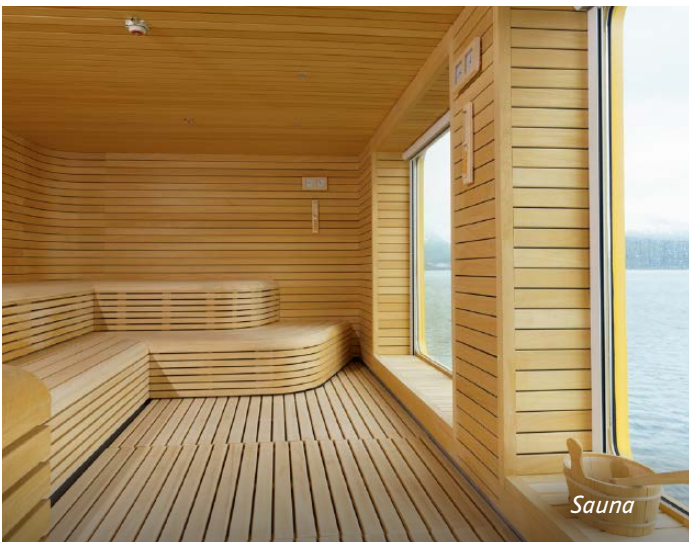
Ice Class: PC6

Visit [QuarkExpeditions.com](http://QuarkExpeditions.com) to view deck plan details.





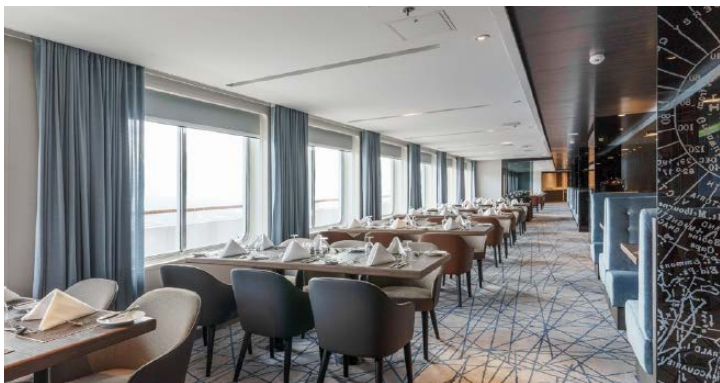
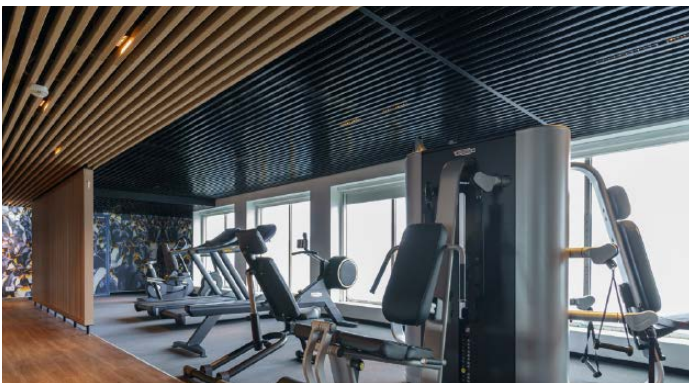
*Deluxe Balcony Suite*

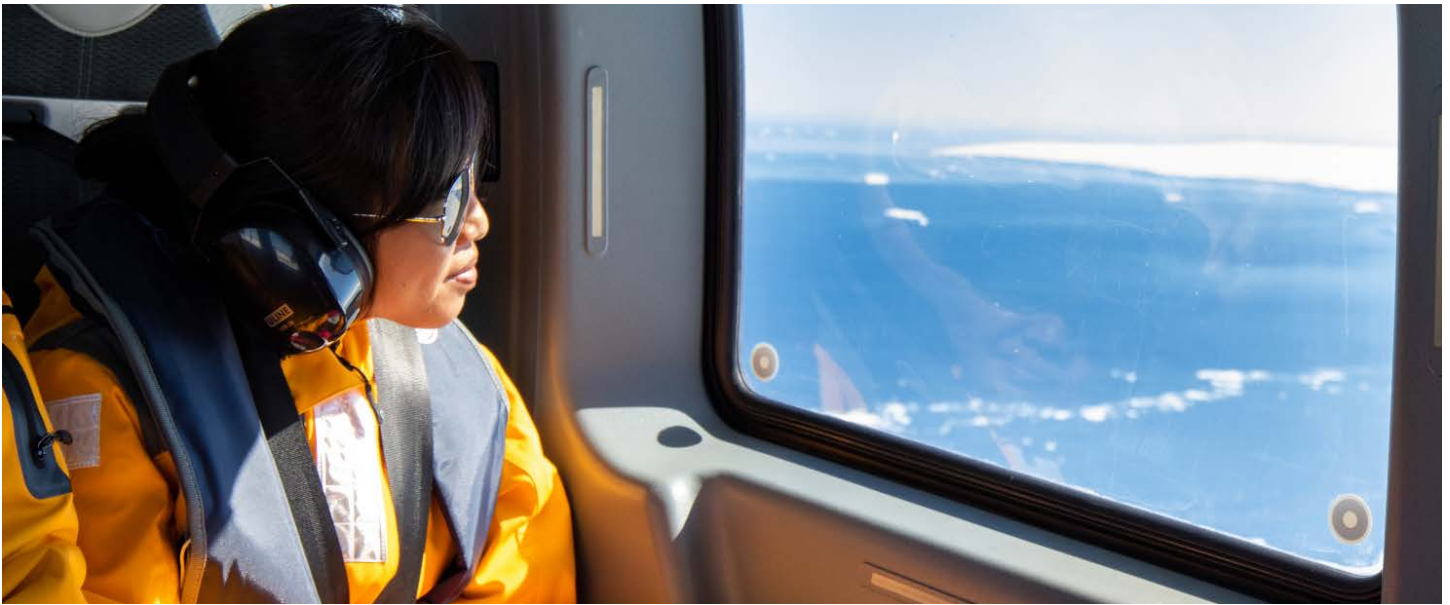


*Sauna*



*Panorama Lounge*





# Included Activities

These are included in your trip package.

Ready for a little adventure beyond your ship? Each Quark Expeditions® voyage offers a variety of recreational activities to enhance your polar experience. In addition to the below included activities, helicopter flights to and from the penguin colony are included.

## FLIGHTSEEING

While polar landscapes are spectacular from the sea, they are even more striking from the air. On board *Ultramarine* you will experience remarkable aerial perspectives on a 10- to 15-minute flightseeing excursion included in the cost of your voyage.

## MASTERING NATURE PHOTGRAPHY

Award-winning nature photographer Paul Goldstein will share tips throughout the expedition. Hands-on learning opportunities will cover composition and light, camera settings, as well as informal image critiques.

## PHOTOGRAPHY

Documenting your voyage so you can take the memories home is a rewarding experience. Our photography guide will help you hone your skills to capture the beauty of the polar regions.

## PRESENTATIONS

Enjoy daily chats with and presentations by our world-class onboard polar experts—expedition guides, specialists, photography guides and other special guests who will introduce you to the fascinating history, biology, ornithology, glaciology and geology of the region, and much, much more.

## HIKING

Hiking in Antarctica is free-form and supervised by our expert staff, who set out a perimeter or paths at each landing site within which you are free to explore. While you hike, staff will be available to enhance your experience by answering questions about the wildlife, history and geography of the area.

“ The heli-flightseeing was so exciting. Seeing Snow Hill Island from above, seeing the Emperor penguin colony amongst the snow that seemed never-ending. Truly out of this world. The on-ship presentations were engaging and educational. It was so interesting to learn more the penguins, the icebergs, the history.”

— CHARLY M., SNOW HILL, 2023



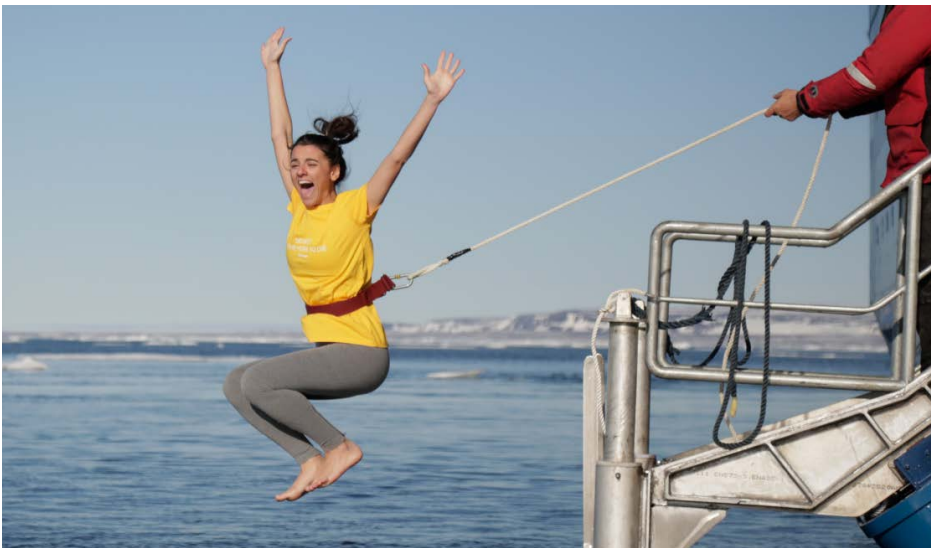


### ZODIAC CRUISING

Zodiacs—rugged inflatable watercraft—are the workhorses of polar expeditions, taking you to places the ships can't access, allowing you to reach remote shorelines, explore shallow inlets and search for unique wildlife. Expedition staff make stepping in and out of them safe and comfortable, and your Zodiac drivers will provide active interpretation, making the landscape come even more alive.

### POLAR PLUNGE

This rite of passage, scheduled only once per expedition, gives you the chance to jump safely into the bracing Antarctic waters under the watchful eye of our staff—and just about every single camera on board.



More information about your Included Activities and Adventure Options, including the necessary experience and physical requirements is available by contacting your Polar Travel Adviser or travel professional.



# Adventure Options

These activities cost extra and must be booked in advance of your trip.



## PLEASE NOTE

Pre-booking is required for all paid activities as there's no guarantee of available spaces on ship. Book early as spaces fill quickly. Please see your pre-departure guide for a list of provided gear for each Adventure Option.

## ✕ PADDLING EXCURSION

If you're interested in kayaking but would like to try something a bit less demanding than Sea Kayaking, you're the perfect candidate to sign up for a one-time paddle on our stable sit-on-top kayaks—perfect for anyone with minimal or no kayaking experience. Small groups of paddlers will be taken out on calm days, with our expert guides always present to provide instruction and help you connect with the polar sea. Pre-book into one of two priority groups. Any subsequent excursions can be booked on board, and groups will be assigned via a lottery.

## 🏄 STAND-UP PADDLEBOARDING




Combining a surfboard with a kayak, stand-up paddleboarding will give you a very personal and unique perspective on Antarctica. Conducted in small groups—in calm bays and harbors, in good weather conditions—and accompanied by a safety Zodiac, one-time stand-up paddleboarding excursions can be pre-booked into one of two priority groups. Any subsequent excursions can be booked on board, and groups will be assigned via a lottery.





# Departure Date

Snow Hill to the Peninsula: Shackleton's Emperors

<i>Dates</i>	<i>Days</i>	<i>Start / End</i>			
<b>ANTARCTIC 2025/26</b>					
OCT 30 - NOV 16, 2025	18	Buenos Aires	\$	\$	Included

## Raise a Glass and Stay Connected

See below for specifics on our complimentary Wi-Fi and bar service.



# Inclusions and Exclusions

## Inclusions

### RATES INCLUDE:

- An official Quark Expeditions parka to keep
- One 10- to 15-minute helicopter flightseeing excursion (weather and logistics permitting)
- Leadership throughout the voyage by our experienced Expedition Team, including shore landings and other activities
- All Zodiac transfers and cruising as per the daily program
- All shore landings as per the daily program
- Express bus tour to Tierra del Fuego National Park
- Shipboard accommodation with daily housekeeping
- All meals, snacks, soft drinks and juices on board throughout your voyage.
- Complimentary select beer, wines and select cocktails during bar service hours and dinner
- Complimentary coffee, tea and cocoa available around the clock
- Formal and informal presentations by our Expedition Team and guest speakers as scheduled
- A photographic journal documenting your expedition
- A pair of waterproof expedition boots on loan for landings and Zodiac cruising excursions
- Hair dryer and bathrobes in every cabin
- Complimentary Wi-Fi service on one device permitting basic Internet browsing, email, posting on social media and voice applications. (Premium packages are available for more data-intensive applications.)
- All miscellaneous service taxes and port charges throughout the program
- All luggage handling aboard the ship
- Emergency Evacuation insurance for all passengers to a maximum benefit of USD \$500,000 per person.

## Exclusions

### RATES SPECIFICALLY DO NOT INCLUDE:

#### For all voyages:

- International airfare
- Passport and applicable visa expenses
- Government arrival and departure taxes not mentioned
- Meals unless otherwise specified
- Baggage, cancellation, interruption and medical travel insurance—strongly recommended
- Excess-baggage fees on international and domestic flights
- Mandatory waterproof pants for Zodiac landing and cruising excursions, or any other gear not mentioned
- Laundry, spa services and other personal charges, unless specified
- Phone charges may vary by location
- Our basic complimentary Wi-Fi service does not include Premium packages which enable more data-intensive applications
- Voluntary gratuity at the end of the voyage for expedition staff and shipboard crew
- Additional overnight accommodation
- Arrival and departure transfers, except where explicitly stated
- Adventure Options not listed in Included Activities.

### **This expedition will have a separate (and mandatory) Transfer Package charge.**

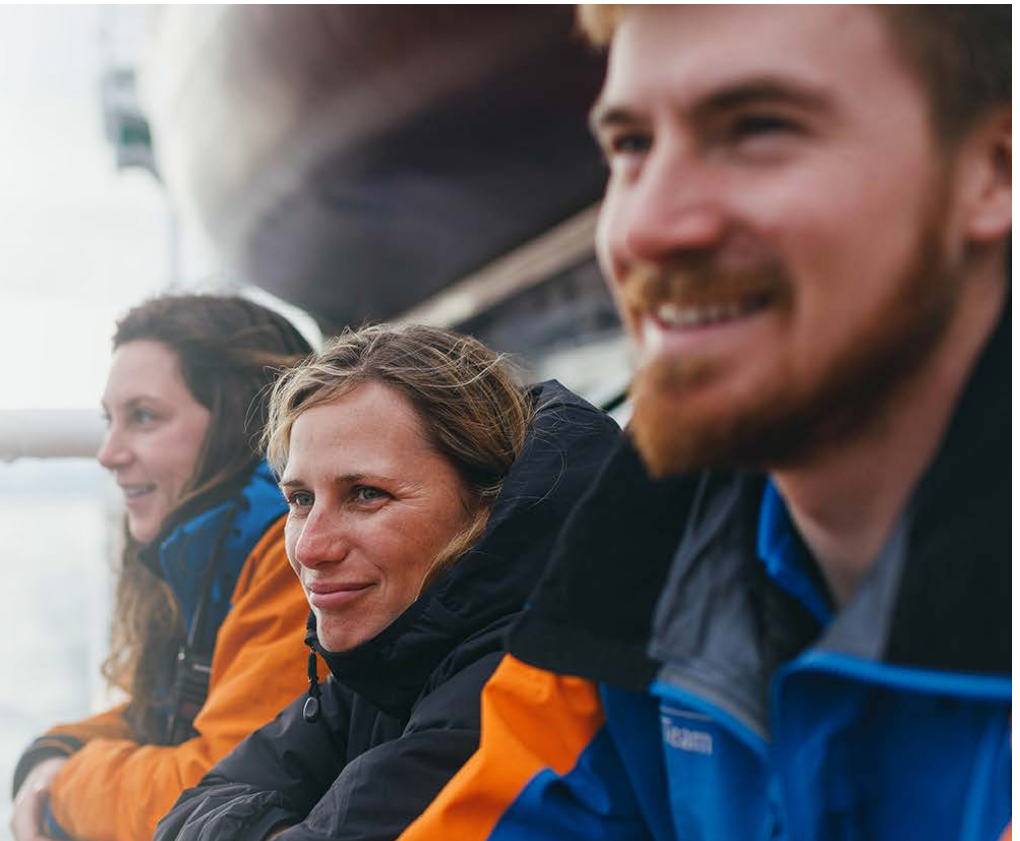
#### Mandatory Transfer Package Includes:

- One night's pre-expedition hotel accommodation in Buenos Aires with breakfast (Note: The number of guests per room is the same as cabin occupancy on the ship. Due to limited availability, travelers who reserve a suite on board are accommodated in standard rooms at the hotel. Triple rooms may not be available.)
- Group flight departing from Buenos Aires' domestic airport (Aeroparque/AEP) to Ushuaia, and returning to Buenos Aires' international airport (Ezeiza/EZE)
- Group transfer from hotel to airport in Buenos Aires
- Group transfer from Ushuaia airport to the ship, and return (Note: Transfer on arrival in Buenos Aires from airport to hotel at the beginning of the journey is not included. Please make your way to the included hotel.)
- Combined airport transfer and express bus tour of Tierra del Fuego National Park after disembarkation in Ushuaia



It was a real treat to be ‘Standing among the Emperors.’ Hundreds and hundreds of them. Arguably the most amazing bird on the planet. Expedition Leader Shane was a pro. I loved chatting with all manner of staff experts. They taught me a ton!”

— GARY K., SNOW HILL, 2023



## Your Expedition Team

In 2004, the Quark Expeditions team became the first to visit the Emperor penguin colony at Snow Hill Island. Since then, our Expedition Team has brought more people to Snow Hill than anyone else in the industry. In 2023 we brought guests to Snow Hill on two separate voyages. They were led by veteran Expedition Leader Shane Evoy, who has made 19 successful Snow Hill landings in his career—perhaps more than anyone else on the planet.

Our Expedition Leaders and their teams bring diverse expertise in subjects as varied as polar history, marine biology, glaciology, ornithology and photography. Their knowledge and enthusiasm will greatly enhance your immersion into the polar environment and further deepen your connection to the Antarctic.

With over 33 years of experience bringing passengers to remote polar regions and an industry-leading staff-to-guest ratio, we know how to safely handle the unexpected. Ensuring this hard-earned experience is passed on, all our expedition staff receive comprehensive training in Quark Academy, which provides hands-on polar expedition training prior to any staff member’s first voyage as well as ongoing training for experienced staff.



*The Quark Expeditions team has explored Snow Hill since 2004.*



*One of the many historic churches in Buenos Aires*



*Iguazú Falls*



*Ushuaia Maritime Museum*

# Extend Your Trip

## PRE- AND POST-EXPEDITION TRIP EXTENSIONS

Since you're traveling such a long way, you may want to spend extra time in Buenos Aires. We have a variety of pre- and post-expedition packages in this captivating city, known as the tango capital of the world. Enjoy an extensive city tour, take in a tango show and explore the unique neighborhoods of Recoleta, Palermo and San Telmo. Savor Argentine barbecue at a steakhouse (*parrilla*), then stroll the tree-lined boulevards and marvel at the historic architecture.

Take an extended tour from Buenos Aires to Iguazú Falls, and, if you're daring, walk the catwalks over the falls.

Upon arrival in Ushuaia, you can take in its unique museums, incredible hiking, and Patagonian cuisine. Spend a day in nearby Tierra del Fuego National Park, marvelling at the mountains, birdlife, waterfalls and forests.

*To discover the best options for extending your adventure, get in touch with your Travel Professional or a Polar Travel Adviser for seamless, worry-free booking of all trip extensions.*



## Meals on Board

If there is one constant on board, it is that you'll enjoy delicious meals daily. While meal times may change due to landings and wildlife encounters, you'll always be served three well-prepared meals per day. Most dietary restrictions can be accommodated by letting us know prior to your expedition.

Balena Restaurant, the main diningroom on Deck 5 of *Ultramarine*, features tables that accommodate 2 to 10. Guests can enjoy a quiet dinner with a loved one or join a larger table of new friends. Guests will enjoy views from every seat in addition to direct access to the wraparound deck. Guests can also enjoy a meal in Bistro 487, which offers an indoor/outdoor dining experience—perfect for enjoying the polar landscapes.

Breakfasts and lunches are normally served buffet style, while dinners are served plated. À la carte meals are made at the time of your order, allowing our chefs to prepare each dish to your individual needs, ensuring you receive top-quality meals during the course of your expedition.

Complimentary coffee, tea, cocoa and water stations are available around the clock, while soft drinks and juices are available during meals and when the bar is open—all included in the cost of your package.

Enjoy free beer, standard wines, spirits, and cocktails during bar service hours and dinner as part of our new “Raise a Glass and Stay Connected Free” program. Premium wines and champagne are available at extra cost and can be billed to your shipboard account. The well-stocked bars on the ship are open late morning, afternoon and evening, though hours may occasionally change to accommodate the expedition schedule.





## Possible Excursions

### Weddell Sea and Eastern Peninsula

#### BROWN BLUFF

A dormant volcano, Brown Bluff towers 2,225 feet (678 meters) over rookeries of Adélie and gentoo penguins, which number in the thousands. These penguins, some of which will be incubating their eggs, provide a unique symphony of background noise while you explore the bluff.

#### DEVIL ISLAND

Swedish explorers discovered the narrow island, which is 1.6 km long with a low summit at each end (twin horns), hence the name. Guests can hike to the summits to observe the Adélie penguin colony and enjoy 360 degree views of Vega Island and the northern Weddell Sea. Grounded bergs in the shallows at low tide provide a surreal touch to the experience.

#### HOPE BAY

Three members of the Swedish Antarctic Expedition spent the winter in a hut on the shores of Hope Bay in the early 1900s. The hut is located close to the jetty of Esperanza Station, an Argentine research station.

#### PAULET ISLAND

Located in the northwestern Weddell Sea, Paulet Island is home to a large Adélie penguin colony. With a volcanic cone that rises 1,158 feet (353 meters), the island reminds us that this was once a very active landscape. In addition to penguins, you may also view the remains of a historic hut built by members of the above-mentioned Swedish Antarctic Expedition. A cross marks the burial site of Ole Wengersgaard, a member of the crew.

#### SEYMOUR ISLAND

Also known by its Argentine name, Marimbio, the island is significant for fossil finds, ventifacts (ancient rocks polished smooth over time by wind and grains of sand) and for the remains of the KT Boundary, which marks the transition between the Cretaceous Period (dinosaurs and reptiles) and the Tertiary Period (mammals) of geological times. This era is known for the mass extinction of many forms of life, including dinosaurs. Located northeast of Snow Hill Island, this smaller island was originally mistaken for a cape.

#### WEDDELL SEA

While the Weddell Sea is home to plenty of whales (killer, humpback and minke), as well as leopard seal, crabeater and Weddell seals, it's especially known for its concentration of icebergs. It's possible to see dome-shaped, wedge-shaped, tilted and blocky icebergs, but it's the rectangular-shaped tabular icebergs that stand out because of their plateau-like flat top and steep sides. Some are as big as football fields.



# What to pack on your expedition

## VISITING THE EMPEROR PENGUIN COLONY

Located on sea ice, the Emperor rookery is situated some walking distance from the closest potential helicopter landing site (to not disturb the animals), so make sure you bring layered clothing suitable for covering the distance comfortably and additional layers to top-up whilst being more stationary at the colony.

**Please note:** The walk will be over uneven terrain of ice and varying levels of snow, so make sure you only bring what you can carry yourself without assistance.

- Waterproof pants (mandatory for every Zodiac and helicopter ride)
- Waterproof jacket (either the complimentary Quark 3-in-1 jacket or if you prefer, you can bring your own water and windproof winter warm anorak or extreme weather jacket (recommended: long/hooded\*- complete with a solid insulating layer (fleece/down\*\*) \*hood (with (faux) fur ruff /\*\*responsible Down Standard (RDS)
- (Reusable) Hand and feet warmers  Warm base-layer wool or synthetic top
- Binoculars  Warm base-layer wool or synthetic bottom
- Mid-layer(s)\* warm or (smart)wool/fleece top (\*to adjust depending on your thermo-regulation comfort and activity level /keep a dry spare in your bag, for layering)
- Mid-layer(s)\* warm or (smart)wool/fleece top (\*to adjust depending on your thermo-regulation comfort and activity level /keep a dry spare in your bag, for layering)
- Warm hat that covers ears (bring an extra for your daypack in case one gets wet)
- Balaclava, scarf, buff, or other warm face protection (against wind and snow)
- Warm wool or synthetic socks (keep a dry pair in your bag)
- Warm, insulating insole(s) (for included boots)
- Warm waterproof gloves or mitts (bring an extra for your daypack in case one gets wet)
- Additional warm glove liners (for operating the camera or binoculars while at the colony)
- Ski goggles (protection against snow flurries and wind) and polarized sunglasses with UV protection (for sunny moments)
- Cold protection cream with UV block (don't bring regular, water-based Sunscreen — it will freeze)
- Waterproof, lightweight backpack (Daypack to carry your spare clothing and gear to and from the colony)
- Additional reusable (thermo-regulating) water bottle or thermos (in addition to the reusable collapsible water bottle provided)
- Camera(s) and pertinent equipment with enough spare batteries, ideally in a 'warm pack' (due to the low temperatures batteries will run out faster than usual)
- Folding (collapsible) ski pole walking stick with seat (for balance and stability aid for walking on uneven terrain and seating option for while at the colony)
- Small quick dry towel/handkerchief (to get rid of perspiration or snow)

› To view our packing checklist online, visit:

[QuarkExpeditions.com/What-to-Pack/Snow-Hill-Island](https://www.quarkexpeditions.com/What-to-Pack/Snow-Hill-Island)

› Related topics are covered on our Frequently Asked Questions page:

[QuarkExpeditions.com/Frequently-Asked-Questions](https://www.quarkexpeditions.com/Frequently-Asked-Questions)



Scan this QR code or [click here](#) to watch our video on what to pack before you go.

**WHAT TO BRING** Packing for the Polar Regions doesn't have to be daunting, and to make it easier for you, all Quark Expeditions voyages include a Quark parka to keep, and a loan of insulated waterproof boots. Additional suggested items include:

## EXPLORING THE ANTARCTIC

Basic Antarctic gear recommendations (while on outer decks aboard the ship or during Zodiac Operations for alternative Landings etc.)

- Waterproof pants (mandatory for every Zodiac and helicopter ride)
- Waterproof jacket (the complimentary Quark 3-in-1 is ideal for all excursion outings with our Zodiacs)
- Binoculars  Base-layer wool or synthetic top
- Mid-layer warm or fleece top\*  Mid-layer warm or fleece bottom\*
- Warm hat that covers ears  Base-layer wool or synthetic bottom
- Waterproof gloves or mitts  Glove liners\*
- Warm wool or synthetic socks (keep a dry pair in your bag, and bring extras for layering)
- Waterproof, lightweight backpack or dry sack for camera and gear or waterproof cell phone case / rain sleeve
- Ski goggles (for Zodiac cruising on snowy or windy days)
- Hat, buff or scarf (for wind and weather protection)
- UV protection (sun hat, polarized sun glasses, sun block, lip balm)
- Collapsible walking stick for hikes (if required). Quantities are available on every vessel to borrow.

*\* recommended layering depending on the conditions of the day and reflecting your personal thermo-regulation comfort levels.*

## TO WEAR ON BOARD

- The complimentary Quark 3-in-1 Parka provided on board is designed with a waterproof shell that can be worn out on deck, and a removable liner that you can wear to stay comfortable indoors)
- Comfortable casual clothing like lighter shirts, pants or jeans, etc. (in case the ship gets warm)
- Comfortable non-slip closed-toed, heelless shoes (flip flops, sandals or slip-on shoes should not be worn on board due to safety concerns)
- Workout attire (for the fitness center)
- Swimsuit (for the Polar Plunge. Some vessels may also have a pool, hot tub, sauna and/or steam room. See your ship book for details.)

**Just a reminder:** No formal evening wear required on our voyages but if you would like to bring something a little more dressy for the Captain's welcome and farewell cocktails you may certainly do so.

## ADDITIONAL ITEMS

- Passport, visas, immunization records, travel documents, etc. as required
- Camera gear—complete with charger, storage medium, transport and cleaning kit (lens cloth etc.) and extra batteries
- Reusable waterproof bags or plastic bags with zippers (to keep small items organized and cameras dry)
- Voltage converters and plug adapters (see ship book for details)
- Seasickness, indigestion, headache, or other medications
- Earplugs and eye masks for sleeping
- Moisturizer for face and hands (skin dryness due to wind and temperature changes)
- Credit card and small amount of local currency (see pre-departure book for more details)

## WEATHER CONDITIONS AND TEMPERATURES

Polar weather is extremely variable; temperatures may hover around the freezing mark and winds can be strong. The extended daylight warms sheltered areas so that you may sometimes find it warmer at times. However, you may encounter rain, snow squalls, fog and white-outs during an expedition and should be ready for any conditions.



Polar-Obsessed Since 1991

TO BOOK YOUR NEXT ADVENTURE

Contact your Travel Professional  
or a Quark Expeditions® Polar Travel Adviser

**TOLL FREE AND LOCAL NUMBERS:**

North America (Toll Free) **1 888 332 0008**

U.K. Tel **+44 203 514 2712**

U.K. (Toll Free) **0 808 120 2333**

Australia Tel **+61 2 72580333**

Australia (Toll Free) **+61 1800 953518**

France Tel **+33-1 80 14 01 05**

France (Toll Free) **08 05 08 66 46**

**QuarkExpeditions.com**



**PHOTO CREDITS** (over all Expedition Brochures for the Antarctic 2025/2026 season):

Acacia Johnson; David Merron; Michelle Sole; Nicky Souness; Samantha Crimmin; Hugo Perrin; Taylor Cranney;  
Sam Edmonds; Abbey Weisbrot; Hans Lagerweij; Rogelio Espinosa; Cindy Miller Hopkins; Grange Productions;  
Adobe Stock

**EXPEDITION BROCHURE**  
January 22, 2024