



The Leader in Polar Adventures

ARCTIC 2025

Adventures in Northeast Greenland

Glaciers, Fjords and the Northern Lights



Contents

- 1 Overview
- 2 Itinerary
- 4 Arrival and Departure Details, and International Flight Planning
- 6 Your Ship
- 8 Included Activities
- 9 Adventure Options
- 10 Departure Dates
- 11 Inclusions and Exclusions
- 12 Your Expedition Team
- 13 Meals on Board
- 14 Possible Excursions
- 17 Packing Checklist



Overview

Adventures in Northeast Greenland: Glaciers, Fjords and the Northern Lights

Explore some of the last unspoiled wilderness areas on the planet by joining our *Adventures in Northeast Greenland: Glaciers, Fjords and the Northern Lights* itinerary. Cruising along Greenland's remote northeast coast, home to the largest fjord system in the world, you'll discover diverse and dramatically rugged landscapes—and possibly cap off a day of Arctic exploration with a nighttime show of the dramatic Aurora borealis as you'll be in a region where the Northern Lights are regularly visible. Immersed in the untamed beauty of the Arctic, you'll experience Greenlandic culture firsthand at Ittoqqortoormiit, visit ancient Thule sites steeped in history, and marvel at the majesty of massive icebergs and against a spectacular mountain backdrop.

The Arctic has been inspiring explorers for centuries, and our expeditions offer the chance for you to discover why. We're excited to host you on your unforgettable adventure! Feel free to reach out to our team of Polar Travel Advisers or your travel professional, who can answer your questions and provide assistance at any time.

EXPEDITION IN BRIEF



Search for iconic Arctic wildlife, such as polar bears, muskoxen and seals



Hike the tundra, visit an Inuit community and explore a breathtaking fjord system of East and Northeast Greenland



Strong likelihood of viewing the enchanting Northern Lights (Aurora borealis)



Cruise in a Zodiac to explore majestic landscapes



Immerse yourself in the icy realm of the Arctic with optional kayaking adventures



Itinerary

DAY 1 | ARRIVE IN REYKJAVIK, ICELAND

Arrive in the Icelandic capital in the morning and make your way to your included hotel. You will have the day to explore the city on your own.

DAY 2 | EMBARK

This afternoon, you'll board your vessel and begin your expedition. Get ready for a great adventure ahead!

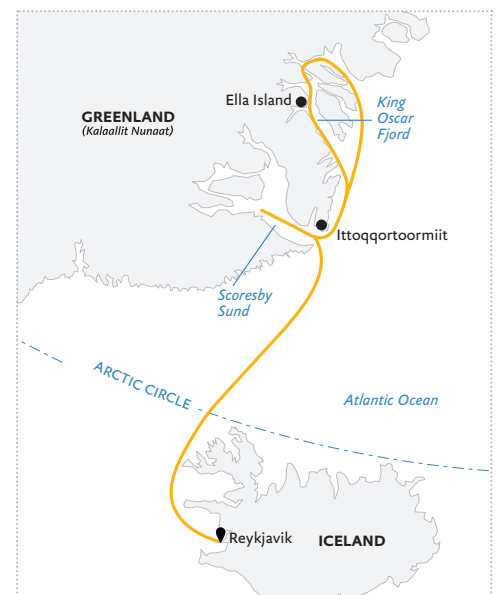
DAY 3 | CRUISING

As we cruise north across the Denmark Strait, with views of Greenland in the distance, your Expedition Team will prepare you for the adventures that await. Learn about the storied history and politics of the Arctic, its fascinating wildlife, geology, ecology and climate,

and the incredible sights you will soon explore. The team will also search for the seabirds soaring around your ship, as well as the whales that frequent the waters here.

DAYS 4 - 8 | EXPLORING NORTHEAST GREENLAND

Experience the wonders of nature in Segelsellskåbets Fjord, where a spectacular display of "geological art" awaits your landing: alternating layers of limestone and dolomite stretching before you in a stunningly beautiful canvas created over tens of thousands of years. In the afternoon, cruise the natural beauty of Alpefjord and pass by the impressive Selströms Glacier.



ADVENTURES IN NORTHEAST GREENLAND: Glaciers, Fjords and the Northern Lights
Onboard *Ocean Explorer*

During your tour of Greenland's remote northeast coast, you'll enjoy Zodiac cruises and shore visits to several locations. We'll also keep an eye out for grazing muskoxen, as 40 percent of the world's population lives in Northeast Greenland National Park. At the entrance of the sound is East Greenland's most northerly community, Ittoqqortoormiit, where you may spend time interacting with the Inuit people and learning about their way of life. You may also have a chance to see the Northern Lights here if the skies are clear. Magnificent vistas also await at Kong Oscar Fjord, with possible landings at Ella Ø, renowned for its rugged cliffs and ice-choked waters, and flower-rich Botanikerbugt, on Ymer Ø.

DAY 9 - 10 | SAILING SOUTHBOUND ACROSS DENMARK STRAIT AND ONCE MORE CROSSING THE ARCTIC CIRCLE, THOUGH SOUTHBOUND THIS TIME.

As your Arctic adventure winds down, take in a presentation by our onboard experts, share your photos, sip an icy cocktail in the bar or watch a movie—there are many activities during your time at sea. Your Expedition Team will also be on hand to answer any questions and point out wildlife.

DAY 11 | DEPART REYKJAVIK, ICELAND

You'll disembark in Reykjavik, Iceland's capital, at the end of your journey. If you have booked post-expedition accommodation, we provide a transfer to a central downtown location.

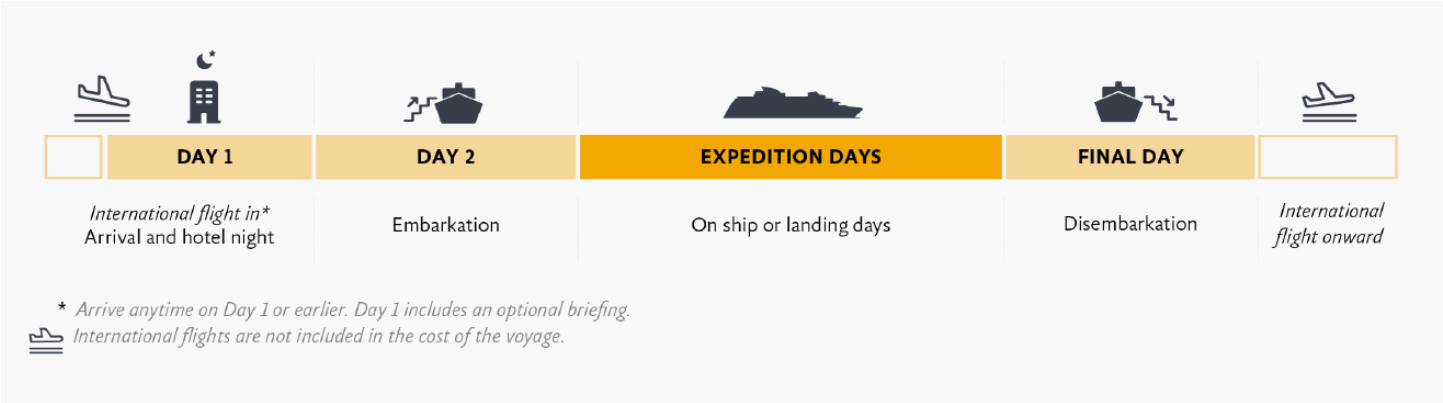
EXPEDITION SPIRIT

Embracing the unexpected is part of the legacy—and excitement—of expedition travel. When traveling in extremely remote regions, your Expedition Team must consider the sea, ice, wildlife, and weather to guide the route and itinerary details. This itinerary is a tentative outline of what you'll experience on this voyage; please be aware that no specific itinerary can be guaranteed. By the same token, wildlife encounters as described are expected but not guaranteed. Your Expedition Team will use their considerable experience to seek out wildlife in known habitats, but the presence of any particular species of bird or marine wildlife is not a guarantee.





Arrival and Departure Details, and International Flight Planning



As you prepare for your journey, you may be interested to know your arrival and departure details. Since air transportation is not included in the cost of your expedition, you have some flexibility in planning your flights.

Arrival Day and Embarkation

DAY 1 — ARRIVING AND HOTEL NIGHT IN REYKJAVIK

You may arrive in Reykjavik at any time during Day 1 of the itinerary and make your way to the included hotel.

DAY 2 — EMBARKATION IN REYKJAVIK

On the morning of Day 2, your luggage will be collected from the lobby of your hotel, transferred to the ship and stored in your cabin.

Ship embarkation will occur on Day 2 of your itinerary, usually around 4pm. You and your shipmates will meet in the lobby of your hotel and board the waiting buses for transfer to the ship. Information about transfer timing will be posted in your Reykjavik hotel.



Final Day and Departure

DISEMBARKATION IN REYKJAVIK AND ONWARD

Your ship is scheduled to arrive in Reykjavik and you will disembark after breakfast. The process takes about an hour. After disembarkation, you will transfer to a central downtown location.

Arrival and Departure Transfers

REYKJAVIK AIRPORT TRANSFERS

ARRIVAL

An arrival transfer in Reykjavik is not included; if you require a transfer to the city, you will need to arrange your own transportation. Most airports used on our voyages have good taxi ranks in the arrivals area, or you can often pre-book a transfer online.

DEPARTURE

A transfer is provided from the Reykjavik port to a central downtown location at the end of the expedition. A transfer to the airport is not included.

PLEASE NOTE

Included Hotel Accommodations:

Your included accommodation begins on Day 1 of your itinerary, and the specific hotel(s) will be indicated in your final voyage confirmation. If you are arriving prior to Day 1 of your expedition or are staying after the disembarkation day. If you would like to extend your stay, you can book directly with the hotel or through a third party.





Ultramarine



World Explorer



Ocean Explorer

Our Fleet of Small Polar Vessels

Quark Expeditions boasts the most diverse polar-class fleet of any polar operator, and the ability to offer you this incredible voyage on one of our ice strengthened vessels.

The entire Quark Expeditions fleet is built for comfort—and for challenging polar environments, allowing us to take you to places ordinary cruise companies wouldn't dream of going.

Plus, you'll do so while enjoying excellent amenities and superbly comfortable cabins.



Your Ship

OCEAN EXPLORER

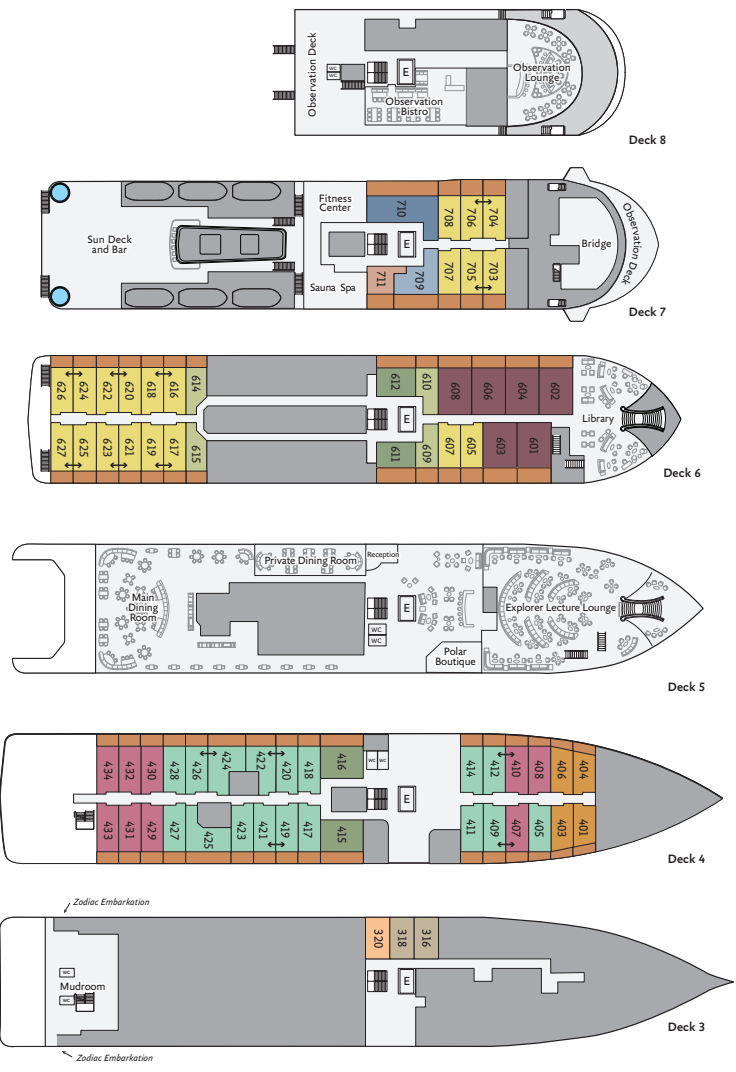
Ocean Explorer, the newest addition to our fleet, is modern, elegant and purpose-built for polar exploration. The 138-passenger vessel has been designed with the latest in expedition ship technology. One of the ship's key features is the ULSTEIN X-BOW®, a marine engineering innovation that ensures a comfortable and smooth sailing experience thanks to the inverted bow. Located at the bow is the two-story, light-filled library, which introduces a welcome airiness to the expedition ship. Spacious cabins feature a modern, bespoke Scandinavian design and almost all have verandas. Guests can relax and find comfort in the spacious gym, sauna with large windows, and two outdoor Jacuzzis. *Ocean Explorer* features ample outdoor viewing areas and multi-height outer decks, which are ideal for long-view photography and wildlife viewing. The vessel is equipped with a fleet of 15 Zodiacs that enable guests to get off the ship quickly and safely for off-ship adventures. In addition to the well-appointed and spacious public areas, *Ocean Explorer* has an industry-leading mix of sustainability systems, including fuel-efficient Rolls Royce engines.

SHIP SPECIFICATIONS:

- Staff and Crew: 131
- Guests: 138
- Lifeboats: 2
- Ice Class: 1A, PC6

Visit QuarkExpeditions.com to view deck plan details.

- | | | | |
|--|--|--|---|
| ● Owner's Suite | ● Junior Suite | ● Deluxe Veranda Mid | ↔ Interconnecting Suites |
| ● Explorer Suite | ● Grand Veranda Stateroom | ● Deluxe Veranda Fwd | <small>Accessibility modified cabin; please speak to your travel professional for details</small> |
| ● Studio Veranda Single | ● Studio Veranda Stateroom | ● Studio Double | ■ Balcony |
| ● Royal Veranda Stateroom | ● Deluxe Veranda | ● Studio Single | |





Included Activities

All of these activities are included in the price of your trip.

Ready for a little adventure beyond your ship? Each Quark Expeditions® voyage offers a variety of recreational activities to enhance your polar experience.

ZODIAC CRUISING

Zodiacs are the workhorses of polar expeditions, taking you to places the ships can't access, allowing you to reach remote shorelines, explore shallow inlets and search for wildlife. Expedition staff make stepping in and out of them safe and comfortable, and your Zodiac drivers will provide active interpretation, making the landscape come even more alive.

HIKING

Led by experienced staff, exploring on foot is one of the best ways to appreciate the polar landscapes. Our guides are able to accommodate a range of skill levels to suit every guest.

PRESENTATIONS

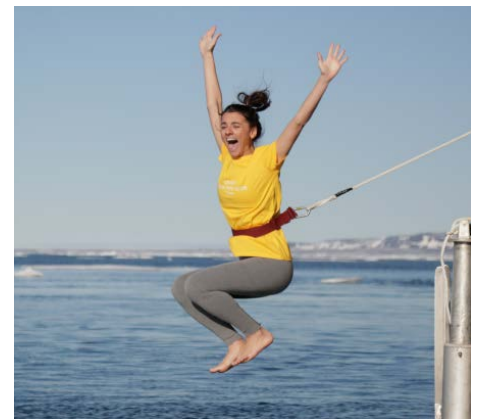
Enjoy daily chats with and presentations by our world-class onboard polar experts —expedition guides, specialists, photography guides and other special guests who will introduce you to the fascinating history, biology, ornithology, glaciology and geology of the region, and much, much more.

POLAR PLUNGE

This rite of passage, scheduled only once per expedition, gives you the chance to jump safely into the bracing Arctic waters under the watchful eye of our staff —and just about every single camera on board!

PHOTOGRAPHY

Documenting your voyage so you can take the memories home is a rewarding experience. Our photography guide will help you hone your skills to capture the beauty of the polar regions.





Adventure Options

All of these activities cost extra and should be booked in advance of your trip.



PLEASE NOTE

For all paid activities pre-booking is required. We recommend booking early as spaces fill quickly.

SEA KAYAKING

Imagine gliding across the surface of a bay in the presence of icebergs and glaciers. Our Sea Kayaking program is a great way to intimately explore your surroundings. A small group of kayakers will plan to go out multiple times per voyage as an alternative to shore landings or Zodiac cruises.

The number of opportunities to kayak is weather dependent, and will be conducted only during calm conditions. Prior kayaking experience is required, and you must be able to do a wet exit to participate. Beginners interested in kayaking should consider participating in the Paddling Excursion.

PADDLING EXCURSION



If you're interested in kayaking but would like to try something a bit less demanding than Sea Kayaking, you're the perfect candidate to sign up for a one-time paddle on our stable sit-on-top kayaks—perfect for anyone with minimal or no kayaking experience. Small groups of passengers will be taken out on calm days, with our expert guides always present to provide instruction and help you connect with the polar sea. Two groups of 10 will be pre-booked, and once successfully completed, any subsequent outings will be offered via lottery on board.



Departure Dates

Adventures in Northeast Greenland: Glaciers, Fjords and the Northern Lights

OCEAN EXPLORER

<i>Dates</i>	<i>Days</i>	<i>Start / End</i>	 Sea Kayaking	 Paddling Excursion
ARCTIC 2025				
AUG 26 - SEP 5, 2025	11	Reykjavik	\$	\$
SEP 4 - 14, 2025	11	Reykjavik	\$	\$
SEP 13 - 23, 2025	11	Reykjavik	\$	\$
SEP 22 - OCT 2, 2025	11	Reykjavik	\$	\$

\$ Paid Activities

Raise a Glass and Stay Connected!

See below for specifics on our complimentary Wi-Fi and bar service, which takes effect November 2024.



Inclusions and Exclusions

Inclusions

RATES INCLUDE:

- Leadership throughout your voyage by our experienced Expedition Leaders, including shore landings and other activities
- All Zodiac transfers and cruising as per the daily program
- All shore landings as per the daily program
- Shipboard accommodation with daily housekeeping
- All meals, snacks, soft drinks and juices on board throughout your voyage (Please inform us of any dietary requirements as far in advance as possible. Unfortunately, the ships' galleys cannot prepare kosher meals.)
- **NEW** Free beer, standard wines, spirits, and cocktails during bar service hours and dinner
- Complimentary coffee, tea and cocoa available around the clock
- Formal and informal presentations by our Expedition Team and guest speakers as scheduled
- A photographic journal documenting the expedition
- A pair of waterproof expedition boots on loan for landings and Zodiac cruising excursions

- An official Quark Expeditions® parka to keep
- Hair dryer and bathrobes in every cabin
- **NEW** Complimentary Wi-Fi service on one device permitting basic Internet browsing, email, posting on social media and voice applications. (Premium packages are available for more data-intensive applications.)
- All miscellaneous service taxes and port charges throughout the program
- All luggage handling aboard the ship
- Emergency Evacuation insurance for all passengers to a maximum benefit of USD \$500,000 per person
- Greenland voyages cruise passenger tax
- One night's pre-expedition hotel accommodation in Reykjavik
- Group transfer from the Reykjavik hotel to the ship on Day 2
- Group transfer from the ship to downtown Reykjavik on disembarkation day

Exclusions

RATES SPECIFICALLY DO NOT INCLUDE:

- International airfare
- Arrival and departure transfers
- Passport and visa expenses
- Government arrival and departure taxes not mentioned above
- Meals ashore unless otherwise specified
- Baggage, cancellation, interruption and medical travel insurance—strongly recommended
- Excess-baggage fees on international and domestic flights
- Mandatory waterproof pants for Zodiac cruising, or any other gear not mentioned
- Laundry, bar, beverage and other personal charges unless specified
- Phone charges may vary by location
- Voluntary gratuity at the end of the voyage for shipboard staff and crew
- Additional overnight accommodation
- Adventure Options not listed in Included Activities



Your Expedition Team

Our Expedition Leaders and their teams bring diverse expertise in subjects as varied as polar history, marine biology, glaciology, ornithology and photography. Their knowledge and enthusiasm will greatly enhance your immersion into the polar environment and further deepen your connection to the Arctic.

With over 30 years of experience bringing passengers to remote polar regions and an industry-leading staff-to-guest ratio, we know how to safely handle the unexpected. Ensuring this hard earned experience is passed on, our expedition staff receive comprehensive training in Quark Academy, which provides hands-on polar expedition training prior as part of our onboarding process as well as ongoing training for experienced staff.



Raise a Glass and Stay Connected!

See below for specifics on our complimentary Wi-Fi and bar service, which takes effect November 2024.



Meals on Board

If there is one constant on board, it is that you'll enjoy delicious meals daily. While meal times may change due to landings and wildlife encounters, you'll always be served three well-prepared meals per day. Most dietary restrictions can be accommodated by letting us know prior to your expedition.

Breakfasts and lunches are normally served buffet style, while dinners are served plated. À la carte meals are made at the time of your order, allowing our chefs to prepare each dish to your individual needs, ensuring you receive top-quality meals during the course of your expedition.

Complimentary coffee, tea, cocoa and water stations are available around the clock, while soft drinks and juices are available during meals and when the bar is open—all included in the cost of your package.

NEW Enjoy free beer, standard wines, spirits, and cocktails during bar service hours and dinner as part of our new “Raise a Glass and Stay Connected Free” program. Premium wines and champagne are available at extra cost and can be billed to your shipboard account. The well-stocked bars on the ship are open late morning, afternoon and evening, though hours may occasionally change to accommodate the expedition schedule.





Possible Excursions

When traveling in extremely remote regions, your Expedition Team must consider the sea, ice and weather to guide the route and itinerary details. The following sites are a sample of what you may experience on your expedition, whether by ship, Zodiac cruise, or shore landing.

Iceland

REYKJAVIK

Iceland has been ranked by the United Nations as one of the best countries in which to live. Its capital, Reykjavik (which means “Smoky Bay”), was named by the country’s first settler, Norseman Ingólfur Arnarson, who was inspired by the geothermal mist rising from the ground.

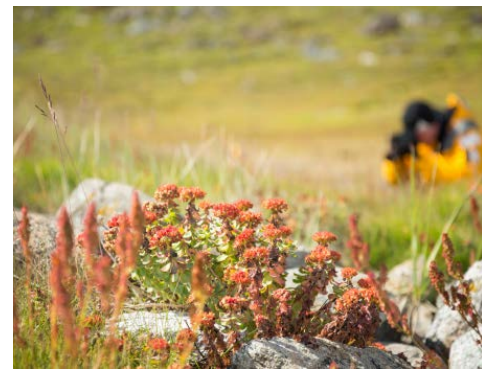
East/Northeast Greenland

BLOMSTERBUGTEN

Known as the Bay of Flowers, Blomsterbugten boasts a colorful and lush landscape that is quite different from other Arctic regions. Expect spectacular fall colors, with a possible hike to Noa Lake.

BOTANIKERBUGT

In King Oscar Fjord, this bay is home to a variety of flora. It is on the south coast of mountainous Ymer Ø (Ymer Island), part of Northeast Greenland National Park.



C. HOFMANN HALVØ

This peninsula can be a great location for viewing muskoxen. It is also home to wheatears and snow buntings, and you may spot rock ptarmigans or great northern divers (common loon) while exploring the shore.

BJORNE ISLANDS (BEAR ISLANDS)

Encounter stunning icebergs at this group of small, rugged islands, which offer stupendous views of Scoresby Sund and Øfjord. If conditions allow for a landing, take a short hike to an archaeological site.

FREDERIKSDAL

Exploring this valley system on foot may offer views of muskoxen, glaciers and ancient Thule remains.

HOLM BAY AND ELLA Ø (ELLA ISLAND)

Toward the northern end of Scoresby Land is King Oscar Fjord. Holm Bay is a common landing site here, offering panoramic views of the fjord and

surrounding area. Within the fjord, and hence within Northeast Greenland National Park, lies Ella Ø (Ella Island). The legendary Danish navy unit Sirius Sledge Patrol operates here in summer. Muskoxen may also be spotted.

ITTOQQORTOORMIIT

Around 360 people call this northern settlement home. Ittoqqortoormiit is the picturesque and very welcome port of call for expedition cruise ships exploring the north-east coast of Greenland during summer. Focal points include the church and the small, local museum whose historical costumes, tools, and pictures tell the story of lives lived in remote and harsh conditions. Visitors can also enjoy discovering the vibrantly green football (soccer) field set in an endless landscape of rock and snow, and wandering between the colourful houses soaking in the atmosphere of Greenland's most isolated town.



Ø FJORD

One of Scoresby Sund's many fjords, this deep fjord, whose name means Island Fjord, is truly impressive, flanked by towering mountains and dotted with large icebergs.

KING OSCAR FJORD

Also known as Kangerluk Kong Oscar, King Oscar Fjord is a major fjord system in Northeast Greenland National Park, with the main fjord stretching 110 kilometres in length and anywhere from 10 to 25 kilometres wide. The fjord system marks the northern border of the Scoresby Land Peninsula. Many visitors remark on the bright sandstone of King Oscar Fjord. When conditions allow, Quark Expeditions' guests have the opportunity to hike in Skipperdal Valley at Kong Oscar Fjord.

EXPEDITION SPIRIT

Embracing the unexpected is part of the legacy—and excitement—of expedition travel. When traveling in extremely remote regions, your Expedition Team must consider the sea, the ice and the weather to guide the route and itinerary details. This itinerary is a tentative outline of what you'll experience on this voyage; please be aware that no specific itinerary can be guaranteed. By the same token, wildlife encounters as described are expected, but not guaranteed. Your Expedition Team will use their considerable experience to seek out wildlife in known habitats, but the presence of any particular species of bird or marine wildlife is not a guarantee.



What to pack on your Arctic expedition

WHAT TO BRING! Packing for the Polar Regions doesn't have to be daunting, and to make it easier for you, all Quark Expeditions voyages include a Quark parka to keep, and a loan of insulated waterproof boots. Additional suggested items include:

BY SEA

All transfers ship to shore and Zodiac/ship cruising.

- Waterproof pants (mandatory for every Zodiac ride)
- Base-layer wool or synthetic top*
- Base-layer wool or synthetic bottom*
- Mid-layer warm or fleece top*
- Mid-layer warm or fleece bottom*
- Warm hat that covers ears (bring an extra)
- Scarf, buff, or other face protection
- Warm wool or synthetic socks (keep a dry pair in your bag, and bring extras for layering)
- Waterproof gloves or mitts (bring an extra, lighter pair for hiking)
- Glove liners*
- Hand and feet warmers*
- Binoculars
- Polarized sunglasses with UV protection (consider bringing an eyewear retainer: string/clip etc.)
- Ski goggles (for Zodiac cruising on snowy or windy days)
- Waterproof, lightweight backpack or dry sack and/or rain sleeve for camera or a waterproof phone case (to keep camera & gear dry)

*recommended layering depending on the conditions of the day and reflecting your personal thermo-regulation comfort levels.

BY LAND (Shore Excursions and Hiking)

In addition to the gear requirements (as above) mandatory for the transit from ship to shore, it is recommended to bring:

- Hat, buff or scarf (for wind and weather protection)
- UV protection (sun hat, polarized sun glasses, sun block, lip balm etc.)
- Collapsible walking sticks for hikes (if required)
Quantities are available to borrow on every vessel
- Additional reusable (thermos-regulating) water bottle (in addition to the reusable collapsible water bottle provided)

TO WEAR ON BOARD

- The complimentary Quark 3-in-1 Parka provided on board is designed with a waterproof shell that can be worn out on deck, and a removable liner that you can wear to stay comfortable indoors)
- Comfortable casual clothing like lighter shirts, pants or jeans, etc. (in case the ship gets warm)
- Comfortable non-slip closed-toed, heelless shoes (flip flops, sandals or slip-on shoes should not be worn on board due to safety concerns)
- Workout attire (for the fitness center and other indoor activities)
- Swimsuit (for the Polar Plunge! Some vessels may also have a pool, hot tub, sauna and/or steam room. See your ship book for details.)

Just a reminder: No formal evening wear required on our voyages but if you would like to bring something a little more dressy for the Captain's welcome and farewell cocktails you may certainly do so!

ADDITIONAL ITEMS

- Passport, visas, immunization records, travel documents, etc. as required
- Camera gear—complete with charger, storage medium, transport and cleaning kit (lens cloth etc.) and extra batteries
- Reusable waterproof bags or plastic bags with zippers (to keep small items organized and cameras dry)
- Voltage converters and plug adapters (see ship book for details)
- Seasickness, indigestion, headache, or other medications
- Earplugs and eye masks for sleeping
- Moisturizer for face and hands (skin dryness due to wind and temperature changes)
- Credit Card & Small amount of local currency (see pre-departure book for more details)

- › To view our packing checklist online, visit: [QuarkExpeditions.com/What-to-Pack/Arctic](https://www.quarkexpeditions.com/What-to-Pack/Arctic)
- › Related topics are covered on our Frequently Asked Questions page: [QuarkExpeditions.com/Frequently-Asked-Questions](https://www.quarkexpeditions.com/Frequently-Asked-Questions)



Scan this QR code or [click here](#) to watch our video on what to pack before you go!

WEATHER CONDITIONS & TEMPERATURES

Polar weather is extremely variable; temperatures may hover around the freezing mark and winds can be strong. The extended daylight warms sheltered areas so that you may sometimes find it warm enough for t-shirts. However, you may encounter rain, snow squalls, fog and white-outs during an expedition and should be ready for any conditions.



The Leader in Polar Adventures

TO BOOK YOUR NEXT ADVENTURE

Contact your Travel Professional
or a Quark Expeditions® Polar Travel Adviser

TOLL FREE AND LOCAL NUMBERS:

North America (Toll Free) **1 888 332 0008**

U.K. Tel **+44 203 514 2712**

U.K. (Toll Free) **0 808 120 2333**

Australia Tel **+61 2 72580333**

Australia (Toll Free) **+61 1800 953518**

France Tel **+33-1 80 14 01 05**

France (Toll Free) **08 05 08 66 46**

QuarkExpeditions.com

Photos captured with a telephoto lens from a responsible distance, following regulatory/AECO guidelines.

PHOTO CREDITS: *(over all Expedition Brochures for the Arctic 2025 season):*

Acacia Johnson; David Merron; Nicky Souness; Samantha Crimmin; Sam Edmonds; Michelle Sole; Cindy Miller Hopkins; Sue Flood; Hugo Perrin; Peter Lindstrom; Visit Greenland; Nicolas Singh; Rogelio Espinosa; Grange Productions; Fokus Productions; Adobe Stock; iStock

EXPEDITION BROCHURE
March 5, 2024