

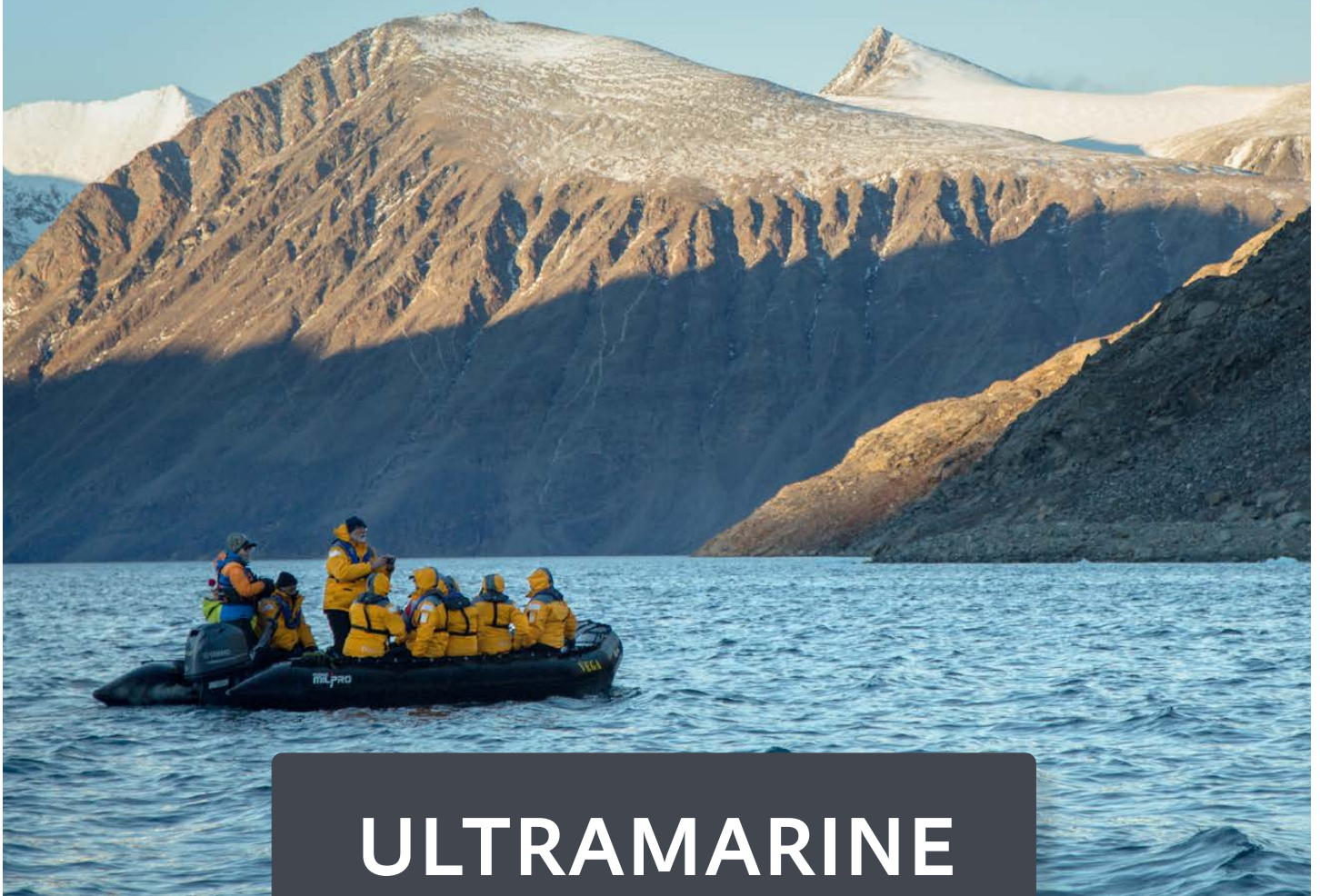


The Leader in Polar Adventures

ARCTIC 2025

Canada's Remote Arctic

Northwest Passage to Ellesmere
and Axel Heiberg Island



ULTRAMARINE

DESIGNED TO GO BEYOND

Contents

- 1 Overview
- 2 Itinerary
- 6 Arrival and Departure Details,
and International Flight Planning
- 8 Your Ship
- 10 Included Activities
- 12 Adventure Options
- 13 Departure Dates
- 14 Inclusions and Exclusions
- 15 Your Expedition Team
- 16 Meals on Board
- 17 Possible Excursions
- 20 Packing Checklist



Overview

Canada's Remote Arctic: Northwest Passage to Ellesmere and Axel Heiberg Islands

Here, at the top of the world, you will be able to experience the planet in its most pure and natural state. You'll witness a polar landscape preserved in all of its astonishing beauty—unsullied by human development, free of the blemishes of unfettered civilization. On this exciting itinerary, we follow the natural guides of sea and ice to showcase the region's cultural, historic and geographic treasures, aiming to approach the farthest stretches of this rugged, rarely visited landscape. Our goals for this voyage are to visit Nunavut's northernmost islands: Axel Heiberg, and Ellesmere. Our game-changing new expedition vessel *Ultramarine's* unprecedented range of Adventure Options, including activities such as helicopter flightseeing, gives you an unrivaled polar experience. You'll be able to view the magnificent wildlife that make their home in this forbidding region, including polar bears, whales, seals, walrus, caribou, and muskox. You'll also learn about the rich Inuit culture that has persevered against all odds. From soaring cliffs to spectacular glacial formations, to stunning alpine vistas, expansive waterways to sheltered shores, Canada's Remote Arctic provides the definitive experience of a mysterious, magical region few ever get to see.

Our newest ship, *Ultramarine*, equipped with two twin-engine helicopters and 20 quick-launching Zodiacs, enables you to explore this breathtaking environment from brand new perspectives. You'll experience the same sense of wonder felt by early explorers as they navigated the region's formidable bays, inlets and channels.

EXPEDITION IN BRIEF



Channel your inner explorer as we set out to reach Canada's most northerly islands: Axel Heiberg and Ellesmere Island



Enjoy unforgettable flightseeing aboard *Ultramarine's* two helicopters



Search for iconic Arctic wildlife, such as polar bears, walrus and muskoxen



Gain insight into indigenous culture from Inuit guides onboard and ashore



Set foot on the Devon Ice Cap during the optional Ice Sheet Experience



Itinerary

DAY 1 | ARRIVE IN CALGARY, CANADA

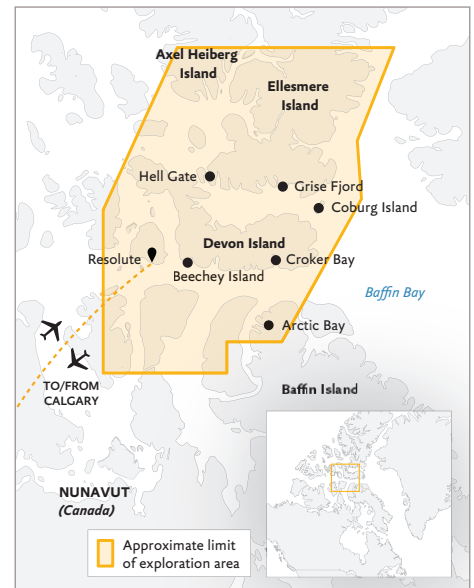
Your Arctic expedition begins in Calgary. Explore this vibrant city on your own before you spend the night enjoying the comforts and amenities of your designated hotel.

DAY 2 | FLY TO RESOLUTE & EMBARK

This morning, board your charter flight to Resolute, Nunavut. Upon arrival, you may have a chance to check out this small hamlet on foot before being transferred to your ship via Zodiac or helicopter (depending on ship location and weather conditions).

DAYS 3 - 10 | EXPLORING CANADA'S HIGH ARCTIC

Cruising around the remote islands of the Canadian High Arctic aboard *Ultramarine*, the newest ship in our fleet, you'll navigate the same icy inlets, channels and bays that fascinated legendary explorers of long ago. Designed to give polar adventurers unprecedented access to the hardest-to-reach places on the planet—and equipped with two onboard twin-engine helicopters for unparalleled access to areas only Quark Expeditions can bring you—this one-of-a-kind ship will take you beyond the familiar in polar exploration. Throughout your journey,



CANADA'S REMOTE ARCTIC
Nunavut featuring Ellesmere and Axel Heiberg Islands

Onboard *Ultramarine* ———

Flights between Calgary and Resolute - - - - -

your Expedition Team will keep an eye toward immersing you in the best the Arctic has to offer, including reaching Canada's most northerly islands: Axel Heiberg Island and the rarely visited Ellesmere Island, at the top of the world.

Remember that no two polar voyages are alike, since each expedition presents new opportunities and different weather and ice conditions. While this voyage has no fixed itinerary, our objective is to visit as many of the incredible highlights the season has to offer, using our extensive expertise to give you the best experience. Each day, your highly skilled Expedition Team will read the conditions and choose the best course to set, but despite their knowledge of these areas, each visit brings something new to discover. That said, our expeditions will have some elements in common, including daily Zodiac cruising, land excursions, a robust education program, a community visit and wildlife

viewing opportunities. And thanks to our onboard helicopters, you'll also discover the ultimate polar expedition experience: While polar landscapes are spectacular from the sea and on land, the view from the air is uniquely stunning. Conditions permitting, you'll enjoy an ultra-immersive flightseeing activity (short sightseeing flights around your ship and surrounding areas) unique to *Ultramarine*, giving you an awe-inspiring polar experience like no other.

While this waterway is known to European cultures as the Northwest Passage, this area has nurtured and sustained the Inuit and their predecessors who have called these shores home for almost 5,000 years. Moving through these remote landscapes you will be traveling through the ancestral homelands of this ancient culture, illuminated in person by Inuit guides onboard and ashore. Nunavut is an Inuktitut word meaning "our land" and the Nunavummiut (the

people of Nunavut) are renowned for their incredible resourcefulness, hospitality, good humor, and a deep knowledge of the land and animals that has allowed them to thrive in the far north for millennia.

Ultimately, your Expedition Team will keep its eye northward, hoping to follow in the footsteps of the lucky few polar adventurers who have transited through the famous Hell Gate to reach the top of the world, the spectacular Ellesmere Island. If conditions are right, the soaring, ominous snow-capped peaks of this polar desert will come into focus as we approach. The northernmost island in the Canadian Arctic Archipelago, Ellesmere is one of the most remote places on the planet, a land of deep fjords, jagged mountains and massive ice shelves. If we're fortunate enough to reach here, you will be among the few polar explorers to do so.



One of the goals of this expedition is to introduce guests to the unique glaciology of Axel Heiberg Island, Canada's second-most northerly island, one-third of which is covered in glaciers. A glacier that spreads out as a wide lobe as it leaves a narrow mountain valley to enter a wider valley or a plain. Axel Heiberg is home to the most dramatic and impressive Piedmont glaciers in the world. The Piedmont glacier spreads out as a wide lobe as it makes its way out of a narrow mountain valley into a wider valley or a plain. Birders will want to have their binoculars and cameras at the ready, as the island also affords opportunities for sightings of snow buntings, ptarmigans, jaegers and arctic terns, among others.

Wildlife sightings are almost guaranteed, as many of the areas we hope to explore are home to a surprising number of birds and mammals that thrive in this

challenging environment. You may see polar bears, muskoxen and several bird species, such as gyrfalcons and dovekies (little auks). If you're lucky, you may even spot the elusive narwhal or arctic wolf, though sightings of these iconic creatures in the wild are rare, even in these areas where we have the highest chances of encountering them.

Coburg Island, for instance, is a wildlife reserve for such birds as snowy owls and peregrine falcons, while the impressive vertical cliffs of Prince Leopold Island are dotted with nesting seabirds like northern fulmars and black guillemots. The sheltered shores and steep cliffs of Arctic Bay, a hamlet located off of Admiralty Inlet, provide an ideal nesting habitat for various High Arctic birds such as snow geese, thick-billed murres (Brünnich's guillemots) and kittiwakes. The region has been inhabited by Inuit and Thule cultures for almost 5,000 years.

This community is an ideal spot to go ashore and learn more about the Inuit culture, sampling the local cuisine and mingling with artists, perhaps picking up carvings or other handicrafts as a memento of your polar adventure.

Devon Island is another possible locale for wildlife encounters, as walrus, polar bears and muskoxen inhabit the area, which is also the location of the remains of a Royal Canadian Mounted Police outpost, established at Dundas Harbour in 1924 to curb foreign whaling and other activities. Nearby is a small cemetery, one of Canada's most northerly, still maintained by the RCMP to this day. Another exciting excursion your Expedition Team might offer, conditions permitting, is the opportunity to fly up to explore the Devon ice cap, one of the largest in the Canadian Arctic. History buffs will also be intrigued by the chance to visit an abandoned Hudson's



Bay Company trading post at Fort Ross, at the southern end of Somerset Island, and pay their respects to the ill-fated Franklin expedition of 1845–46 at the gravesite of three crew members on Beechey Island, one of Canada’s most significant Arctic exploration sites.

You may have the opportunity to cruise in a Zodiac along the face of an active glacier near Croker Bay and possibly even witness the wonders of calving ice, at a safe distance. Listen closely for the steady crackle and deep roars as slabs of ice break off and crash into the water below. You’ll also want to be on the lookout for the walrus that are often seen in the area.

There is no shortage of natural beauty, wildlife and history in Canada’s High Arctic. Each day, you’ll discover something new and inspiring, whether

it is admiration of the tundra flora to survive the extremely rugged environment, a rare bird species soaring overhead, a polar bear on the hunt in its natural habitat, or the ancient remains of a Thule dwelling, predecessors of the Inuit who live here today.

DAY 11 | DISEMBARK IN RESOLUTE, CANADA & FLY TO CALGARY

After disembarking in Resolute, you’ll be transferred to your charter flight to Calgary, where you’ll spend the night at your included hotel.

DAY 12 | DEPART CALGARY

Today, make your way to the airport to catch your homeward flights, or spend the day exploring this fascinating city.

EXPEDITION SPIRIT

Embracing the unexpected is part of the legacy—and excitement—of expedition travel. When traveling in extremely remote regions, your Expedition Team must consider the sea, ice and weather to guide the route and itinerary details.

This itinerary is a tentative outline of what you may experience on this voyage; please be aware that no specific itinerary can be guaranteed. By the same token, wildlife encounters as described are expected, but not guaranteed.

Your Expedition Team will use their considerable experience to seek out wildlife in known habitats, but the presence of any particular species of bird or marine wildlife is not guaranteed.





Arrival and Departure Details, and International Flight Planning



Arrival Day and Embarkation

DAY 1 — ARRIVAL AND HOTEL NIGHT IN CALGARY

You may arrive in Calgary at any time during Day 1 of the itinerary and make your own way to the included hotel, near the airport.

On arrival at the hotel, you will receive a welcome letter outlining the departure information for the following day's flight. An agent representing Quark Expeditions® will be available in the lobby of the hotel this evening to answer any questions about the charter flight(s) scheduled for the following morning.

DAY 2 — CHARTER FLIGHT AND EMBARKATION IN RESOLUTE

Your flight to the Arctic is expected to depart from Calgary to Resolute on Day 2 of the itinerary in the morning. The scheduled flight time will be communicated in your welcome letter, and you will be transferred from your hotel to check in at the airport. Upon arrival in Resolute, you will be transferred to the ship by Zodiac.

PLEASE NOTE

There is a strict luggage weight limit on checked luggage and cabin baggage on the flights between Calgary and Resolute. Should you have additional luggage, it can be stored at the hotel in Calgary. There is NO option to pay for additional luggage.

You will find in your final documents:

- › Luggage weight restrictions on charter flights.
- › Hotel information and check in time
- › Charter flight time to embarkation point
- › Embarkation plan
- › Departure charter flight time

Final Day and Departure

DISEMBARKATION IN RESOLUTE AND CHARTER FLIGHT

Your ship is scheduled to arrive in Resolute early morning and you will disembark after breakfast. After breakfast, and once the ship has anchored, you will have time to bid farewell to your Expedition Team and shipmates before taking one last Zodiac ride to shore. After disembarkation, you will be transferred to the airport for the return charter flight to Calgary.

DEPARTING FROM CALGARY

Upon arrival in Calgary, there will be a group transfer to your included post-expedition hotel. After breakfast the following morning, you may make your way to the airport to connect with your homeward flight, or stay longer if you have booked additional accommodation.

Arrival and Departure Transfers

CALGARY AIRPORT TRANSFERS

Arrival and departure transfers in Calgary are not included; if you require a transfer, you will need to arrange your own transportation. Most airports we travel in and out of have reliable taxi ranks in the arrivals area, or you can often pre-book a transfer online.

PLEASE NOTE

Included Hotel Accommodations:

Your included accommodation begins on Day 1 of your itinerary, and the specific hotel(s) will be indicated in your final voyage confirmation.





Your Ship: *Ultramarine*

NEW! ULTRAMARINE

The newest ship in our fleet, *Ultramarine* is designed to go beyond the familiar in polar exploration, to discover new places, and to immerse you in the best the region has to offer.

Equipped with two twin-engine H145 helicopters and 20 quick-deploy Zodiacs, *Ultramarine* offers the most robust portfolio of adventure activities in the industry, the most spacious suites in this category, breathtaking public spaces, excellent outdoor wildlife viewing areas, plus an innovative mix of sustainability systems that exceeds all industry standards.

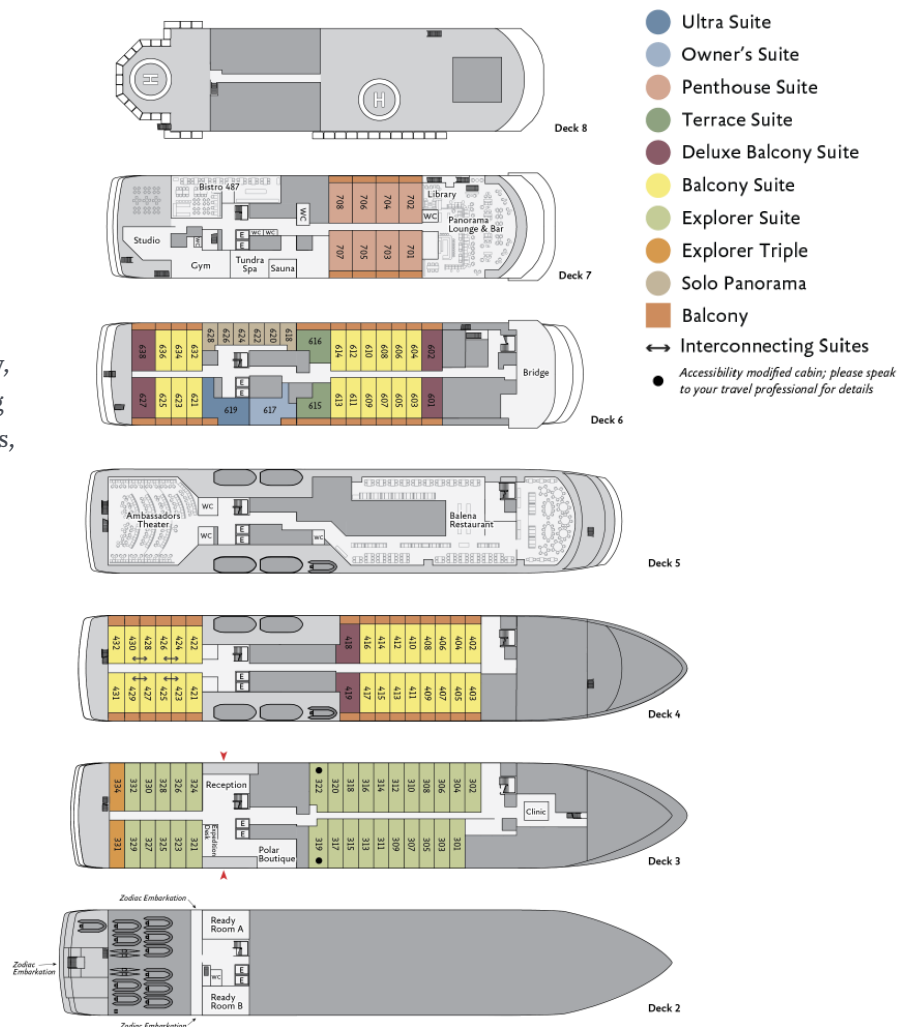
With all this and more, *Ultramarine* is perfectly positioned to deliver the ultimate polar expedition experience.

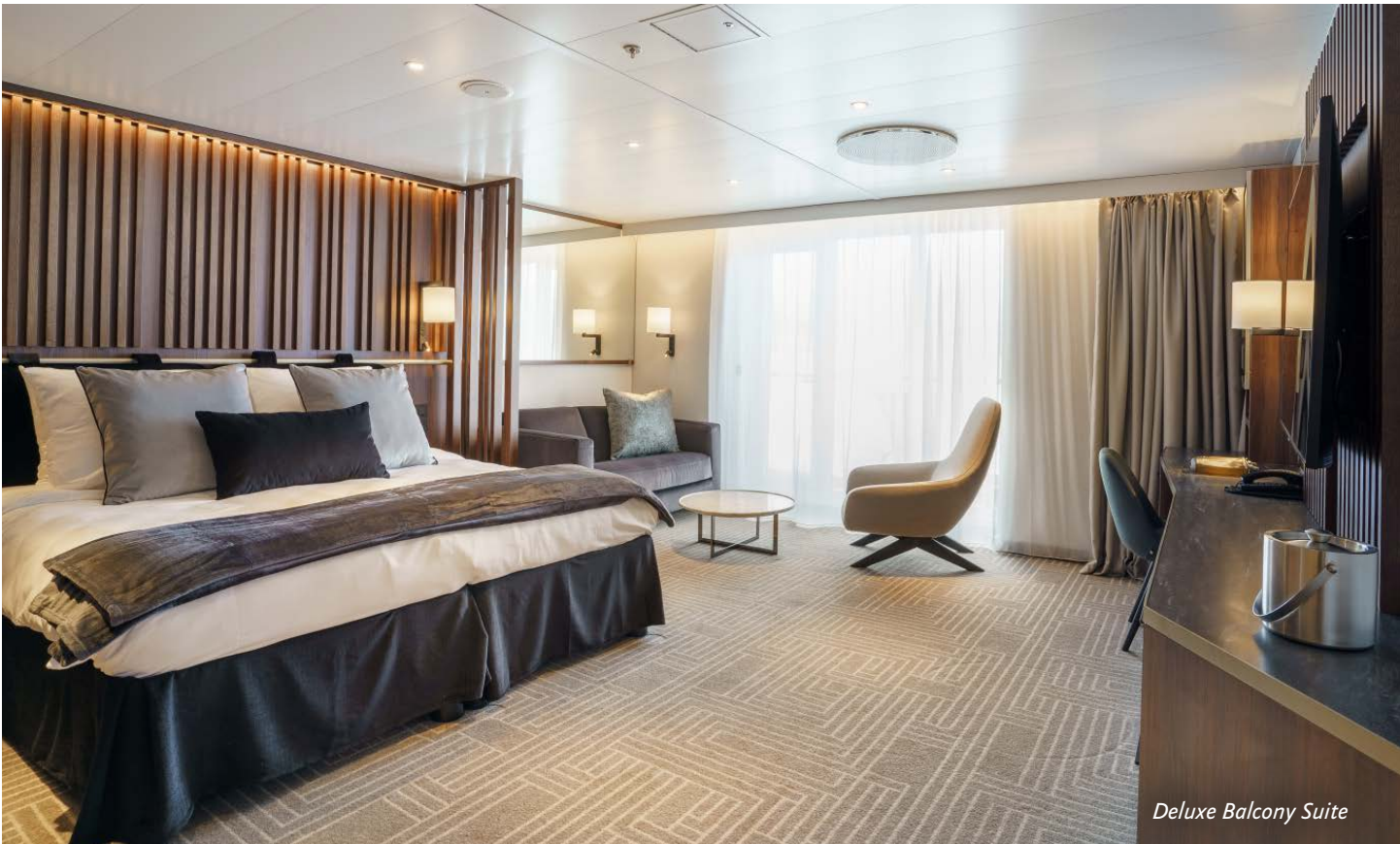
SHIP SPECIFICATIONS:

- Staff & Crew: 140
- Guests: 199
- Lifeboats: 4, fully enclosed
- Ice Class: PC6

Visit QuarkExpeditions.com to view deck plan details.

All images are artist's renderings.





Deluxe Balcony Suite



Sauna



Panorama Lounge



Fitness Center



Balena Restaurant



Included Activities

All of these activities are included in the price of your trip.



Ready for a little adventure beyond your ship? Each Quark Expeditions® voyage offers a variety of recreational activities to enhance your polar experience.

FLIGHTSEEING

While polar landscapes are spectacular from the sea, they're even more stunning from the air, a view you can enjoy while seated in one of the two twin-engine helicopters stationed on *Ultramarine*. Typically in groups of 6-9, you will experience an unforgettable aerial tour of the Arctic during a 10- to 15-minute flightseeing excursion that's included in the cost of the voyage. Additional helicopter activities may also be available for purchase on board. Please note: all helicopter operations are weather- and logistics-dependent.

ZODIAC CRUISING

Zodiacs are the workhorses of polar expeditions, taking you to places the ships can't access, allowing you to reach remote shorelines, explore shallow inlets and search for wildlife. Expedition staff make stepping in and out of them safe and comfortable, and your Zodiac drivers will provide active interpretation, making the landscape come even more alive.

HIKING

Led by experienced staff, exploring on foot is one of the best ways to appreciate the polar landscapes. Our guides are able to accommodate a range of skill levels to suit every guest.



PRESENTATIONS

Enjoy daily chats with and presentations by our world-class onboard polar experts—expedition guides, specialists, photography guides and other special guests who will introduce you to the fascinating history, biology, ornithology, glaciology and geology of the region, and much, much more.

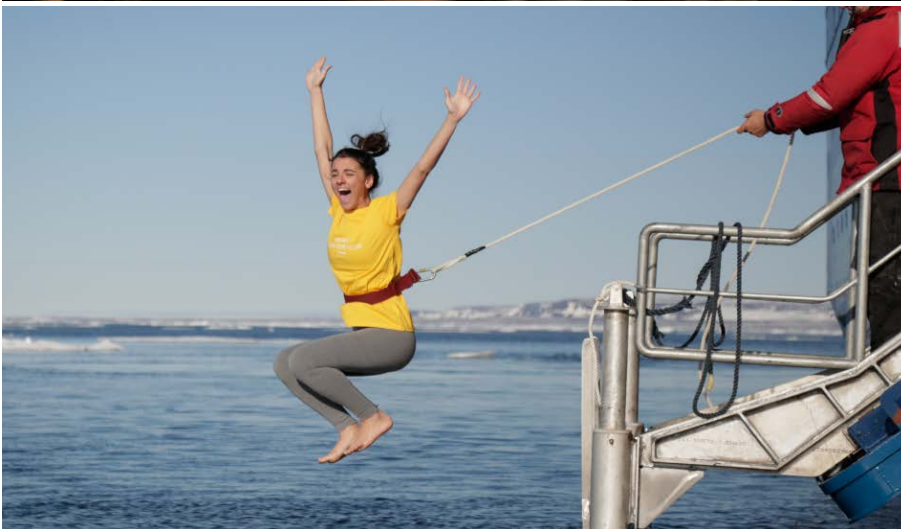
POLAR PLUNGE

This rite of passage, scheduled only once per expedition, gives you the chance to jump safely into the bracing Arctic waters under the watchful eye of our staff—and just about every single camera on board!

PHOTOGRAPHY

Documenting your voyage so you can take the memories home is a rewarding experience. Our photography guides will help you hone your skills to capture the beauty of the polar regions.

Contact your Polar Travel Adviser or your Travel Professional for more information about your Included Activities and Adventure Options, including the necessary experience, physical requirements and cost.





Adventure Options

All of these activities cost extra and should be booked in advance of your trip.



PLEASE NOTE

For all paid activities pre-booking is required. We recommend booking early as spaces fill quickly.

SEA KAYAKING

Imagine gliding across the surface of a bay in the presence of icebergs and glaciers. Our Sea Kayaking program is a great way to intimately explore your surroundings. A small group of kayakers will plan to go out multiple times per voyage as an alternative to shore landings or Zodiac cruises.

The number of opportunities to kayak is weather dependent, and will be conducted only during calm conditions. Prior kayaking experience is required, and you must be able to do a wet exit to participate. Beginners interested in kayaking should consider participating in the Paddling Excursion.

PADDLING EXCURSION




If you're interested in kayaking but would like to try something a bit less demanding than Sea Kayaking, you're the perfect candidate to sign up for a one-time paddle on our stable sit-on-top kayaks—perfect for anyone with minimal or no kayaking experience. Small groups of passengers will be taken out on calm days, with our expert guides always present to provide instruction and help you connect with the polar sea. Two groups of 10 will be pre-booked, and once successfully completed, any subsequent outings will be offered via lottery on board.



Departure Dates

Canada's Remote Arctic: Northwest Passage to Ellesmere and Axel Heiberg Islands

ULTRAMARINE

<i>Dates</i>	<i>Days</i>	<i>Start / End</i>	 Flightseeing	 Sea Kayaking	 Inuit Culinary Experience
ARCTIC 2025					
SEPT 9 - 20, 2025	12	Calgary	Included	\$	\$
ARCTIC 2024					
AUG 15 - 26, 2024	9	Calgary	Included	\$	\$
AUG 24 - SEPT 4, 2024	9	Calgary	Included	\$	\$

\$ Paid Activities



Inclusions and Exclusions

Inclusions

RATES INCLUDE:

- Leadership throughout your voyage by our experienced Expedition Leaders, including shore landings and other activities
- All Zodiac transfers and cruising as per the daily program
- All shore landings as per the daily program
- Shipboard accommodation with daily housekeeping
- All meals, snacks, soft drinks and juices on board throughout your voyage (Please inform us of any dietary requirements as far in advance as possible. Unfortunately, the ships' galleys cannot prepare kosher meals.)
- Select beer and wine during dinner; and coffee, tea and cocoa available around the clock

- Formal and informal presentations by our Expedition Team and guest speakers as scheduled
- A photographic journal documenting the expedition
- A pair of waterproof expedition boots on loan for landings and Zodiac cruising excursions
- An official Quark Expeditions® parka to keep
- Hair dryer and bathrobes in every cabin
- All miscellaneous service taxes and port charges throughout the program
- All luggage handling aboard the ship
- Emergency Evacuation insurance for all passengers to a maximum benefit of USD \$500,000 per person

Exclusions

RATES SPECIFICALLY DO NOT INCLUDE:

- Mandatory Transfer Package*
- International airfare
- Arrival and departure transfers in Calgary
- Passport and visa expenses
- Canadian eTA required for non-Canadian or U.S. visa-exempt passengers
- Government arrival and departure taxes not mentioned above
- Meals ashore unless otherwise specified
- Baggage, cancellation, interruption and medical travel insurance—strongly recommended
- Excess-baggage fees on international and domestic flights
- Mandatory waterproof pants for Zodiac cruising, or any other gear not mentioned
- Laundry, bar and other personal charges unless specified
- Phone and Internet charges (connectivity may vary by location)
- Voluntary gratuity at the end of the voyage for shipboard staff and crew
- Additional overnight accommodation
- Adventure Options not listed in Included Activities

*MANDATORY TRANSFER PACKAGE INCLUDES:

- One night's pre-expedition hotel accommodation in Calgary
- Group transfer from the Calgary hotel to the airport on Day 2
- Charter flights between Calgary and Resolute
- Group transfers between the Calgary airport and the ship
- Group transfer from Calgary airport to hotel on disembarkation day
- One night's post-expedition hotel accommodation in Calgary



Your Expedition Team

Our Expedition Leaders and their teams bring diverse expertise in subjects as varied as polar history, marine biology, glaciology, ornithology and photography. Their knowledge and enthusiasm will greatly enhance your immersion into the polar environment and further deepen your connection to the Arctic.

With over 30 years of experience bringing passengers to remote polar regions and an industry-leading staff-to-guest ratio, we know how to safely handle the unexpected. Ensuring this hard earned experience is passed on, our expedition staff receive comprehensive training in Quark Academy, which provides hands-on polar expedition training prior as part of our onboarding process as well as ongoing training for experienced staff.





Meals on Board

If there is one constant on board, it is that you'll enjoy delicious meals daily. While meal times may change due to landings and wildlife encounters, you'll always be served three well-prepared meals per day. Most dietary restrictions can be accommodated by letting us know prior to your expedition.

Balena Restaurant, the main diningroom on Deck 7 of *Ultramarine*, features tables that accommodate 2 to 10. Guests can enjoy a quiet dinner with a loved one or join a larger table of new friends. Guests will enjoy views from every seat in addition to direct access to the wraparound deck. Guests can also enjoy a meal in Bistro 487, which offers an indoor/outdoor dining experience—perfect for enjoying the polar landscapes.

Breakfasts and lunches are normally served buffet style, while dinners are served plated. À la carte meals are made at the time of your order, allowing our chefs to prepare each dish to your individual needs, ensuring you receive top-quality meals during the course of your expedition.

Soft drinks and juices are available during meals and when the bar is open; beer and wine are served with dinner; and coffee, tea and water stations are available around the clock—all included in the cost of your package. Spirits, premium wines and champagne are available at extra cost which can be billed to your shipboard account. The well-stocked bars on the ship are open to enjoy with your fellow shipmates in late morning, afternoon and evening.





Possible Excursions

When traveling in extremely remote regions, your Expedition Team must consider the sea, ice and weather to guide the route and itinerary details. The following sites are a sample of what you may experience on your expedition, whether by ship, Zodiac cruise, or shore landing.

Canada

ADMIRALTY INLET

Situated on Baffin Island's most northerly shore is Admiralty Inlet, whose steep coastline soars 1,500 feet (460 meters) above sea level. Just off the inlet's northeastern shore lies Arctic Bay, an Inuit community we partner with to coordinate authentic experiences that highlight the best this area has to offer. Narwhals and polar bears are known to frequent the fjord.

ARCTIC BAY

This picturesque and remote community maintains strong ties to the land and sea, as its Inuit inhabitants have lived as

nomadic hunters in this region for almost 5,000 years. The protective high hills and sheltered shores of this hamlet make for an ideal nesting habitat for various Arctic birds, including thick-billed murres, kittiwakes, ivory gulls and Ross's gulls. Seals, narwhals and bowhead whales make their home in these waters.

AXEL HEIBERG ISLAND

Most famous for its mummified forest dating back over 30 million years, the island is home to several bird species, including arctic terns, geese, jaegers, snow buntings and ptarmigans. It's named after Axel Heiberg, the sponsor of the 1897-1902 Norwegian expedition led by Otto Sverdrup to explore and name uncharted areas of the Arctic. Today, the island is the location of one of the longest-operating seasonal field research facilities (est. 1960) in the High Arctic. If we're able to make landing here, we will take precautions to preserve this important geological site.



BEECHEY ISLAND

Named after Frederick William Beechey, an explorer with the Royal Navy, this is one of Canada's most important Arctic sites and has been deemed a Canadian National Historic Site. During the Franklin expedition of 1845-46, two of Franklin's ships, HMS *Erebus* and HMS *Terror*, anchored here with perilous results. Three of Franklin's crew died here and are buried at marked gravesites.

COBURG ISLAND

A well-known nesting ground, Coburg Island is a wildlife reserve with a diverse avian community. Greater snow geese, snowy owls, peregrine falcons and gyrfalcons thrive in the protected environment at certain times of the year.

CROKER BAY

On the south coast of Devon Island is Croker Bay. A glacier here actively calves off chunks of ice, creating a birthplace for icebergs. The bay was a popular stop

during the 1800s, when a path to the Pacific (the Northwest Passage) was at the forefront of Arctic exploration.

DEVON ISLAND

This is the largest uninhabited island in the world. Marking the northern side of Lancaster Sound, this desert island is so cold and dry that NASA and other organizations conduct research here for future missions to Mars. The Inuktitut name, Tallurutit means "tatoos on the chin" referring to the similarity of the geological features of the area to an Inuit woman's traditional chin tattoos.

DUNDAS HARBOUR

Located on Devon Island, there are remains of a Royal Canadian Mounted Police post here, dating back to 1924. Historically, this area has been settled for more than 3,000 years by Inuit and pre-Inuit cultures. Be alert for wildlife, as walrus, polar bears and muskoxen inhabit the area.

ELLESMERE ISLAND

The most northerly point of land in Canada, this island at the top of the world features dramatic glacier-capped peaks that soar over 8,200 feet (2,500 meters). It is the third-largest island in the country and the 10th largest in the world. Those fortunate to visit Ellesmere will have achieved one of the most elusive landmarks in all of polar exploration.

FORT ROSS

In 1937, the Hudson's Bay Company established a trading post, named Fort Ross, on the southern coast of Somerset Island. Due to the harsh conditions and isolation of the post, it was closed in 1948. The store and manager's house still stand.

GRISE FIOR

The Inuktitut name for this Ellesmere Island hamlet means "place that never thaws." From April to August, the residents of Canada's most northerly Inuit community experience continuous daylight.



HELL GATE

Known as the gateway to the mysterious Norwegian Bay, this narrow waterway runs alongside North Kent Island and sits between two of Canada's most beautiful islands: Ellesmere Island and Devon Island. Transiting the channel is a rite of passage for any High Arctic explorer, as passing through it takes you to one of the most spectacular yet seldom-visited parts of our planet, Ellesmere Island. A natural convergence, channeling currents, drifting ice and marine life between its shores, Hell Gate supports a higher concentration of wildlife, including polar bears and northern fulmars, compared with the surrounding areas.

PRINCE LEOPOLD ISLAND

Impressive vertical cliffs surround part of this small island. This creates an ideal environment for nesting seabirds, and they nest here in vast numbers—more than 300,000 strong! Thick-billed murrelets, black guillemots and northern fulmars are most commonly seen here.

RESOLUTE

One of Canada's most northern settlements, Resolute was formed by forceful relocation of Inuit from northern Quebec by the Canadian government in 1953, during the Cold War. Today, it's also a jumping off point for high Arctic research. It has everything from a grocery store and cable TV to a school and a couple of hotels. About 200 people live in Resolute throughout the year, where hunting and logistical support to research, mining and tourism contribute to the community's economy.

WINTER HARBOUR, MELVILLE ISLAND

Winter Harbour is the overwintering site of legendary explorer Sir William Parry's famous 1819-20 expedition to find the Northwest Passage. The first recorded voyage to this region, it predates the later exploration of Sir John Franklin and others by over 20 years! The site is home to a large sandstone rock known as Parry's Rock. Designated a National Historic Site of Canada in 1930, this natural monument bears an inscription by the ship's surgeon of the expedition's vessels and their captains, as well as a plaque marking when Canada took possession of the Arctic Archipelago.

EXPEDITION SPIRIT

Embracing the unexpected is part of the legacy—and excitement—of expedition travel. When traveling in extremely remote regions, your Expedition Team must consider the sea, ice and weather to guide the route and itinerary details. This itinerary is a tentative outline of what you may experience on this voyage; please be aware that no specific itinerary can be guaranteed. By the same token, wildlife encounters as described are expected, but not guaranteed. Your Expedition Team will use their considerable experience to seek out wildlife in known habitats, but the presence of any particular species of bird or marine wildlife is not guaranteed.



What to pack on your Arctic expedition

BY SEA AND AIR

All transfers ship to shore, helicopter flights and Zodiac/ship cruising.

- Waterproof pants (mandatory for every Zodiac and helicopter ride)
- Base-layer wool or synthetic top*
- Base-layer wool or synthetic bottom*
- Mid-layer warm or fleece top*
- Mid-layer warm or fleece bottom*
- Warm hat that covers ears (bring an extra)
- Scarf, buff, or other face protection
- Warm wool or synthetic socks (keep a dry pair in your bag, and bring extras for layering)
- Waterproof gloves or mitts (bring an extra, lighter pair for hiking)
- Glove liners*
- Hand and feet warmers*
- Binoculars
- Polarized sunglasses with UV protection (consider bringing an eyewear retainer: string/clip etc.)
- Ski goggles (for Zodiac cruising on snowy or windy days)
- Waterproof, lightweight backpack or dry sack and/or rain sleeve for camera or a waterproof phone case (to keep camera & gear dry)

*recommended layering depending on the conditions of the day and reflecting your personal thermo-regulation comfort levels.

BY LAND (Shore Excursions and Hiking)

In addition to the gear requirements (as above) mandatory for the transit from ship to shore, it is recommended to bring:

- Hat, buff or scarf (for wind and weather protection)
- UV protection (sun hat, polarized sun glasses, sun block, lip balm etc.)
- Collapsible walking sticks for hikes (if required)
Quantities are available to borrow on every vessel
- Additional reusable (thermos-regulating) water bottle (in addition to the reusable collapsible water bottle provided)

WHAT TO BRING! Packing for the Polar Regions doesn't have to be daunting, and to make it easier for you, all Quark Expeditions voyages include a Quark parka to keep, and a loan of insulated waterproof boots. Additional suggested items include:

TO WEAR ON BOARD

- The complimentary Quark 3-in-1 Parka provided on board is designed with a waterproof shell that can be worn out on deck, and a removable liner that you can wear to stay comfortable indoors)
- Comfortable casual clothing like lighter shirts, pants or jeans, etc. (in case the ship gets warm)
- Comfortable non-slip closed-toed, heelless shoes (flip flops, sandals or slip-on shoes should not be worn on board due to safety concerns)
- Workout attire (for the fitness center and other indoor activities)
- Swimsuit (for the Polar Plunge! Some vessels may also have a pool, hot tub, sauna and/or steam room. See your ship book for details.)

Just a reminder: No formal evening wear required on our voyages but if you would like to bring something a little more dressy for the Captain's welcome and farewell cocktails you may certainly do so!

ADDITIONAL ITEMS

- Passport, visas, immunization records, travel documents, etc. as required
- Camera gear—complete with charger, storage medium, transport and cleaning kit (lens cloth etc.) and extra batteries
- Reusable waterproof bags or plastic bags with zippers (to keep small items organized and cameras dry)
- Voltage converters and plug adapters (see ship book for details)
- Seasickness, indigestion, headache, or other medications
- Earplugs and eye masks for sleeping
- Moisturizer for face and hands (skin dryness due to wind and temperature changes)
- Credit Card & Small amount of local currency (see pre-departure book for more details)

- › To view our packing checklist online, visit: [QuarkExpeditions.com/What-to-Pack/Arctic](https://www.quarkexpeditions.com/What-to-Pack/Arctic)
- › Related topics are covered on our Frequently Asked Questions page: [QuarkExpeditions.com/Frequently-Asked-Questions](https://www.quarkexpeditions.com/Frequently-Asked-Questions)



Scan this QR code or [click here](#) to watch our video on what to pack before you go!

WEATHER CONDITIONS & TEMPERATURES

Polar weather is extremely variable; temperatures may hover around the freezing mark and winds can be strong. The extended daylight warms sheltered areas so that you may sometimes find it warm enough for t-shirts. However, you may encounter rain, snow squalls, fog and white-outs during an expedition and should be ready for any conditions.



The Leader in Polar Adventures

TO BOOK YOUR NEXT ADVENTURE

Contact your **Travel Professional**
or a **Quark Expeditions® Polar Travel Adviser**

TOLL FREE AND LOCAL NUMBERS:

North America (Toll Free) **1 888 332 0008**

U.K. Tel **+44 203 514 2712**

U.K. (Toll Free) **0 808 120 2333**

Australia Tel **+61 2 72580333**

Australia (Toll Free) **+61 1800 953518**

France Tel **+33-1 80 14 01 05**

France (Toll Free) **08 05 08 66 46**

QuarkExpeditions.com

Photos captured with a telephoto lens from a responsible distance, following regulatory/AECO guidelines.

PHOTO CREDITS: *(over all Expedition Brochures for the Arctic 2025 season):*

Acacia Johnson; David Merron; Nicky Souness; Samantha Crimmin; Sam Edmonds; Michelle Sole; Cindy Miller Hopkins; Sue Flood; Hugo Perrin; Peter Lindstrom; Visit Greenland; Nicolas Singh; Rogelio Espinosa; Grange Productions; Fokus Productions; Adobe Stock; iStock

EXPEDITION BROCHURE
September 6, 2023