



The Leader in Polar Adventures

ANTARCTIC 2024/25

ANTARCTIC EXPLORER

Discovering the 7th Continent
with flights from Buenos Aires



ULTRAMARINE

DESIGNED TO GO BEYOND

Contents

1	Overview
2	Itinerary
4	Arrival and Departure Details
6	Your Ship: <i>Ultramarine</i>
9	Included Activities
9	Adventure Options
11	Departure Dates
12	Inclusions and Exclusions
13	Your Expedition Team
14	Extend Your Trip
15	Meals on Board
16	Possible Excursions
20	Packing Checklist



Overview

12-day Antarctic Explorer: Discovering the 7th Continent

Antarctica is an incredible destination with the power to transform those who are fortunate enough to experience its many natural wonders. At Quark Expeditions, we've been delivering transformational polar experiences for over three decades, and in that time we've realized that the more personalized an expedition is, the more enriching the experience will be. That's why we've designed this guide: to help you plan your perfect expedition to the 7th continent.

We've been creating transformational polar experiences in Antarctica for over three decades. In that time, we've realized that personalized expeditions—that match your travel goals and tastes—are more enriching. That's why we're offering this 12-day *Antarctic Explorer: Discovering the 7th Continent* itinerary that enables guests to maximize the helicopter experiences available on our newest ship, *Ultramarine*. Our ultimate goal is to help you plan your perfect polar expedition.

Antarctica has been inspiring explorers for centuries—now it's your turn. Our expedition team—the best in the Polar Regions—will do everything possible to ensure you have the expedition of a lifetime, and that you do it your way. We're excited to host you on your unforgettable adventure! Please feel free to reach out to our team of Polar Travel Advisers, who are happy to answer your questions and provide assistance at any time.



EXPEDITION IN BRIEF

-  Arrive in Buenos Aires, Argentina, and enjoy the tango capital of the world
-  Explore highlights of the Antarctic Peninsula
-  Enjoy flightseeing on *Ultramarine's* two twin-engine helicopters
-  Enjoy presentations on wildlife, history, glaciology and geology by our onboard polar experts
-  Observe abundant wildlife, such as penguins, seals and whales
-  Explore Antarctica on an optional paddling excursion.



Itinerary

DAY 1 | ARRIVE IN BUENOS AIRES, ARGENTINA

Upon arriving in this splendid city, known for its vibrant Argentinian culture, European architecture and cosmopolitan vibe, you will independently transfer to your group hotel (pre-expedition hotel night included in mandatory transfer package).

DAY 2 | FLY TO USHUAIA AND EMBARK

After an early breakfast at the hotel, the group will transfer to the airport and board our private charter flight to Ushuaia, Argentina.

Upon arrival, you will be transferred from the airport to a central downtown location to explore this quaint port town on your own before making your way to the designated meeting spot pier.

After a late afternoon embarkation, you will sail along the historic Beagle Channel,

which transects the Tierra del Fuego archipelago in the extreme south of South America. Excitement builds in anticipation of your next stop: the Antarctic!

DAYS 3 & 4 | CROSSING THE DRAKE PASSAGE

The unpredictable and exciting Drake Passage is an adventure unto itself. While being well taken care of by our expert onboard staff and leaders, you'll have plenty of time to gaze out at the ocean, take pictures of seabirds swooping around the ship, and get to know your Expedition Team and fellow travelers.

DAYS 5-9 | SOUTH SHETLAND ISLANDS AND ANTARCTIC PENINSULA

Once the Drake Passage is left in our wake and the South Shetland Islands come into view, your Antarctic adventure truly begins. You will begin to appreciate why this region has long captivated the



ANTARCTIC EXPLORER Discovering the 7th Continent

— On board the *Ultramarine*
- - - Flights to/from Buenos Aires

attention of explorers and travelers alike. On every visit to Antarctica, we witness something new or unexpected, which means your expedition will be unlike any other—a unique, personal experience.

Each day, you will take Zodiac excursions from the ship to explore local bays, channels and landing sites. With wildlife always at the forefront of our minds, you will visit penguin rookeries, scout for humpback and minke whales, and search for a number of southern seal species, including the cunning leopard seal.

The majesty of the Antarctic Peninsula's mountains will enchant as you hike snowy pathways to vantage points offering panoramic views of your surroundings. You will discover that Antarctica is a land of extremes. At one moment you'll be overcome with a feeling

of complete isolation and silence, and the next you'll be inspired by nature as a calving glacier crashes into a brilliant blue sea or a penguin waddles by to inspect your footwear.

Amid the serene silence of Antarctica, noisy interludes—such as penguins squabbling over prized pebbles—become indelible memories.

Each day will be different, carefully crafted by your Expedition Team to inspire and educate you about this wonderful part of the world.

DAYS 10 & 11 | CROSSING THE DRAKE PASSAGE

The journey back across the Drake Passage provides a final opportunity to enjoy the invigorating Southern Ocean air. Spend time on the deck watching for

seabirds and scouting for whales, enjoy presentations by your Expedition Team, and celebrate the experiences you've shared exploring the remarkable world of Antarctica.

DAY 12 | DISEMBARK IN USHUAIA AND FLY TO BUENOS AIRES

You will arrive in Ushuaia in the morning and disembark after breakfast. You will then make your way towards your group charter flight to Buenos Aires.



EXPEDITION SPIRIT

Embracing the unexpected is part of the legacy—and excitement—of expedition travel. When traveling in extremely remote regions, your Expedition Team must consider the sea, ice and weather to guide the route and itinerary details. This itinerary is a tentative outline of what you may experience on this voyage; please be aware that no specific itinerary can be guaranteed. By the same token, wildlife encounters as described are expected, but not guaranteed. Your Expedition Team will use their considerable experience to seek out wildlife in known habitats, but the presence of any particular species of bird or marine wildlife is not guaranteed.



Arrival and Departure Details

As you prepare for your journey, you may be interested in your arrival and departure details. Since international air transportation is not included in the cost of your expedition, you have some flexibility in planning your flights. Looking to extend your adventure beyond your polar expedition? On page 14, learn how to add on a pre- or post-expedition stop—or both!—in your gateway city.

Arrival Day and Embarkation

ARRIVING IN BUENOS AIRES

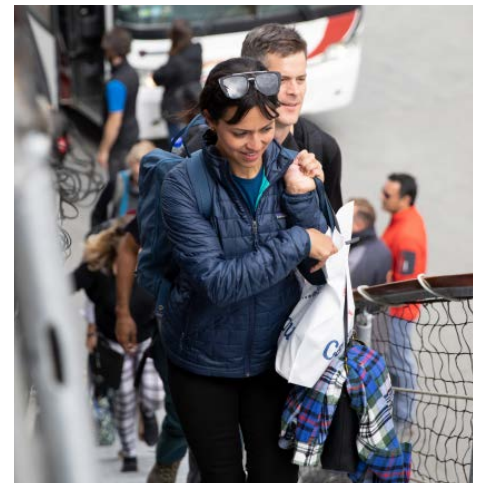
Upon arrival in Buenos Aires, you will make your way to the included group hotel. A presentation room will be open from 12 pm to 8 pm for luggage weighing and tagging. A Quark Expeditions representative will be available to answer your questions and give information about the next day's flight and ship embarkation. After an early breakfast the following morning, your group will transfer to the airport and board our private charter flight to Ushuaia, Argentina, the southernmost city in the world.

USHUAIA AND EMBARKATION

In Ushuaia your mandatory transfer package will provide some free time to explore this quaint port town, and also (when flight schedules allow) a tour of Tierra del Fuego National Park. Note: The tour (if available) may take place on either the embarkation or disembarkation day.

EMBARKATION

We will transfer the group to the ship for embarkation around 4 pm.



PLEASE NOTE

There is a strict luggage limit of 50 lbs (23kg) checked luggage and 17 lbs (8 kg) cabin baggage on the flights between Buenos Aires and Ushuaia. Should you have additional luggage, it can be stored at the hotel in Buenos Aires. There is NO option to pay for additional luggage.

Final Day and Departure

DISEMBARKATION IN USHUAIA

The ship is scheduled to arrive back at the pier in Ushuaia between 7 am and 8 am. After breakfast you will bid farewell to your Expedition Team before completing your disembarkation. This process takes approximately one hour.

DEPARTING FROM BUENOS AIRES

Upon arrival in Buenos Aires, you may be able to connect directly with your homeward flight, as we will land at Ministro Pistarini International Airport (also known as Ezeiza International Airport, EZE) at 5 pm. Please be sure to allow at least three hours between our charter arrival and your international departure, however we recommend that you do not book departing flights from the international airport before 9 pm.

If your plans will take you onward in South America, please check your flight schedule to confirm your connection before booking. Upon arrival in Buenos Aires, you may need to transfer from

the international airport (EZE) to the domestic airport, Jorge Newbery (also known as Aeroparque, AEP), which is located about a one-hour drive away under normal traffic conditions. If you must transfer between airports on the final day of the voyage, you can choose to use the efficient airport shuttle service, Manuel Tienda León, or take a *remis* (a pre-paid taxi booked inside the airport). If you prefer, your Polar Travel Adviser can also arrange for a private transfer. As traffic can add time to the commute, we recommend that you allow at least five hours between flights arriving and departing from the different airports in Buenos Aires to allow for transit, check-in, and security clearance.

For the absolute safest travel plans, we recommend that you book an extra hotel night in Buenos Aires between flights.

Included Hotel Accommodations

Your included accommodation begins on Day 1 of your itinerary. The specific hotel will be indicated on your final voyage confirmation. If you are arriving prior to Day 1 of your expedition or are staying after the disembarkation day and would like help booking a pre- or post-stay, please contact your preferred travel agent or Quark Expeditions for hotel options. As accommodation space is limited, you are encouraged to request any extra nights as early as possible.

Arrival and Departure Transfers

BUENOS AIRES AIRPORT TRANSFERS

Arrival and departure transfers in Buenos Aires are not included; however, a Polar Travel Adviser can arrange them for you.

We request that you provide your flight details to Quark Expeditions at least 30 days prior to traveling.



PLEASE NOTE

Weather conditions may occasionally delay our arrival, and airline schedule changes have also been known to occur in Argentina. Booking flexible tickets is always encouraged, as we cannot be held responsible for delays due to unforeseen circumstances.





Your Ship

ULTRAMARINE

The newest ship in our fleet, *Ultramarine* is designed to go beyond the familiar in polar exploration, to immerse guests in parts of the Polar Regions where few humans have ever set foot.

Equipped with two twin-engine helicopters and 20 quick-launching Zodiacs, *Ultramarine* offers the most off-ship adventure activities in the industry. Guests can enjoy two restaurants (Balena and Bistro 487), Tundra Spa, a sauna-with floor-to-ceiling windows, spacious suites and abundant wildlife-viewing spaces. *Ultramarine* also features advanced sustainability systems—which exceed all industry standards.

Ultramarine is perfectly designed to deliver the ultimate polar expedition experience.

SHIP SPECIFICATIONS:

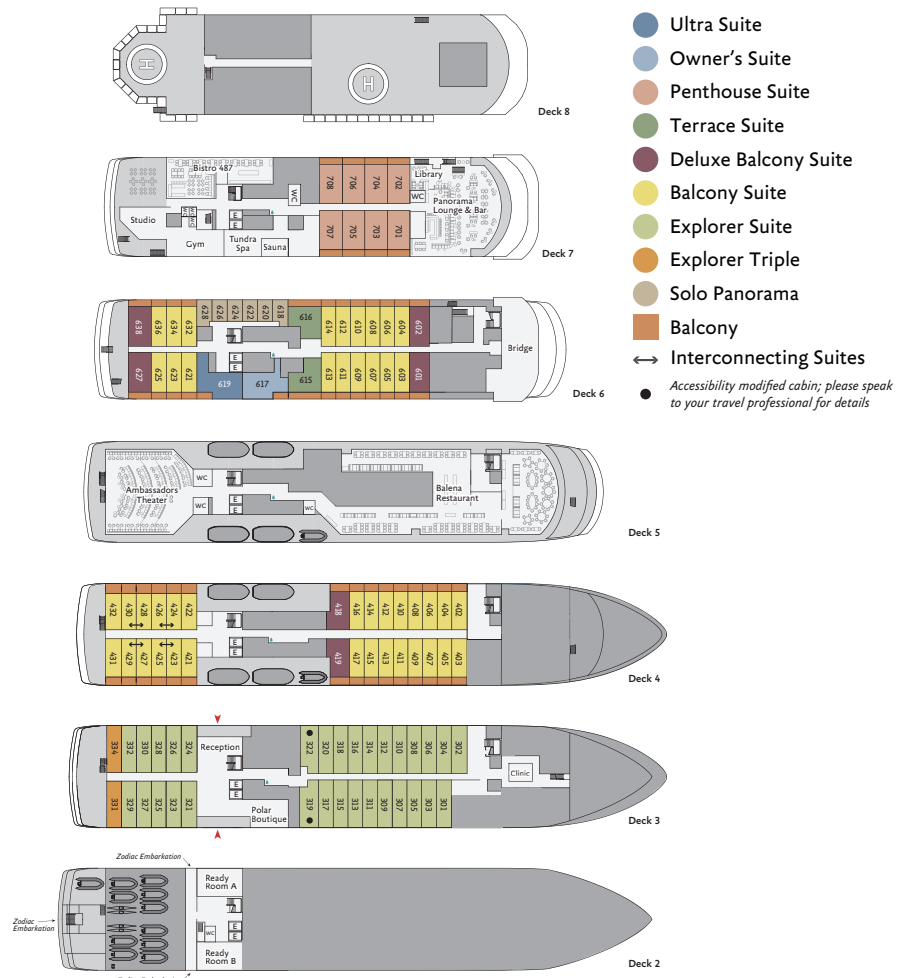
Staff and Crew: 140

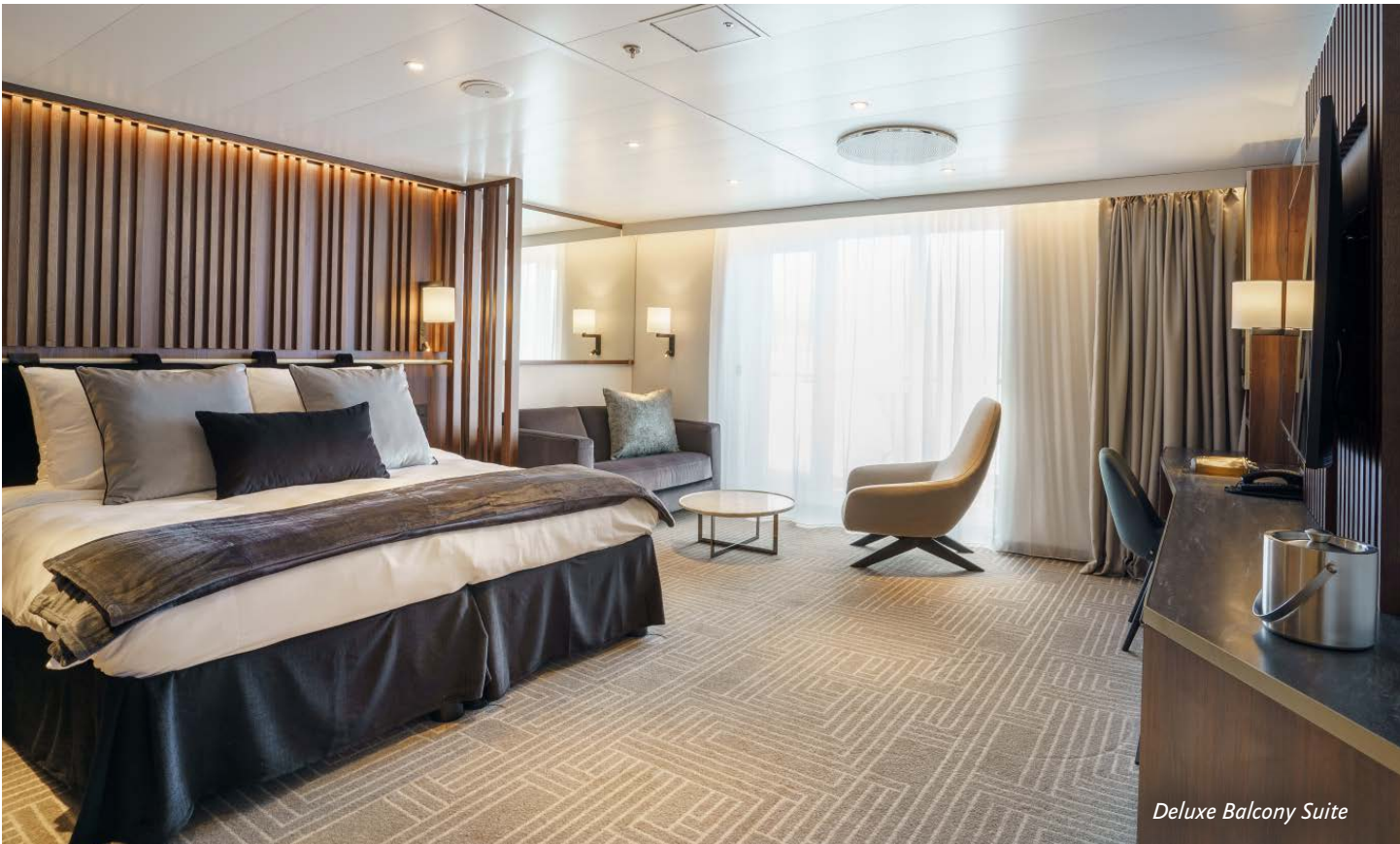
Guests: 199

Lifeboats: 4, fully enclosed

Ice Class: PC6

Visit QuarkExpeditions.com to view deck plan details.





Deluxe Balcony Suite



Sauna



Panorama Lounge



Fitness Center



Balena Restaurant



Included Activities

These are included in your trip package.

Ready for a little adventure beyond your ship? Each Quark Expeditions voyage offers a variety of immersive off-ship activities to enhance your polar experience.

FLIGHTSEEING

While polar landscapes are spectacular from the sea, they are even more striking from the air. On board *Ultramarine* you will experience remarkable aerial perspectives on a 10- to 15-minute flightseeing excursion included in the cost of your voyage.

ZODIAC CRUISING

Zodiacs—rugged inflatable watercraft—are the workhorses of polar expeditions, taking you to places the ships can't access, allowing you to reach remote shorelines, explore shallow inlets and search for unique wildlife. Expedition staff make stepping in and out of them safe and comfortable, and your Zodiac drivers will provide active interpretation, making the landscape come even more alive.

HIKING

Hiking in Antarctica is free-form and supervised by our expert staff, who set out a perimeter or paths at each landing site within which you are free to explore. While you hike, staff will be available to enhance your experience by answering questions about the wildlife, history and geography of the area.

PRESENTATIONS

Enjoy daily chats with and presentations by our world-class onboard polar experts—expedition guides, specialists, photography guides and other special guests who will introduce you to the fascinating history, biology, ornithology, glaciology and geology of the region, and much, much more.

POLAR PLUNGE

This rite of passage, scheduled only once per expedition, gives you the chance to jump safely into the bracing Antarctic waters under the watchful eye of our staff—and just about every single camera on board!

PHOTOGRAPHY

Documenting your voyage so you can take the memories home is a rewarding experience. Our photography guide will help you hone your skills to capture the beauty of the polar regions.

More information about your Included Activities and Adventure Options, including the necessary experience, physical requirements and cost, is available by contacting your Polar Travel Adviser or travel professional.





Adventure Options

These activities cost extra and must be booked in advance of your trip.



SEA KAYAKING

Imagine gliding across the surface of a bay in the presence of icebergs and glaciers. Our Sea Kayaking program is a great way to intimately explore your surroundings. A small group of kayakers will plan to go out multiple times per voyage as an alternative to shore landings or Zodiac cruises.

The number of opportunities to kayak is weather dependent, and will be conducted only during calm conditions. Prior kayaking experience is required, and you must be able to do a wet exit to participate. Beginners interested in kayaking should consider participating in the Paddling Excursion.



STAND-UP PADDLEBOARDING

Combining a surfboard with a kayak, stand-up paddleboarding will give you a very personal and unique perspective on Antarctica. Conducted in small groups—in calm bays and harbors, in good weather conditions—and accompanied by a safety Zodiac, one-time stand-up paddleboarding excursions can be pre-booked into one of two priority groups. Any subsequent excursions can be booked on board, and groups will be assigned via a lottery.

PADDLING EXCURSION

If you're interested in kayaking but would like to try something a bit less demanding than Sea Kayaking, you're the perfect candidate to sign up for a one-time paddle on our stable sit-on-top kayaks—perfect for anyone with minimal or no kayaking experience.

PLEASE NOTE

Pre-booking is required for all paid activities. We recommend booking early, as spaces fill quickly. Please see your pre-departure guide for a list of provided gear for each Adventure Option.



EXCLUSIVE HELI-LANDING

Imagine setting foot in an area of the Antarctic that can only be safely accessed by helicopter. With a small group of fellow passengers and expert guides, you'll board one of *Ultramarine's* two twin-engine helicopters to soar off to an exclusive polar site where no ships can navigate. Expect stunning bird's-eye views during your flight, and then, upon arrival, simply sit back, relax and take in the splendor of the Antarctic from "the best seat in the house": glacial amphitheaters, breath-taking summits, and more. At your landing, you'll have time to relax and quietly reflect on the beauty of your polar surroundings, after which you'll be picked up by the helicopters in the same location and returned to *Ultramarine*.

Each heli-landing experience is uniquely curated by our expedition team, taking conditions, regulations and location capacity into consideration.

PLEASE NOTE


Pre-booking is required for all paid activities. We recommend booking early, as spaces fill quickly. Please see your pre-departure guide for a list of provided gear for each Adventure Option.



Departure Dates

Antarctic Explorer: Discovering the 7th Continent

ULTRAMARINE

Dates	Days	Start / End	Adventure Options					Included
								
ANTARCTIC 2023.24								
NOV 16 - 27, 2024	12	Buenos Aires	\$	\$	\$	\$	Included	
NOV 26 - DEC 7, 2024	12	Buenos Aires	\$	\$	\$	\$	Included	
DEC 6 - 17, 2024	12	Buenos Aires	\$	\$	\$	\$	Included	
JAN 18 - 29, 2025	12	Buenos Aires	\$	\$	\$	\$	Included	
FEB 19 - MAR 2, 2025	12	Buenos Aires	\$	\$	\$	\$	Included	



Inclusions and Exclusions

Inclusions

RATES INCLUDE:

- Leadership throughout your voyage by our experienced Expedition Team, including shore landings and other activities
- An official Quark Expeditions parka to keep
- All Zodiac transfers and cruising as per the daily program
- All shore landings as per the daily program
- Shipboard accommodation with daily housekeeping
- All meals, snacks, soft drinks and juices on board throughout your voyage. Please inform us of any dietary requirements as far in advance as possible. Unfortunately, the ships' galleys cannot prepare kosher meals.
- Select beer and wine during dinner; and coffee, tea and cocoa available around the clock

- Formal and informal presentations by our Expedition Team and guest speakers as scheduled
- A photographic journal documenting your expedition
- A pair of waterproof expedition boots on loan for landings and Zodiac cruising excursions
- Hair dryer and bathrobes in every cabin
- All miscellaneous service taxes and port charges throughout the program
- All luggage handling aboard the ship
- Emergency Evacuation insurance for all passengers to a maximum benefit of USD \$500,000 per person
- One 10- to 15-minute helicopter flightseeing excursion (weather and logistics permitting)

Exclusions

RATES SPECIFICALLY DO NOT INCLUDE:

- Mandatory Transfer Package*
- International airfare
- Passport and applicable visa expenses
- Government arrival and departure taxes not mentioned
- Meals unless otherwise specified
- Baggage, cancellation, interruption and medical travel insurance—strongly recommended
- Excess-baggage fees on international and domestic flights
- Mandatory waterproof pants for Zodiac landing and cruising excursions, or any other gear not mentioned
- Laundry, bar, spa services and other personal charges, unless specified
- Phone and Internet charges (connectivity may vary by location)
- Voluntary gratuity at the end of the voyage for expedition staff and shipboard crew
- Additional overnight accommodation
- Arrival and departure transfers, except where explicitly stated
- Adventure Options not listed in Included Activities

*MANDATORY TRANSFER PACKAGE INCLUDES:

- One night's pre-expedition hotel accommodation in Buenos Aires with breakfast (Note: The number of guests per room is the same as cabin occupancy on the ship. Due to limited availability, travelers who reserve a suite on board are accommodated in standard rooms at the hotel. Triple rooms may not be available.)
- Group flight departing from Buenos Aires' domestic airport (Aeroparque/AEP) to Ushuaia, and returning to Buenos Aires' international airport (Ezeiza/EZE)

- Group transfer from hotel to airport in Buenos Aires
- Group transfer from Ushuaia airport to the ship, and return (Note: Transfer on arrival in Buenos Aires from airport to hotel at the beginning of the journey is not included. Please make your way to the included hotel.)
- Combined airport transfer and express bus tour of Tierra del Fuego National Park after disembarkation in Ushuaia

PACKAGE PRICE: \$995 USD

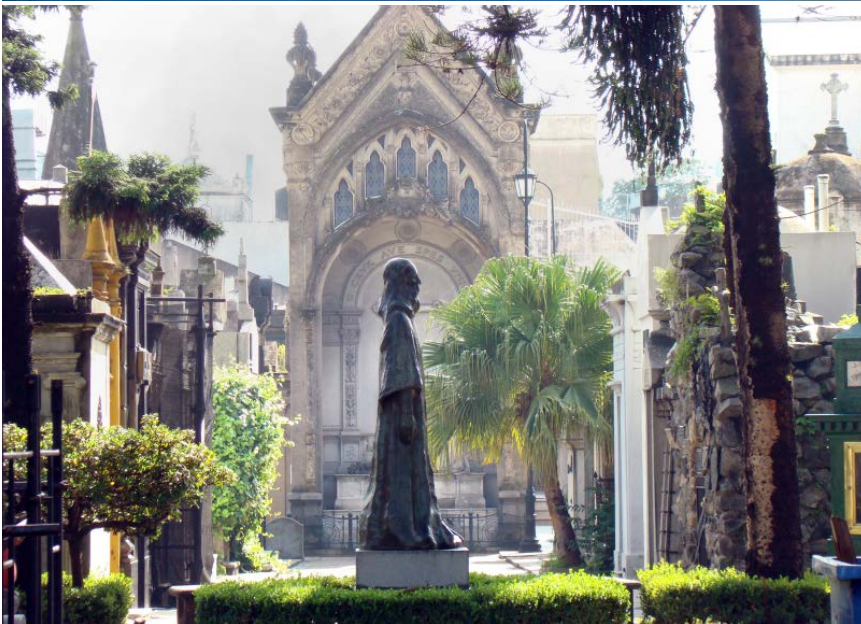


Your Expedition Team

Our Expedition Leaders—the best in the industry—and their teams possess diverse expertise in subjects as varied as polar history, marine biology, glaciology, ornithology and photography. Their knowledge and enthusiasm will greatly enhance your immersion into the polar environment and further deepen your connection to the Antarctic.

With over 30 years of experience bringing passengers to remote Polar Regions and an industry-leading staff-to-guest ratio, we know how to safely handle the unexpected. Ensuring this hard-earned experience is passed on, all our expedition staff undergo comprehensive training at Quark Academy, which provides hands-on polar expedition training prior to any staff member's first voyage, as well as ongoing training for experienced staff.





Extend Your Trip

PRE- AND POST-EXPEDITION TRIP EXTENSIONS

Since you're traveling such a long way, you may want to spend extra time in Buenos Aires. We have a variety of pre- and post-expedition packages in this captivating city, known as the tango capital of the world. Enjoy an extensive city tour, take in a tango show and explore the unique neighborhoods of Recoleta, Palermo and San Telmo. Savor Argentine barbecue at a steakhouse (*parrilla*), then stroll the tree-lined boulevards and marvel at the historic architecture. Take an extended tour from Buenos Aires to Iguazú Falls, and, if you're daring, walk the catwalks over the falls.

To discover the best options for extending your adventure, get in touch with your Travel Professional or a Polar Travel Adviser for seamless, worry-free booking of all trip extensions.

FROM TOP: Iguazú Falls; Recoleta Cemetery; Argentinean asado (barbecue)



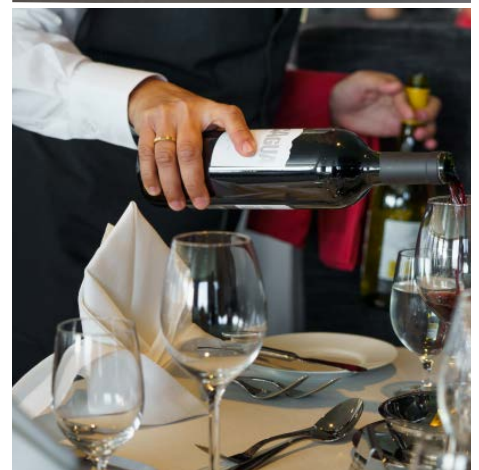
Meals on Board

If there is one constant on board, it is that you'll enjoy delicious meals daily. While meal times may change due to landings and wildlife encounters, you'll always be served three well-prepared meals per day. Most dietary restrictions can be accommodated by letting us know prior to your expedition.

Balena Restaurant, the main diningroom on Deck 7 of *Ultramarine*, features tables that accommodate 2 to 10. Guests can enjoy a quiet dinner with a loved one or join a larger table of new friends. Guests will enjoy views from every seat in addition to direct access to the wraparound deck. Guests can also enjoy a meal in Bistro 487, which offers an indoor/outdoor dining experience—perfect for enjoying the polar landscapes.

Breakfasts and lunches are normally served buffet style, while dinners are served plated. À la carte meals are made at the time of your order, allowing our chefs to prepare each dish to your individual needs, ensuring you receive top-quality meals during the course of your expedition.

Soft drinks and juices are available during meals and when the bar is open; beer and wine are served with dinner; and coffee, tea and water stations are available around the clock—all included in the cost of your package. Spirits, premium wines and champagne are available at extra cost which can be billed to your shipboard account. The well-stocked bars on the ship are open to enjoy with your fellow shipmates in late morning, afternoon and evening.





Possible Excursions

When traveling in extremely remote regions, your Expedition Team must consider the sea, ice and weather to guide the route and itinerary details. The following sites are a sample of what you may experience on your expedition, whether by ship, Zodiac cruise, or shore landing.

Antarctic Peninsula

CIERVA COVE

Cierva Cove boasts jaw dropping icebergs and a glaciated backdrop. A massive glacial face regularly calves into the bay, leaving often spectacular floating ice. Seals can be spotted on ice floes, and later in the season, humpback whales occasionally feed in the icy waters.

CUVERVILLE ISLAND

Rising out of the mouth of the Errera Channel, this tall, steep island is covered by a colorful spectrum of lichens and mosses. A large gentoo penguin rookery is situated on a rocky beach at the north end of the island. Depending on when in the season you arrive, you may see the penguins building nests, incubating eggs, or attending to their chicks.

DAMOY POINT

Damoy Point is the site of a historical ice runway used by the British Antarctic Survey for their flights further south since 1975. The well-maintained hut was used as a staging-post to store supplies and for accommodation while awaiting ideal flying conditions. The point is also home to a penguin rookery and allows for spectacular views of the mountains of Anvers Island.

DANCO ISLAND

Home to gentoo penguins, this small dome-shaped island provides you with a stunning view of the Errera Channel and excellent Zodiac cruising opportunities.

ENTERPRISE ISLAND

Located in Wilhelmina Bay, this island's protected coves were once used by whalers. A Zodiac cruise exploring the island passes the rusting remains of a wrecked whaling ship, and provides opportunities to search for humpback whales.



LEMAIRE CHANNEL

One of the most scenic locations on the peninsula's west coast, this dramatic strait runs between the towering cliffs of Booth Island and the Antarctic Peninsula. The channel may become impassable when ice fills the narrow, 6.8-mile (11 km)-long passageway, so we'll hope for clear waters.

MELCHIOR ISLANDS

This group of low, glaciated islands in Dallmann Bay is where you may see hauled-out male fur seals as they recuperate from their battles for supremacy at the end of their breeding season.

MIKKELSEN HARBOR

Located on the south side of Trinity Island and surrounded by stunning ice cliffs and several reefs, Mikkelsen Harbor is a 1.86-mile (3 km)-wide bay, discovered by a Swedish Antarctic expedition in 1901-04. Enjoy a Zodiac cruise of the beautiful waters, or if conditions allow, land at D'Hainaut Island, home to an Argentine refuge hut and whaling remains in the form of a wooden boat

and whale skeletons. Weddell seals are often seen in the area and a gentoo penguin rookery is situated on the island.

NEKO HARBOUR

Little evidence remains that this bay was once used by the floating whale factory ship *Neko*. You might see whale vertebrae being used by resident gentoo penguins as shelter from the wind.

PARADISE HARBOR

Paradise Harbor is a wide bay and natural harbor on the West Antarctic Peninsula. Mountains, glaciers and ice cliffs offer spectacular views. Icebergs occasionally calve from the glaciers, providing a place for seals, penguins and seabirds to rest and play. An Argentine base, Almirante Brown Station—named after Admiral Guillermo Brown, father of the Argentine Navy—is also located in Paradise Harbor, and was operated from 1951 until a large section of it burned down in 1984. It has since been partially rebuilt and today is used during summer months for scientific research.

PETERMANN ISLAND

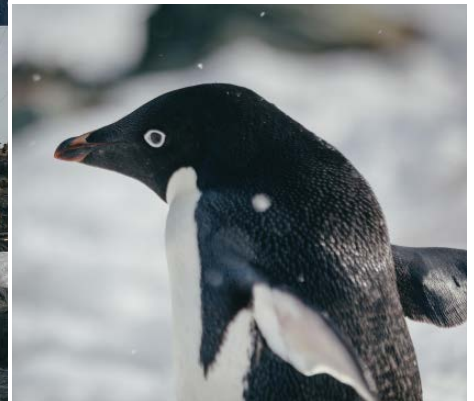
Here, near the Lemaire Channel, you can stand on shore and see the southernmost breeding colony of gentoo penguins. Adélie penguins, shags and south polar skuas also inhabit the island.

PORT LOCKROY

As part of Operation Tabarin during the Second World War, a secret British base was built in this sheltered harbor, located on the west side of Wiencke Island. Now a designated historic site, the base is a museum and post office. Proceeds from your purchases in Port Lockroy support the UK Antarctic Heritage Trust, which preserves British and other historic sites dating to the Heroic Age of Exploration. A large gentoo penguin population resides here.

WILHELMINA BAY

Humpback whales abound in "Whale-mina Bay," as it's nicknamed, and the scenery is spectacular. Sheer cliffs and glaciers surround the calm waters of the protected bay, named after



Wilhelmina, queen of the Netherlands from 1890 to 1948. If you're lucky, you may see the humpbacks bubble-net feeding: they exhale while swimming in a wide circle below the surface, trapping krill in a "net" of bubbles, and then swim straight up from below, mouths open, to engulf their prey. A truly astounding sight!

WATERBOAT POINT

A surveyor and a geologist lived in a makeshift shelter utilizing an up-turned water boat on this point from 1921 to 1922. The remains of their camp have been designated an Antarctic historic site. The aptly named Waterboat Point is also home to a Chilean Antarctic research station, named González Videla Base after the first sitting head of state to visit the Antarctic continent. When the base is manned, you may be welcomed inside for a visit by the base personnel, or you may visit the resident nesting gentoo rookery if the base is inactive.

South Shetland Islands

AITCHO ISLANDS

This group of small islands is situated in the northern entrance of the English Strait. You can often spot a great mix of wildlife in the area, with gentoo and chinstrap penguins having established rookeries on the islands. Southern elephant, fur and Weddell seals frequently haul out here, too.

DECEPTION ISLAND

Deception Island is a flooded circular caldera formed by the collapse of an active volcano. To reach this protected harbor, it is necessary to sail through a narrow passage called Neptune's Bellows. Inside are several bays used at various times for whaling and scientific research. Along with waddling penguins and lounging seals, you'll see the rusting remains of whaling operations on the beach in some locations. The landscape of Deception Island often presents

opportunities for longer walks to striking vistas. The stark contrast between snow and dark volcanic sand and the steam along the shoreline from geothermic activity when the tide is right, gives this location an atmospheric feel.

HALF MOON ISLAND

This crescent-shaped island was known to sealers as early as 1821. While they tried to keep this productive location secret, we're happy to bring you ashore on this impressive island. Many Antarctic birds breed here, including chinstrap penguins, shags, Wilson's storm petrels, kelp gulls, snowy sheathbills, Antarctic terns and skuas.

HANNAH POINT

On the southern coast of Livingston Island at Hannah Point, you may see chinstrap and gentoo penguin rookeries, along with the occasional breeding macaroni penguin. Due to the rather



congested area available to the nesting penguins, we are able to visit here only after January 10.

PENGUIN ISLAND

The entire continent of Antarctica has only two species of flowering plants, both of which you can find on Penguin Island: Antarctic hair grass (*Deschampsia antarctica*) and Antarctic pearlwort (*Colobanthus quitensis*). Chinstrap penguins, fur seals and southern elephant seals can also be spotted here.

ROBERT POINT

A beautiful spot for Zodiac cruising, this point was known to sealers as early as 1820. Chinstrap penguins, kelp gulls and pintado petrels breed here, and whales may be seen in the surrounding waters.

TURRET POINT

Chinstrap and Adélie penguin rookeries are found on this point, situated on the northeast coast of King George Island.

The beaches here are often crowded with southern elephant, fur and Weddell seals hauled out on the rocks.

YANKEE HARBOUR

Gentoo penguins have established a rookery at this harbor, situated on the southwest side of Greenwich Island. Here, you can see an abandoned Argentine refuge hut and a large glacier that stretches along the east and north sides of the bay. An abandoned sealing try pot is all that remains of the activity that brought men thousands of miles in tall ships to seek their fortune. Enjoy a rare chance for a longer walk along the expansive beach, dotted with historical artifacts and wildlife.

EXPEDITION SPIRIT

Embracing the unexpected is part of the legacy—and excitement—of expedition travel. When traveling in extremely remote regions, your Expedition Team must consider the sea, the ice and the weather to guide the route and itinerary details. This itinerary is a tentative outline of what you may experience on this voyage; please be aware that no specific itinerary can be guaranteed. By the same token, wildlife encounters as described are expected, but not guaranteed. Your Expedition Team will use their considerable experience to seek out wildlife in known habitats, but the presence of any particular species of bird or marine wildlife is not guaranteed.



What to pack on your polar expedition

WHAT TO BRING! Packing for the Polar Regions doesn't have to be daunting, and to make it easier for you, all Quark Expeditions voyages include a Quark parka to keep, and a loan of insulated waterproof boots. Additional suggested items include:

WEATHER CONDITIONS AND TEMPERATURES

Polar weather is extremely variable; temperatures may hover around the freezing mark and winds can be strong. The extended daylight warms sheltered areas so that you may sometimes find it warm enough for t-shirts. However, you may encounter rain, snow squalls, fog and white-outs during an expedition and should be ready for any conditions.

TO WEAR ON LANDINGS

- Base-layer wool or synthetic top
- Base-layer wool or synthetic bottom
- Mid-layer warm or fleece top
- Mid-layer warm or fleece bottom
- Warm wool or synthetic socks (keep a dry pair in your bag, and bring extras for layering)
- Glove liners
- Waterproof gloves or mitts (bring an extra pair)
- Scarf, buff, or other face protection
- Warm hat that covers ears (bring an extra)
- Waterproof pants (mandatory for every Zodiac ride)
- Waterproof, lightweight backpack or dry sack
- Polarized sunglasses with UV protection (bring an extra pair)
- Ski goggles (offers extra protection for adventure options or Zodiac cruising on snowy or windy days)
- Sunscreen
- Lip Balm

TO WEAR ONBOARD

- Complimentary Quark 3-in-1 Parka provided on board (wear the waterproof shell out on deck, and the removable liner indoors to stay comfortable)
- Comfortable casual clothing like lighter shirts, pants or jeans, etc. (in case the ship gets warm)
- Comfortable non-slip closed-toed unheeled shoes (flip flops, sandals or slip-on shoes should not be worn on board due to safety concerns)

ADDITIONAL ITEMS

- Swimsuit (for the Polar Plunge! Some vessels may also have a pool, hot tub, sauna and/or steam room. See your ship book for details.)
- Light warm jacket to wear during travel to the ship
- Workout attire (for the fitness center!)
- Binoculars
- Hand and feet warmers
- Camera with charger and extra batteries
- Extra memory or laptop with spare storage (for saving photos)
- Waterproof cell phone case or rain sleeve for camera
- Lens cloth for camera
- Earplugs and eye masks for sleeping
- Voltage converters and plug adapters (see ship book for details)
- Personal alarm such as mobile phone, watch, or alarm clock
- Moisturizer for face and hands (polar air can be dry)
- Extra pair of prescription glasses or contact lenses
- Reusable waterproof bags or plastic bags with zippers (to keep small items organized and cameras dry)
- Seasickness, indigestion, headache, or other medications
- Hand sanitizer
- Passport, visas, immunization and vaccination records, travel documents, etc. (as required)
- Small amount of local currency (see pre-departure book for more details)
- Water bottle (a collapsible reusable water bottle will be provided onboard)

Scan this QR code to watch our video on what to pack before you go!





The Leader in Polar Adventures

TO BOOK YOUR NEXT ADVENTURE

Contact your Travel Professional
or a Quark Expeditions Polar Travel Adviser

TOLL FREE AND LOCAL NUMBERS:

North America (Toll Free) 1 888 332 0008

U.K. Tel +44 203 514 2712

U.K. (Toll Free) 0 808 120 2333

Australia Tel +61 280 155 028

Australia (Toll Free) 1 800 812 855

France Tel +33-1 80 14 01 05

France (Toll Free) 08 05 08 66 46

QuarkExpeditions.com

PHOTO CREDITS (over all Expedition Brochures for the Antarctic 2024/25 season):

Acacia Johnson; David Merron; Michelle Sole; Nicky Souness; Samantha Crimmin; Hugo Perrin; Taylor Cranney;
Sam Edmonds; Abbey Weisbrot; Hans Lagerweij; Rogelio Espinosa; Cindy Miller Hopkins; Grange Productions;
Adobe Stock

EXPEDITION BROCHURE
March 22, 2023