

ARCTIC 2025

Ultimate Arctic Voyage

From Svalbard to Jan Mayen to Iceland



ULTRAMARINE

DESIGNED TO GO BEYOND

Contents

1	Expedition Overview
2	Itinerary
4	Arrival and Departure Details, and International Flight Planning
6	Your Ship
8	Included Activities
9	Adventure Options
10	Departure Dates
11	Inclusions and Exclusions
12	Your Expedition Team
13	Meals on Board
14	Possible Excursions
17	Packing Checklist



This image was shot with a telephoto lens.

Expedition Overview

Ultimate Arctic Voyage: From Svalbard to Jan Mayen to Iceland

Perfect for first-time visitors to the Arctic who are seeking lots of adventure, our *Ultimate Arctic Voyage: From Svalbard to Jan Mayen to Iceland* itinerary highlights three spectacular destinations near the top of the world. This journey provides adventurous guests with a taste of the incredible diversity of the Arctic, featuring wildlife, giant icebergs, towering mountains, historical sites, wide expanses of tundra and more.

Your adventure begins in the remote Norwegian island of Spitsbergen, renowned for its stunning scenery and abundant, varied wildlife such as polar bears and walrus. From there, sail south across the Greenland Sea to the mysterious, volcanic Jan Mayen, a nature reserve so remote that few have ever been fortunate enough to explore this Arctic treasure. Your epic adventure culminates with a journey under the midnight sun to Reykjavik, where you can soak up Icelandic culture in a city that never sleeps.

HIGHLIGHTS



Spot iconic Arctic wildlife, such as polar bears, walrus and reindeer



Explore the magnificent fjords and glaciers of Spitsbergen



Experience the remote volcanic island of Jan Mayen



Cruise in a Zodiac to explore glaciers, icebergs and more



Immerse yourself in the icy realm of the Arctic with optional kayaking adventures



Itinerary

DAY 1 | ARRIVE IN HELSINKI, FINLAND

Your Arctic adventure begins in Helsinki, renowned for its extraordinary architecture and intriguing mix of eastern and western influences. If you arrive early, explore the many museums, galleries and restaurants, relax at a Finnish sauna or wander the vibrant Design District before retiring to your hotel, which is included in your Charter Flight & Hotel Package.

DAY 2 | FLY TO LONGYEARBYEN, SVALBARD & EMBARK

This morning, the group will transfer to the airport and board our private charter flight to Longyearbyen, Spitsbergen's largest settlement, as part of the transfer package. As you embark this afternoon, expect great views of the mountainous landscape that serves as a backdrop for this seaside town.

DAYS 3 - 6 | EXPLORING SPITSBERGEN

Exploring Spitsbergen, the largest island in the Norwegian Svalbard archipelago, rewards you with austere beauty and opportunities to spot its abundant wildlife. Here, you'll visit spectacular glacier fronts and tundra in full bloom, with walrus, polar bears and Svalbard reindeer amongst your possible wildlife sightings. Birders will be thrilled to see Arctic terns, skuas, Brünnich's guillemots, black-legged kittiwakes and ivory gulls. If conditions permit, you could sail within 10 degrees of the North Pole.

DAYS 7 & 8 | CRUISING

While sailing south through the historic Greenland Sea toward Jan Mayen, your Expedition Team will keep you informed with presentations about the history and politics of the Arctic, its fascinating



ULTIMATE ARCTIC VOYAGE:
From Svalbard to Jan Mayen to Iceland
Onboard *Ultramarine* ———
Flight from Helsinki - - - - -

wildlife, geology, ecology and climate, and the incredible sights you will soon explore. On deck, you'll learn to identify seabirds "on the wing." The team will also keep a lookout for the whales that frequent the waters here.

DAYS 9 | EXPLORING JAN MAYEN

North of the Arctic Circle, about 280 miles (450 km) east of Greenland and 340 miles (550 km) north of Iceland, the mysterious Jan Mayen rises from the depths of the North Atlantic. Often shrouded in thick fog, the small mountainous island was declared a nature reserve in 2010 and is rarely visited, save for the 18 rotating personnel of the Norwegian military and Norwegian Meteorological Institute, who are the only inhabitants.

Landing here will be dictated by the weather and sea. If conditions allow, as we approach, keep watch on deck as the spoon-shaped island's highest summit emerges. At 7,470 feet (2,277 meters) high, the breathtaking Beerenberg volcano features a symmetrical cone shape and impressive glaciers that spill into the sea.

If we're fortunate, we may get a close-up view of the volcano and the stratified cliffs of the spectacular north coast as we Zodiac cruise along the coast of the island, searching for wildlife. Designated an Important Bird Area by BirdLife International for the large numbers of breeding seabirds, Jan Mayen supports colonies of northern fulmars, little auks, glaucous gulls, kittiwakes, and black and Brünnich's guillemots (thick-billed murre).

DAYS 10 & 11 | CRUISING

As we sail south, the Denmark Strait is your pathway toward Iceland. Take in a presentation, share your photos, sip an icy cocktail in the bar or watch a film—there are many things to do during your time at sea. Your Expedition Team will also be on hand to answer any questions and point out wildlife.

DAY 12 | DISEMBARK REYKJAVIK

You'll disembark in Reykjavik, Iceland's capital, at the end of your expedition, and be transferred to your hotel, which is included in your Charter Flight & Hotel Package.

DAY 13 | DEPART REYKJAVIK

Today, make your way to Keflavik Airport to catch your onward flight, or spend more time exploring the fascinating city of Reykjavik.

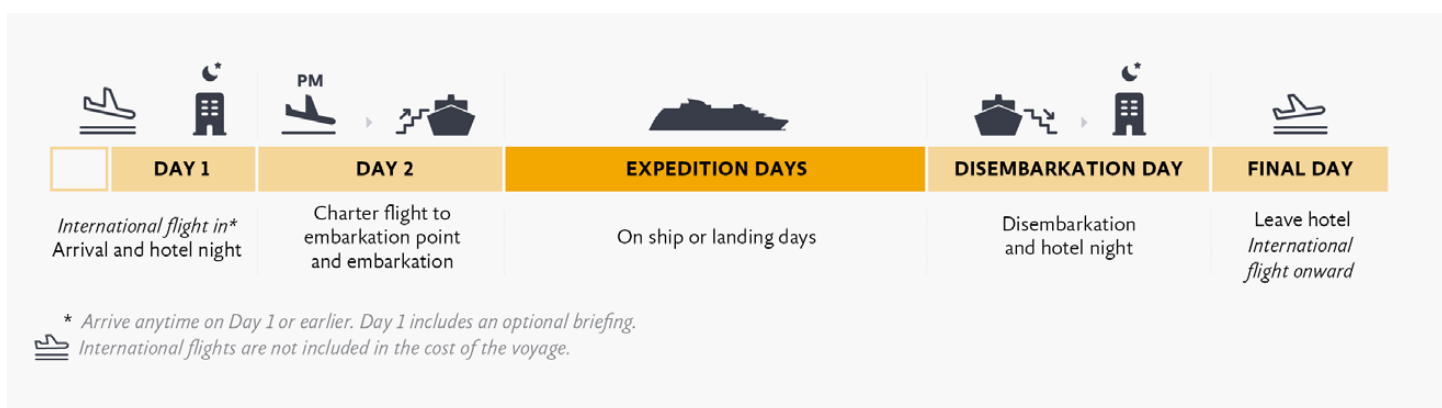
EXPEDITION SPIRIT

Embracing the unexpected is part of the legacy—and excitement—of expedition travel. When traveling in extremely remote regions, your Expedition Team must consider the sea, ice, wildlife, and weather to guide the route and itinerary details. This itinerary is a tentative outline of what you may experience on this voyage; please be aware that no specific itinerary can be guaranteed. By the same token, wildlife sightings as described are expected, but not guaranteed. Your Expedition Team will use their considerable experience to seek out wildlife in known habitats, but the presence of any particular species of bird or marine wildlife is not guaranteed.





Arrival and Departure Details, and International Flight Planning



Arrival Day and Embarkation

DAY 1 — ARRIVING AND HOTEL NIGHT IN HELSINKI

You may arrive in Helsinki at any time during Day 1 of the itinerary. Your included accommodation will be at the airport hotel, so arrival transfers are not necessary. Please keep in mind that your hotel room may not be ready for check in until 3 pm.

On arrival at the hotel, you will receive a welcome letter outlining the departure information for the following day's flight. Final details and check-in procedures can be found in your final documents. An agent representing Quark Expeditions® will be available in the lobby of the hotel that evening to answer any questions about the charter flight(s) scheduled for the following morning.

DAY 2 — CHARTER FLIGHT AND EMBARKATION IN LONGYEARBYEN

Upon arrival in Longyearbyen, you will be transferred from the airport to a drop-off point, and your luggage will be taken directly to the ship. Details of ship transfer times will be provided during your arrival transfer. Due to port logistics, it is possible that you may need to board the vessel by Zodiac, rather than from the pier.

PLEASE NOTE

There is a strict luggage weight limit on checked luggage and cabin baggage on the flights between Helsinki and Longyearbyen. There is no option to pay for additional luggage.

You will find in your final documents:

- › Luggage weight restrictions on charter flights.
- › Hotel information and check in time
- › Charter flight time to embarkation point
- › Embarkation plan
- › Departure charter flight time

Final Day and Departure

DISEMBARKATION IN REYKJAVIK AND ONWARD

Your voyage is scheduled to end in Reykjavik where you will disembark after breakfast. The process takes about an hour. After disembarkation, you will transfer to your post-expedition hotel for the night. After breakfast the following morning, you may make your way to the airport to connect with your onward flight, or stay longer if you have booked additional accommodation.

Arrival and Departure Transfers

HELSINKI AIRPORT TRANSFERS

An arrival transfer in Helsinki is not included in the expedition. Your first night's included accommodation will be provided at the airport hotel, so please make your way to the lobby for check-in when you arrive.

REYKJAVIK AIRPORT TRANSFERS

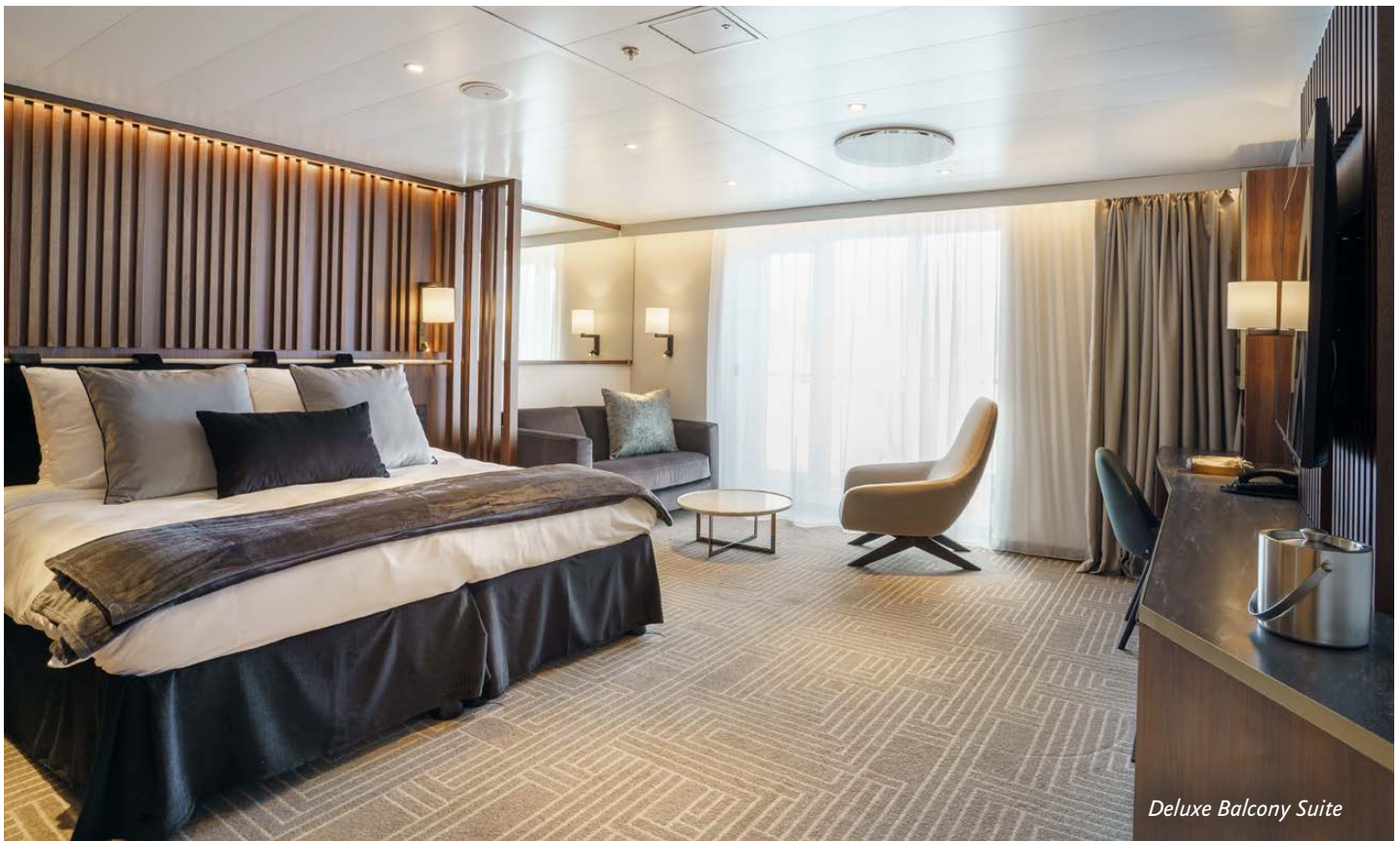
A transfer to the airport is not included. If you require a transfer to the city, you will need to arrange your own transportation. Most airports we travel in and out of have good taxi ranks in the arrivals area, or you can often pre-book a transfer online.

PLEASE NOTE

Included Hotel Accommodations:

Your included accommodation begins on Day 1 of your itinerary, and the specific hotel(s) will be indicated in your final voyage confirmation. If you are arriving prior to Day 1 of your expedition or are staying after the disembarkation day and would like to extend your stay, you can book directly with the hotel or through a third party.





Deluxe Balcony Suite



Sauna



Panorama Lounge



Fitness Center



Balena Restaurant



Included Activities

All of these activities are included in the price of your trip.

Ready for a little adventure beyond your ship? Each Quark Expeditions® voyage offers a variety of recreational activities to enhance your polar experience.

ZODIAC CRUISING

Zodiacs are the workhorses of polar expeditions, taking you to places the ships can't access, allowing you to reach remote shorelines, explore shallow inlets and search for wildlife. Expedition staff make stepping in and out of them safe and comfortable, and your Zodiac drivers will provide active interpretation, making the landscape come even more alive.

HIKING

Led by experienced staff, exploring on foot is one of the best ways to appreciate the polar landscapes. Our guides are able to accommodate a range of skill levels to suit every guest.

PRESENTATIONS

Enjoy daily chats with and presentations by our world-class onboard polar experts—expedition guides, specialists, photography guides, historians and other special guests who will introduce you to the fascinating history, biology, ornithology, and glaciology of the region, and much, much more.

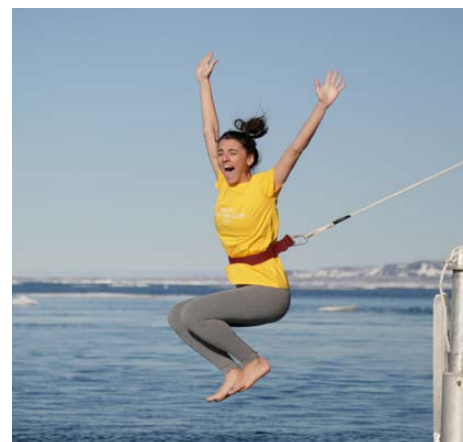
POLAR PLUNGE

This rite of passage, scheduled only once per expedition, gives you the chance to jump safely into the bracing Arctic waters under the watchful eye of our staff—and just about every single camera on board.

PHOTOGRAPHY

Documenting your voyage so you can take the memories home is a rewarding experience. Our photography guide will help you hone your skills to capture the beauty of the polar regions.

Contact your Polar Travel Adviser or your Travel Professional for more information about your Included Activities and Adventure Options, including the necessary experience, physical requirements and cost.





Adventure Options

All of these activities cost extra and should be booked in advance of your trip.



PLEASE NOTE

For all paid activities pre-booking is required. We recommend booking early as spaces fill quickly.

SEA KAYAKING

Imagine gliding across the surface of a bay in the presence of icebergs and glaciers. Our Sea Kayaking program is a great way to intimately explore your surroundings. A small group of kayakers will plan to go out multiple times per voyage as an alternative to shore landings or Zodiac cruises.

The number of opportunities to kayak is weather dependent, and will be conducted only during calm conditions. Prior kayaking experience is required, and you must be able to do a wet exit to participate. Beginners interested in kayaking should consider participating in the Paddling Excursion.

PADDLING EXCURSION

If you're interested in kayaking but would like to try something a bit less demanding than Sea Kayaking, you're the perfect candidate to sign up for a one-time paddle on our stable sit-on-top kayaks—perfect for anyone with minimal or no kayaking experience. Small groups of passengers will be taken out on calm days, with our expert guides always present to provide instruction and help you connect with the polar sea. Two groups of 10 will be pre-booked, and once successfully completed, any subsequent outings will be offered via lottery on board.



Departure Dates

Ultimate Arctic Voyage: From Svalbard to Jan Mayen to Iceland

ULTRAMARINE

<i>Dates</i>	<i>Days</i>	<i>Start / End</i>	 Sea Kayaking	 Paddling Excursion
ARCTIC 2025				
JUL 7 - 19, 2025	13	Helsinki/Reykjavik	\$	\$

\$ Paid Activities



Inclusions and Exclusions

Inclusions

RATES INCLUDE:

- An official Quark Expeditions® parka to keep
- Leadership throughout your voyage by our experienced Expedition Leaders, including shore landings and other activities
- All Zodiac transfers and cruising as per the daily program
- All shore landings as per the daily program
- Shipboard accommodation with daily housekeeping
- All meals, snacks, soft drinks and juices on board throughout your voyage (Please inform us of any dietary requirements as far in advance as possible. Unfortunately, the ships' galleys cannot prepare kosher meals.)
- Complimentary select beer, wines and select cocktails during bar service hours and dinner
- Complimentary coffee, tea and cocoa available around the clock
- Formal and informal presentations by our Expedition Team and guest speakers as scheduled
- A photographic journal documenting the expedition
- A pair of waterproof expedition boots on loan for landings and Zodiac cruising excursions
- Hair dryer and bathrobes in every cabin
- Complimentary Wi-Fi service on one device permitting basic Internet browsing, email, posting on social media and voice applications. (Premium packages are available for more data-intensive applications.)
- All miscellaneous service taxes and port charges throughout the program
- All luggage handling aboard the ship
- Transfer from Longyearbyen town center to port on embarkation day
- Group transfer to downtown Reykjavik on disembarkation day
- Greenland voyages cruise passenger tax

*CHARTER FLIGHT & HOTEL PACKAGE INCLUDES:

- One night's pre-expedition hotel night in Helsinki
- Arrival and departure transfers in Longyearbyen
- Charter flight from Helsinki to Longyearbyen
- One night's post-expedition hotel night in Reykjavik

Exclusions

RATES SPECIFICALLY DO NOT INCLUDE:

- Charter Flight & Hotel Package*
- International airfare
- Arrival transfer in Helsinki
- Airport transfer in Reykjavik
- Passport and visa expenses
- Government arrival and departure taxes not mentioned above
- Meals ashore unless otherwise specified
- Baggage, cancellation, interruption and medical travel insurance—strongly recommended
- Excess-baggage fees on international and domestic flights
- Mandatory waterproof pants for Zodiac cruising, or any other gear not mentioned
- Laundry, bar and other personal charges unless specified
- Phone charges may vary by location
- Voluntary gratuity at the end of the voyage for shipboard staff and crew
- Additional overnight accommodation
- Adventure Options not listed in Included Activities



Your Expedition Team

Our Expedition Leaders and their teams bring diverse expertise in subjects as varied as polar history, marine biology, glaciology, ornithology and photography. Their knowledge and enthusiasm will greatly enhance your immersion into the polar environment and further deepen your connection to the Arctic.

With over 30 years of experience bringing passengers to remote polar regions and an industry-leading staff-to-guest ratio, we know how to safely handle the unexpected. Ensuring this hard earned experience is passed on, our expedition staff receive comprehensive training in Quark Academy, which provides hands-on polar expedition training prior as part of our onboarding process as well as ongoing training for experienced staff.



Raise a Glass and Stay Connected

See below for specifics on our complimentary Wi-Fi and bar service.



Meals on Board

If there is one constant on board, it is that you'll enjoy delicious meals daily. While meal times may change due to landings and wildlife sightings, you'll always be served three well-prepared meals per day. Most dietary restrictions can be accommodated by letting us know prior to your expedition.

Balena Restaurant, the main diningroom on Deck 5 of *Ultramarine*, features tables that accommodate 2 to 10. Guests can enjoy a quiet dinner with a loved one or join a larger table of new friends. Guests will enjoy views from every seat in addition to direct access to the wraparound deck. Guests can also enjoy a meal in Bistro 487, which offers an indoor/outdoor dining experience—perfect for enjoying the polar landscapes.

Breakfasts and lunches are normally served buffet style, while dinners are served plated. À la carte meals are made at the time of your order, allowing our chefs to prepare each dish to your individual needs, ensuring you receive top-quality meals during the course of your expedition.

Complimentary coffee, tea, cocoa and water stations are available around the clock, while soft drinks and juices are available during meals and when the bar is open—all included in the cost of your package.

Enjoy free beer, standard wines, spirits, and cocktails during bar service hours and dinner as part of our “Raise a Glass and Stay Connected Free” program. Premium wines and champagne are available at extra cost and can be billed to your shipboard account. The well-stocked bars on the ship are open late morning, afternoon and evening, though hours may occasionally change to accommodate the expedition schedule.





Possible Excursions

When traveling in extremely remote regions, your Expedition Team must consider the sea, ice and weather to guide the route and itinerary details. The following sites are a sample of what you may experience on your expedition, whether by ship, Zodiac cruise, or shore landing.

Svalbard

14TH OF JULY GLACIER

Named after France's Bastille Day (the 14th of July), this large glacier is situated in Krossfjorden, a bay on the northwest coast of Spitsbergen. The area is teeming with wildlife, and is the best place in Svalbard to catch a glimpse of the Atlantic puffin. Nesting at certain times of year along the shore are purple sandpipers, common eiders, barnacle geese, Arctic tern and Brünnich's guillemots (thick-billed murres). Bearded and ringed seals also frequent the waters here.

LILLIEHÖÖK GLACIER

In 2005, nearly 100 years after his great-great-grandfather conducted scientific investigations here, Prince Albert II of Monaco returned to Lilliehöök Glacier to honor his ancestor's memory. Here, you can take a Zodiac cruise amid labyrinths of sparkling icebergs, and witness breathtaking panoramas of ice. You may even spot bearded seals hauled out on the floes.

LONGYEARBYEN

Home to 2,400 people, the administrative capital of Svalbard is situated on the southern side of Adventfjorden. The settlement was founded in 1905 by John Munroe Longyear, the majority owner of the Arctic Coal Company of Boston. Today as much as ever, this is a true frontier town.



MONACO GLACIER

Prince Albert I of Monaco, a pioneer of oceanography, led an expedition to Svalbard in 1906. His team used sophisticated photographic techniques to understand the shape and position of several glacier fronts. Monaco Glacier honors the expedition, the prince and the principality over which he reigned. While touring the glacier front by Zodiac cruise, listen to the crackle and pop of the brash ice, search for seals and have a chance to admire a natural sculpture gallery.

POOLEPYNTEN

This flat peninsula lies on the east coast of Prins Karls Forland (Prince Charles Foreland), which is part of a national park (est. 1973) that includes both the island and the surrounding sea.

Poolepynten is a great place for walrus viewing and photography. Encountering a walrus haul-out is a moment you won't forget. These lumbering giants of the Arctic create quite a noisy scene as each walrus vies for a choice spot of coastline.

SMEERENBURG

Surrounded by fjords, glacier fronts and rugged mountains, the abandoned settlement of Smeerenburg, which means "blubber town," was established by Dutch whalers nearly 400 years ago. One of Europe's most northerly outposts, this is a good spot to explore ashore and learn about Spitsbergen's whaling history. You can also visit a memorial erected in 1906 to honor the whalers who lost their lives in the 17th and 18th centuries. A walrus haul-out can sometimes be seen here.



Jan Mayen

BEERENBERG

Covered in glaciers, this active volcano dominates the northern half of Jan Mayen, taking up a significant part of the island's mere 144 square miles (373 sq km). A soaring 7,470 feet (2,277 meters) high, it last erupted in 1985. Let's hope for clear skies to admire this monolith from the ship or shore.

KVALROSSBUKTA

One of only two possible landing sites in Jan Mayen is Kvalrossbukta. This small bay is the site of the remains of a 17-century whaling station. The island is home to a variety of birdlife, including a large northern fulmar colony.

OLONKINBYEN

Jan Mayen's only settlement, Olonkinbyen is located at the southeastern side of the island, by Båtvika (Boat Cove), the other possible

landing site. As a designated nature reserve, Jan Mayen remains uninhabited, except for the 18 rotating personnel who reside in the settlement and work at either the nearby weather station or radio station.

Iceland

REYKJAVIK

Iceland has been ranked by the United Nations as one of the best countries in which to live. Its capital, Reykjavik (which means "Smoky Bay"), was named by the country's first settler, Norseman Ingólfur Arnarson, who was inspired by the geothermal mist rising from the ground.

EXPEDITION SPIRIT

Embracing the unexpected is part of the legacy—and excitement—of expedition travel. When traveling in extremely remote regions, your Expedition Team must consider the sea, ice, wildlife, and weather to guide the route and itinerary details. This itinerary is a tentative outline of what you'll experience on this voyage; please be aware that no specific itinerary can be guaranteed. By the same token, wildlife sightings as described are expected, but not guaranteed. Your Expedition Team will use their considerable experience to seek out wildlife in known habitats, but the presence of any particular species of bird or marine wildlife is not guaranteed.



What to pack on your Arctic expedition

BY SEA

All transfers ship to shore and Zodiac/ship cruising.

- ☐ Waterproof pants (mandatory for every Zodiac ride)
- ☐ Base-layer wool or synthetic top*
- ☐ Base-layer wool or synthetic bottom*
- ☐ Mid-layer warm or fleece top*
- ☐ Mid-layer warm or fleece bottom*
- ☐ Warm hat that covers ears (bring an extra)
- ☐ Scarf, buff, or other face protection
- ☐ Warm wool or synthetic socks (keep a dry pair in your bag, and bring extras for layering)
- ☐ Waterproof gloves or mitts (bring an extra, lighter pair for hiking)
- ☐ Glove liners*
- ☐ Hand and feet warmers*
- ☐ Binoculars
- ☐ Polarized sunglasses with UV protection (consider bringing an eyewear retainer: string/clip etc.)
- ☐ Ski goggles (for Zodiac cruising on snowy or windy days)
- ☐ Waterproof, lightweight backpack or dry sack and/or rain sleeve for camera or a waterproof phone case (to keep camera & gear dry)

*recommended layering depending on the conditions of the day and reflecting your personal thermo-regulation comfort levels.

BY LAND (Shore Excursions and Hiking)

In addition to the gear requirements (as above) mandatory for the transit from ship to shore, it is recommended to bring:

- ☐ Hat, buff or scarf (for wind and weather protection)
- ☐ UV protection (sun hat, polarized sun glasses, sun block, lip balm etc.)
- ☐ Collapsible walking sticks for hikes (if required)
Quantities are available to borrow on every vessel
- ☐ Additional reusable (thermos-regulating) water bottle (in addition to the reusable collapsible water bottle provided)

WHAT TO BRING Packing for the Polar Regions doesn't have to be daunting, and to make it easier for you, all Quark Expeditions voyages include a Quark parka to keep, and a loan of insulated waterproof boots. Additional suggested items include:

TO WEAR ON BOARD

- ☐ The complimentary Quark 3-in-1 Parka provided on board is designed with a waterproof shell that can be worn out on deck, and a removable liner that you can wear to stay comfortable indoors)
- ☐ Comfortable casual clothing like lighter shirts, pants or jeans, etc. (in case the ship gets warm)
- ☐ Comfortable non-slip closed-toed, heelless shoes (flip flops, sandals or slip-on shoes should not be worn on board due to safety concerns)
- ☐ Workout attire (for the fitness center and other indoor activities)
- ☐ Swimsuit for the Polar Plunge. Some vessels may also have a pool, hot tub, sauna and/or steam room. See your ship book for details.

Just a reminder: No formal evening wear required on our voyages but if you would like to bring something a little more dressy for the Captain's welcome and farewell cocktails you may certainly do so.

ADDITIONAL ITEMS

- ☐ Passport, visas, immunization records, travel documents, etc. as required
- ☐ Camera gear—complete with charger, storage medium, transport and cleaning kit (lens cloth etc.) and extra batteries
- ☐ Reusable waterproof bags or plastic bags with zippers (to keep small items organized and cameras dry)
- ☐ Voltage converters and plug adapters (see ship book for details)
- ☐ Seasickness, indigestion, headache, or other medications
- ☐ Earplugs and eye masks for sleeping
- ☐ Moisturizer for face and hands (skin dryness due to wind and temperature changes)
- ☐ Credit card and small amount of local currency (see pre-departure book for more details)

- › To view our packing checklist online, visit: [QuarkExpeditions.com/What-to-Pack/Arctic](https://www.quarkexpeditions.com/What-to-Pack/Arctic)
- › Related topics are covered on our Frequently Asked Questions page: [QuarkExpeditions.com/Frequently-Asked-Questions](https://www.quarkexpeditions.com/Frequently-Asked-Questions)



Scan this QR code or [click here](#) to watch our video on what to pack before you go.

WEATHER CONDITIONS & TEMPERATURES

Polar weather is extremely variable; temperatures may hover around the freezing mark and winds can be strong. The extended daylight warms sheltered areas so that you may sometimes find it warm enough for t-shirts. However, you may encounter rain, snow squalls, fog and white-outs during an expedition and should be ready for any conditions.



Polar-Obsessed Since 1991

TO BOOK YOUR NEXT ADVENTURE

Contact your Travel Professional
or a Quark Expeditions® Polar Travel Adviser

TOLL FREE AND LOCAL NUMBERS:

North America (Toll Free) **1 888 332 0008**

U.K. Tel **+44 203 514 2712**

U.K. (Toll Free) **0 808 120 2333**

Australia Tel **+61 2 72580333**

Australia (Toll Free) **+61 1800 953518**

France Tel **+33-1 80 14 01 05**

France (Toll Free) **08 05 08 66 46**

QuarkExpeditions.com

Photos captured with a telephoto lens from a responsible distance, following regulatory/AECO guidelines.

PHOTO CREDITS: (over all Expedition Brochures for the Arctic 2025 season):

Acacia Johnson; David Merron; Nicky Souness; Samantha Crimmin; Sam Edmonds; Michelle Sole; Cindy Miller Hopkins; Sue Flood; Hugo Perrin; Peter Lindstrom; Visit Greenland; Nicolas Singh; Rogelio Espinosa; Grange Productions; Fokus Productions; Adobe Stock; iStock

EXPEDITION BROCHURE
May 5, 2025