

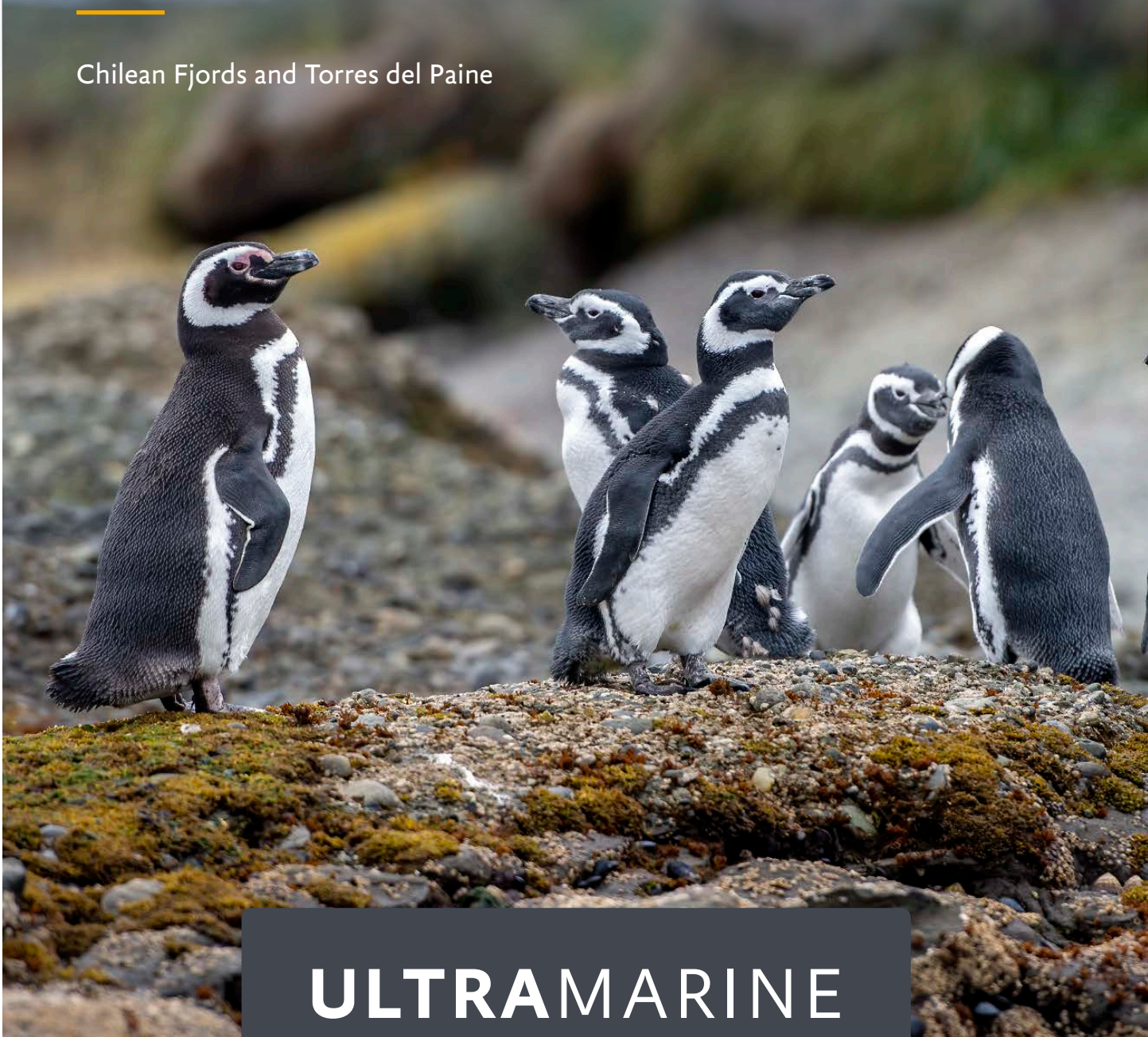


The Leader in Polar Adventures

ANTARCTIC 2024/2025

# ESSENTIAL PATAGONIA

Chilean Fjords and Torres del Paine



## ULTRAMARINE

DESIGNED TO GO BEYOND

# Contents

1	Overview
2	Itinerary
8	Arrival and Departure Details
10	Our Fleet
13	Included Activities
14	Adventure Options
16	Departure Dates
17	Inclusions and Exclusions
18	Your Expedition Team
19	Meals on Board
20	Possible Excursions
22	Packing Checklist





# Overview

## 15-day Essential Patagonia: Chilean Fjords and Torres del Paine

Patagonia is one of the most pristine and unspoiled places on Earth. It's a landscape that leaves no room for indifference. It's true wilderness at the bottom of the globe—where relatively few travelers get to explore. Quark Expeditions has a reputation as a pioneer in wilderness exploration, but also for getting the most out of a destination. For our expedition team—the best in the industry—it's not enough to just get you there. We want you to be fully immersed. We go beyond what other operators do in this region. On our *Essential Patagonia: Chilean Fjords and Torres del Paine* expedition, you'll retrace Charles Darwin's epic voyage to into Chilean Patagonia's spectacular network of fjords and channels. You'll enjoy heli flightseeing and Zodiac cruises along the stunning coastline—while watching for Magellanic penguin colonies, South American sea lions, southern elephant seals, and scores of bird species on an itinerary that combines the best of sea, land, and helicopter experiences onboard *Ultramarine*.

For many, Patagonia is the edge of the earth, the last frontier at the end of the world. That's where we want to take you. Please reach out to our team of Polar Travel Advisers, who are happy to answer your questions and provide assistance at any time.



### EXPEDITION IN BRIEF



Enjoy helicopter flightseeing from *Ultramarine* for a unique perspective of the landscape



Encounter iconic wildlife, such as Magellanic penguins, sea lions and seabirds



Experience some of the world's most remote glacial and fjord systems, including Glacier Alley



Retrace Darwin's route through the Beagle Channel and learn about the storied history of southern Chile



Cruise in a Zodiac for a unique perspective of glaciers, fjords and channels



# Itinerary

## DAY 1 | ARRIVE IN BUENOS AIRES, ARGENTINA

Upon arriving in this splendid city, known for its architecture and rich European heritage, you will independently transfer to your group hotel (pre-expedition hotel night included in mandatory transfer package).

## DAY 2 | FLY TO USHUAIA AND EMBARK

After an early breakfast at the hotel, the group will transfer to the airport and board our private charter flight to Ushuaia, Argentina.

Upon arrival, you will be transferred from the airport to a central downtown location to have some time on your own to explore this quaint port town before meeting the bus (at a designated location) to be transferred to your ship.



### ESSENTIAL PATAGONIA Chilean Fjords and Torres del Paine

- On board the *Ultramarine*
- - - Flights from Buenos Aires / to Santiago
- ..... Torres del Paine excursion



After a late afternoon embarkation, you will sail along the historic Beagle Channel, which transects the Tierra del Fuego archipelago in the extreme south of South America.

### DAY 3 | CAPE HORN

As we begin our exploration of Chile's southern extent, expect a new adventure every day. Though each expedition will be different, depending on the weather, we aim to start our journey to the "edge of the earth" with a visit to historic Cape Horn (Cabo de Hornos). At the southernmost point of the Tierra del Fuego ("Land of Fire") archipelago, this steep, rocky headland on Hornos Island marks the northern boundary of

the famous Drake Passage, where the Atlantic and Pacific Oceans meet. From the 1700s to the early 1900s, prior to the opening of the Panama Canal, this cape was part of a major global trade route.

If sea and weather conditions allow, you may go ashore for a hike out to the lighthouse, the tiny Stella Maris ("Star of the Sea") Chapel, and the albatross-shaped monument honoring the many mariners who lost their lives attempting to "round the Horn." Atop the windswept promontory, pause for a moment to take in the panoramic view and to enjoy the peaceful solitude that can only be found at one of the most southern stretches of land in the world.

### IMPORTANT REMINDER

As this voyage will start in Argentina and enter Chile, please ensure you obtain visas for both countries as required by your nationality. Residents of some countries may also be required to pay a reciprocity fee to enter Chile.



## DAY 4-5 | PIA AND GARIBALDI GLACIERS, GLACIER ALLEY

As our ship sails north toward the southern edge of Tierra del Fuego, stimulating presentations by your Expedition Team will enrich your knowledge of the glacial systems, geology, environment, wildlife and storied history of the region as you retrace Charles Darwin's historic journey through the Beagle Channel, a 150-mile (240 km) strait separating Tierra del Fuego's main island from several smaller islands. Named after Captain Robert FitzRoy's famous ship on which Charles Darwin was a young naturalist, the channel presents plenty of photo ops to capture seabirds hovering overhead and dramatic vistas of jagged-peaked mountains and glaciers. Rugged and untouched, this magnificent

landscape is as starkly beautiful as it was when Darwin first laid eyes on it in 1833. What he experienced in this region would later help him form his then controversial theory on evolution by natural selection.

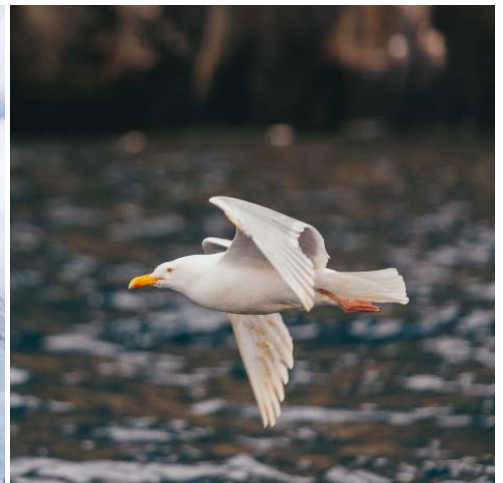
Glacier Alley (as it's nicknamed) is one of the most spectacular ship passages in Tierra del Fuego. The glaciers' names honor the European countries that first explored the region: España (Oblicuo), Romanche, Alemania (Roncagli), Francia, Italia, and Holland Glaciers.

Situated within the protected boundary of Alberto de Agostini National Park, both Pia and Garibaldi Glaciers sit at the head of picturesque, often ice-choked fjords that offer guests jaw-dropping views. Located within the Cordillera

Darwin (Darwin Mountain Range), the impressive Pia Glacier extends from the soaring mountaintops down into the sea. A short hike to a lookout point provides superb vistas of the glacier and mountains.

Surrounded by pristine sub-Antarctic forests, Garibaldi Glacier flows from a separate mountain, providing equally exceptional views, with the Darwin Mountains rising dramatically out of the fjord. We can explore this area by Zodiac, and include a visit to a beautiful glacial waterfall nearby.

As we navigate the fjords, your Expedition Team will keep watch for Andean condors, massive birds whose wing span is second only to the wandering albatross.





#### DAY 6 | DAINELLI (AGUILA) GLACIER

Located at the end of a tranquil lagoon surrounded by lush sub-Antarctic forests in Agostini Sound, Dainelli Glacier (sometimes called Aguila—Spanish for “Eagle” Glacier) is a unique sight, as it appears to flow over rolling hills rather than mountains. Cruising aboard a Zodiac toward the blue-tinged ice, conditions permitting, you will be humbled by the wonder of nature’s power. We hope to venture ashore for an easy hike along the beach to get a more intensive look at the glacier and surrounding mountains.

#### DAY 7 | CRUISING THE CHILEAN FJORDS

Continuing north, we’ll navigate through a remote network of coastal fjords and channels, including time spent venturing out into the Pacific Ocean. Your Expedition Team will prepare you for the adventures that

await, helping you further understand the glacial systems, as well as the flora and fauna that can be found in this part of Chile. Take a moment, as we glide past soaring snow-capped peaks, to contemplate the indigenous peoples who thrived here for thousands of years and the mariners of early European exploration who traveled these same sheltered passageways, and were rewarded with the same wondrous sights.

#### DAYS 8 & 9 | PUERTO NATALES AND TORRES DEL PAINE NATIONAL PARK

Sailing the turquoise waters of the extraordinary stretch of coastline leading to the small port of Puerto Natales, we’ll meander through a mesmerizing maze of deep, windswept fjords, narrow channels and isolated bays, with an eye toward the rugged landscape, unique wildlife and impressive glaciers that tumble from the towering mountains

into the icy waters below, along with the imperial and king cormorants, South American terns, black-necked swans and southern wigeons (Chiloé wigeons) that frequent the fjords.

Torres del Paine National Park is one of the most stunning wilderness areas in South America, and Puerto Natales is the gateway. This enormous park is a UNESCO Biosphere Reserve, so designated for both its natural wonders and ancient human history, and named for the three granite peaks that tower above the glacier-fed lakes. Enjoy a day of hiking, and exploration aboard chartered buses tailored to your preferred activity level with lookouts in the park, followed by traditional Patagonian cuisine in the afternoon.

Taking our expedition onto dry land for another full day, we will also visit a working Patagonian *estancia* (“ranch”),





founded in 1891 by Scottish immigrants. Here you will learn about Patagonian sheep farming in a historic pastoral setting. You may be lucky enough to spot in the surrounding grasslands wildlife such as ostrich-like rhea, and guanacos, a wild relative of the domestic llama. Complete your cultural experience with a lunch of barbecued lamb *al palo* (“on a stick”), and return to the ship in the early evening.

#### **DAY 10 | CANAL DE LAS MONTAÑAS**

Cruising the pristine waters of the Canal de las Montañas (“Channel” or “Fjord of the Mountains”) will leave you breathless. You’ll be awed by the amazing series of waterfalls cascading down between the jagged peaks that rise up sharply on either side of the narrow, 41-mile (66 km) long channel dotted with glaciers, five of which spill dramatically into the water. Here, impressive ice fields glisten in the distance, and steeply sloped glaciers exceed elevations over 8,235 feet (2,510 meters). The channel also provides an ideal place to put our Zodiacs in the water for more detailed exploring or the chance to go ashore for a hike to scenic viewpoints. If you’re feeling more adventurous, perhaps you’ll treat yourself

to an optional kayaking excursion (extra cost), an exceptional opportunity to experience the channel from a unique perspective.

#### **DAY 11 | TUCKERS ISLETS**

A series of small islands and rocky outcrops in Almirantazgo Sound (“Admiralty Sound”), a fjord off the Strait of Magellan, Tuckers Islets is a superb location for viewing penguins. Though landing here is prohibited to protect the fragile nesting habitat, a Zodiac excursion will take you near a pebble beach to view a colony of 4,000-plus breeding Magellanic penguins, conditions permitting. Named for Portuguese explorer Ferdinand Magellan, whose crew sighted the charming creatures in 1520 during the first circumnavigation of the globe, the species is native to the region, and the sight of them in their burrows, lounging on the beach or waddling in and out of the water, is one you won’t forget. If we’re fortunate, we may also see Chilean skuas, Magellanic cormorants (rock shags), imperial cormorants (king shags), oystercatchers, kelp geese, or even dolphins.

#### **DAY 12 | AINSWORTH BAY**

Continuing our exploration of Almirantazgo Sound, we plan to explore ashore at Ainsworth Bay, one of the most picturesque and pristine places in Patagonia. Surrounded by untouched sub-Antarctic forest, this isolated bay is a protected area within the border of Alberto de Agostini National Park. It hosts abundant birdlife, so you’ll want to keep your eyes peeled as we cruise in the Zodiacs. Hiking options will be available for all fitness levels, affording panoramic views of Marinelli Glacier, Marinelli Fjord and the surrounding Darwin mountain range.

#### **DAY 13 | BAHIA BROOKES**

Another excellent spot for glacier exploring in Almirantazgo Sound is Bahia Brookes (Brookes Bay), where, conditions permitting, we’ll go ashore by Zodiac. The bay offers ample chances for closer views of a number of waterfalls and glaciers, including the calving North Brookes Glacier, set against the breathtaking backdrop of the towering Darwin mountain range. Amid the serene silence of this icy wonderland, the only



sound you may hear is the powerful roar of ice breaking off and crashing into the frigid waters below. This is also a great location for viewing ice fall deposits, which form reconstituted glaciers, and kame (silt and sediment deposits).

#### DAY 14 | MARTA ISLAND

In the middle of the Strait of Magellan, Marta Island (Isla Marta) is home to abundant birdlife and more than one thousand Patagonian (South American) sea lions. To protect the wildlife, shore landings are not possible here, but we do plan to circumnavigate the island, providing numerous opportunities to observe and photograph the colony from a short distance, in the comfort of a Zodiac. Called *lobos marinos* (“sea wolves”) by local Chileans, these giant pinnipeds—males can weigh over 700

pounds/320 kg—form quite a noisy group as each sea lion vies for a choice spot of coastline. As you cruise by, sightings of imperial cormorants, skuas, southern gulls, snowy sheathbill—and if we’re lucky, dolphins—are also possible.

#### DAY 15 | DISEMBARK IN PUNTA ARENAS AND FLY TO SANTIAGO

After an adventurous two weeks of exploration, you’ll say goodbye to your Expedition Team and disembark in Punta Arenas, to be transferred to the airport for your charter flight to Santiago, where you are welcome to continue on your own travels or connect to your homeward flights.

### EXPEDITION SPIRIT

Embracing the unexpected is part of the legacy—and excitement—of expedition travel. When traveling in extremely remote regions, your Expedition Team must consider the sea, ice and weather to guide the route and itinerary details. This itinerary is a tentative outline of what you may experience on this voyage; please be aware that no specific itinerary can be guaranteed. By the same token, wildlife encounters as described are expected, but not guaranteed. Your Expedition Team will use their considerable experience to seek out wildlife in known habitats, but the presence of any particular species of bird or marine wildlife is not guaranteed.





# Arrival and Departure Details, and International Flight Planning



As you prepare for your journey, you may be interested in your arrival and departure details. Since international air transportation is not included in the cost of your expedition, you have some flexibility in planning your flights.

## Arrival Day and Embarkation

### DAY 1 — ARRIVING IN BUENOS AIRES AND HOTEL NIGHT

Upon arrival in Buenos Aires, you will make your way to the included group hotel. A presentation room will be open from 12 pm to 8 pm for luggage weighing and tagging. A Quark Expeditions representative will be available to answer your questions and give information about the next day's flight and ship embarkation. After an early breakfast the following morning, your group will transfer to the airport and board our private charter flight to Ushuaia, Argentina, the southernmost city in the world.

### DAY 2 — USHUAIA AND EMBARKATION

In Ushuaia your mandatory transfer package will provide some free time to explore this quaint port town, and also (when flight schedules allow) a tour of Tierra del Fuego National Park. Note: The tour (if available) may take place on either the embarkation or disembarkation day.

We will transfer the group to the ship for embarkation around 4 pm.

### PLEASE NOTE

Luggage will be limited to one checked luggage and one cabin baggage on the flights between Buenos Aires and Ushuaia, and between Punta Arenas and Santiago. Luggage weight restrictions will be confirmed in your final documents received 30 days prior to your trip. There is NO option to store excess luggage as you'll embark and disembark in different cities/countries. Additionally, there is NO option to pay for additional luggage. Please be mindful of these restrictions when packing for your voyage.



## Final Day and Departure

### DISEMBARKATION IN PUNTA ARENAS

The ship is scheduled to arrive in Punta Arenas, Chile between 7 am and 8 am. After breakfast you will bid farewell to your Expedition Team before completing your disembarkation. This process takes approximately one hour. If you have purchased the hotel and transfer package, you will be transferred to the airport for our return charter flight to Santiago.

### DEPARTING FROM SANTIAGO

Flight details will be available closer to departure, however arrival in Santiago is likely to be after most international flights have departed. You may choose to book a stay at the airport hotel in preparation for an early morning departure, or book a transfer and hotel in the city if you will be staying longer.

## Arrival and Departure Transfers

### BUENOS AIRES AIRPORT TRANSFERS

Arrival transfers in Buenos Aires are not included; however, your Travel Professional or Polar Travel Advisor can arrange one for you.

### SANTIAGO AIRPORT TRANSFERS

Departure transfers in Santiago are not included, as the expedition concludes at the airport. If you are spending additional time in Chile's capital, your Travel Professional or Polar Travel Advisor can arrange a transfer into the city for you.

*We request that you provide your flight details to Quark Expeditions at least 30 days prior to traveling.*

### PLEASE NOTE

#### Included Hotel Accommodations:

Your included accommodation begins on Day 1 of your itinerary. The specific hotel will be indicated on your final voyage confirmation. If you are arriving prior to Day 1 of your expedition or are staying after the disembarkation day and would like help booking a pre- or post-stay, please contact your preferred travel agent or Quark Expeditions for hotel options. As accommodation space is limited, you are encouraged to request any extra nights as early as possible.

Weather conditions may occasionally delay our arrival, and airline schedule changes have also been known to occur in Argentina. Booking flexible tickets is always encouraged, as we cannot be held responsible for delays due to unforeseen circumstances.







*Ultramarine*



*World Explorer*



*Ocean Explorer*

# Our Fleet of Small Polar Vessels

Quark Expeditions boasts the most diverse polar-class fleet of any polar operator, and the ability to offer you this incredible voyage on one of our ice strengthened vessels.

The entire Quark Expeditions fleet is built for comfort—and for challenging polar environments, allowing us to take you to places ordinary cruise companies wouldn't dream of going.

Plus, you'll do so while enjoying excellent amenities and superbly comfortable cabins.





# Your Ship

## ULTRAMARINE

The newest ship in our fleet, *Ultramarine* is designed to go beyond the familiar in polar exploration, to immerse guests in parts of the Polar Regions where few humans have ever set foot.

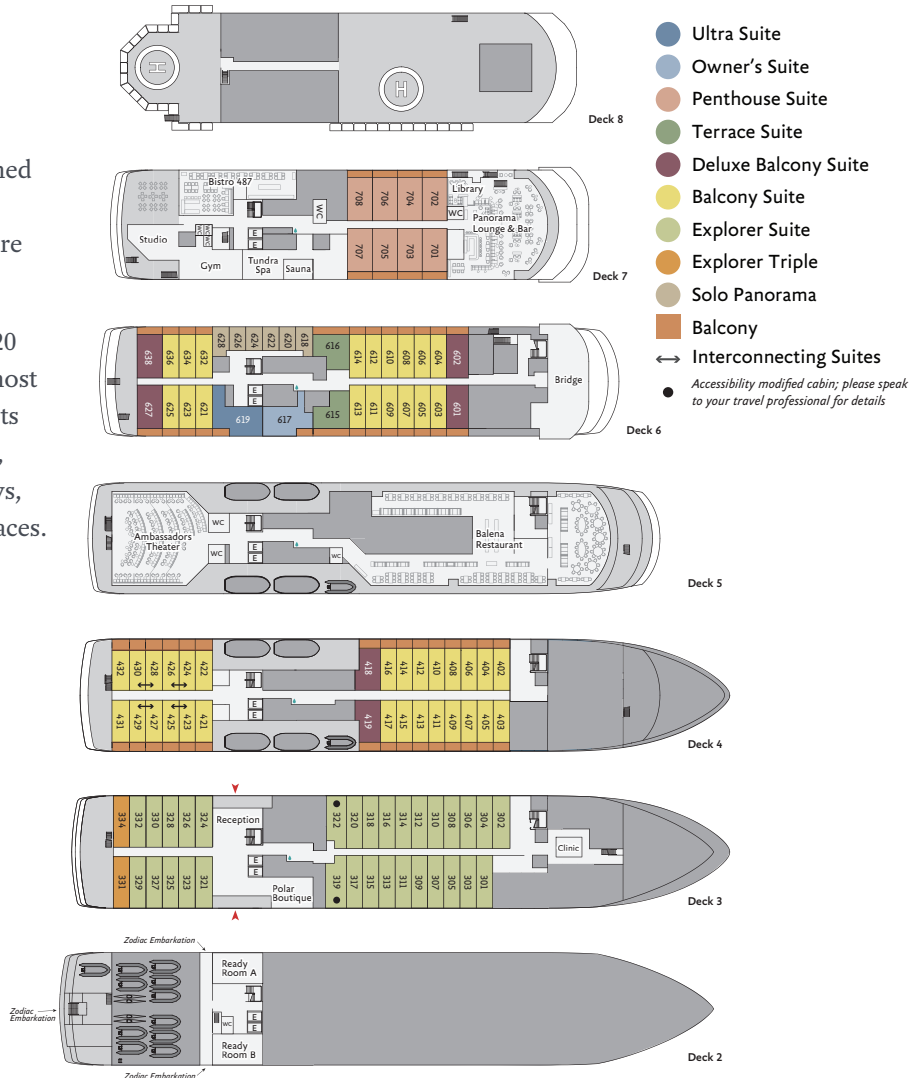
Equipped with two twin-engine helicopters and 20 quick-launching Zodiacs, *Ultramarine* offers the most off-ship adventure activities in the industry. Guests can enjoy two restaurants (Balena and Bistro 487), Tundra Spa, a sauna-with floor-to-ceiling windows, spacious suites and abundant wildlife-viewing spaces. *Ultramarine* also features advanced sustainability systems—which exceed all industry standards.

*Ultramarine* is perfectly designed to deliver the ultimate polar expedition experience.

### SHIP SPECIFICATIONS:

- Staff and Crew: 140
- Guests: 199
- Lifeboats: 4, fully enclosed
- Ice Class: PC6

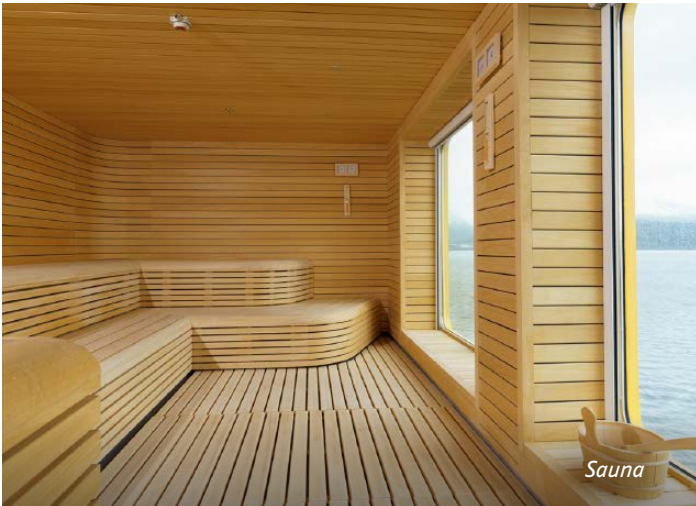
Visit [QuarkExpeditions.com](http://QuarkExpeditions.com) to view deck plan details.







*Deluxe Balcony Suite*



*Sauna*



*Panorama Lounge*



*Fitness Center*



*Balena Restaurant*





# Included Activities

These are included in your trip package.

Ready for a little adventure beyond your ship? Each Quark Expeditions voyage offers a variety of immersive off-ship activities to enhance your experience.

## FLIGHTSEEING

While alpine landscapes are spectacular from the sea, they are even more striking from the air. On board *Ultramarine* you will experience remarkable aerial perspectives on a 10- to 15-minute flightseeing excursion included in the cost of your voyage.

## ZODIAC CRUISING

Zodiacs—rugged inflatable watercraft—are the workhorses of our expeditions, taking you to places the ships can't access, allowing you to reach remote shorelines, explore shallow inlets and search for unique wildlife. Expedition staff make stepping in and out of them safe and comfortable, and your Zodiac drivers will provide active interpretation, making the landscape come even more alive.

## HIKING

Led by experienced staff, exploring on foot is the best way to appreciate the landscapes. Our guides are able to accommodate a range of skill levels to suit every passenger. While you hike, staff will be available to enhance your experience by answering questions about the wildlife, history and geography of the area.

## PRESENTATIONS

Enjoy daily chats with and presentations by our world-class onboard experts—expedition guides, specialists, photography guides and other local experts who will introduce you to the fascinating history, biology, ornithology, glaciology and geology of the region, and much, much more.

## PHOTOGRAPHY

Documenting your voyage so you can take the memories home is a rewarding experience. Our photography guide will help you hone your skills to capture the beauty of Patagonia.

*More information about your Included Activities and Adventure Options, including the necessary experience, physical requirements and cost, is available by contacting your Polar Travel Adviser or travel professional.*



# Adventure Options

These activities cost extra and must be booked in advance of your trip.



## PLEASE NOTE

Pre-booking is required for all paid activities. We recommend booking early, as spaces fill quickly. Please see your pre-departure guide for a list of provided gear for each Adventure Option.

## ✂ PADDLING EXCURSION

If you're interested in kayaking but would like to try something a bit less demanding than Sea Kayaking, you're the perfect candidate to sign up for a one-time paddle on our stable sit-on-top kayaks—perfect for anyone with minimal or no kayaking experience. Small groups of paddlers will be taken out on calm days, with our expert guides always present to provide instruction and help you connect with the polar sea. Pre-book into one of two priority groups. Any subsequent excursions can be booked on board, and groups will be assigned via a lottery as spaces are limited.

## ✂ SEA KAYAKING

Imagine gliding across the surface of a bay in the presence of icebergs and glaciers. Our Sea Kayaking program is a great way to intimately explore your surroundings. A small group of kayakers will plan to go out multiple times per voyage as an alternative to shore landings or Zodiac cruises.

The number of opportunities to kayak is weather dependent, and will be conducted only during calm conditions. Prior kayaking experience is required, and you must be able to do a wet exit to participate. Beginners interested in kayaking should consider participating in the Paddling Excursion.

## 🏄 STAND-UP PADDLEBOARDING

Combining a surfboard with a kayak, stand-up paddleboarding will give you a very personal and unique perspective on Antarctica. Conducted in small groups—in calm bays and harbors, in good weather conditions—and accompanied by a safety Zodiac, one-time stand-up paddleboarding excursions can be pre-booked into one of two priority groups. Any subsequent excursions can be booked on board, and groups will be assigned via a lottery.





### EXCLUSIVE HELI-LANDING

Imagine setting foot in an area of Patagonia that can only be safely accessed by helicopter. With a small group of fellow passengers and expert guides, you'll board one of *Ultramarine's* two twin-engine helicopters to soar off to an exclusive site where no ships can navigate. Expect stunning bird's-eye views during your flight, and then, upon arrival, simply sit back, relax and take in the splendor of Patagonia from "the best seat in the house": alpine amphitheaters, breath-taking summits, and more. At your landing, you'll have time to relax and quietly reflect on the beauty of your surroundings, after which you'll be picked up by the helicopters in the same location and returned to *Ultramarine*.

Each heli-landing experience is uniquely curated by our expedition team, taking conditions, regulations and location capacity into consideration.

### PLEASE NOTE

Pre-booking is required for all paid activities. We recommend booking early, as spaces fill quickly. Please see your pre-departure guide for a list of provided gear for each Adventure Option.



# Departure Dates

Essential Patagonia: Chilean Fjords and Torres del Paine

## ULTRAMARINE

Adventure Options

<i>Dates</i>	<i>Days</i>	<i>Start / End</i>						
<b>ANTARCTIC 2024/2025</b>								
MAR 13 - 27, 2025	15	Buenos Aires / Santiago	\$	\$	\$	\$	Included	



## Raise a Glass and Stay Connected!

See below for specifics on our complimentary Wi-Fi and bar service, which takes effect November 2024.



# Inclusions and Exclusions

## Inclusions

### RATES INCLUDE:

#### For all voyages:

- An official Quark Expeditions parka to keep
- Leadership throughout the voyage by our experienced Expedition Team, including shore landings and other activities
- All Zodiac transfers and cruising as per the daily program
- All shore landings as per the daily program
- Shipboard accommodation with daily housekeeping
- All meals, snacks, soft drinks and juices on board throughout your voyage.
- **NEW** Free beer, standard wines, spirits, and cocktails during bar service hours and dinner
- Complimentary coffee, tea and cocoa available around the clock
- Formal and informal presentations by our Expedition Team and guest speakers as scheduled
- A photographic journal documenting your expedition

#### \*Mandatory Transfer Package Includes:

- One night's pre-expedition hotel accommodation in Buenos Aires with breakfast (Note: The number of guests per room is the same as cabin occupancy on the ship. Due to limited availability, travelers who reserve a suite on board are accommodated in standard rooms at the hotel. Triple rooms may not be available.)
- Group transfer from hotel to airport in Buenos Aires

- A pair of waterproof expedition boots on loan for landings and Zodiac cruising excursions
- Hair dryer and bathrobes in every cabin
- **NEW** Complimentary Wi-Fi service on one device permitting basic Internet browsing, email, posting on social media and voice applications. (Premium packages are available for more data-intensive applications.)
- All miscellaneous service taxes and port charges throughout the program
- All luggage handling aboard the ship
- Emergency Evacuation insurance for all passengers to a maximum benefit of USD \$500,000 per person
- One 10- to 15-minute helicopter flightseeing excursion (weather and logistics permitting)
- Torres del Paine National Park entrance fee and ground transfers
- Estancia visit and ground transfers
- Lunches ashore during Puerto Natales/Torres del Paine excursion days.

- Group flight departing from Buenos Aires' domestic airport (Aeroparque/AEP) to Ushuaia, and returning to Santiago International Airport (SCL)
- Group transfer from Ushuaia airport to the ship, and from ship to Punta Arenas airport (Note: Transfer on arrival in Buenos Aires from airport to hotel at the beginning of the journey is not included. Please make your way to the included hotel.)

## Exclusions

### RATES SPECIFICALLY DO NOT INCLUDE:

#### For all voyages:

- International airfare
- Passport and applicable visa expenses
- Government arrival and departure taxes not mentioned
- Meals unless otherwise specified
- Baggage, cancellation, interruption and medical travel insurance—strongly recommended
- Excess-baggage fees on international and domestic flights
- Mandatory waterproof pants for Zodiac landing and cruising excursions, or any other gear not mentioned
- Laundry, spa services and other personal charges, unless specified
- Phone charges may vary by location
- Our basic complimentary Wi-Fi service does not include Premium packages which enable more data-intensive applications
- Voluntary gratuity at the end of the voyage for expedition staff and shipboard crew
- Additional overnight accommodation
- Arrival and departure transfers, except where explicitly stated
- Adventure Options not listed in Included Activities.



# Your Expedition Team

Our Expedition Leaders—the best in the industry—and their teams share their diverse expertise in subjects as varied as polar history, marine biology, glaciology, ornithology and photography. Their knowledge and enthusiasm will greatly enhance your immersion into the polar environment and further deepen your connection to the Antarctic.

With 33 years of experience bringing passengers to remote Polar Regions and an industry-leading staff-to-guest ratio, we know how to safely handle the unexpected. Ensuring this hard-earned experience is passed on, all our expedition staff undergo comprehensive training at Quark Academy, which provides hands-on polar expedition training prior to any staff member's first voyage, as well as ongoing training for experienced staff.





## Raise a Glass and Stay Connected!

See below for specifics on our complimentary Wi-Fi and bar service, which takes effect November 2024.



# Meals on Board

If there is one constant on board, it is that you'll enjoy delicious meals daily. While meal times may change due to landings and wildlife encounters, you'll always be served three well-prepared meals per day. Most dietary restrictions can be accommodated by letting us know prior to your expedition.

Balena Restaurant, the main diningroom on Deck 5 of *Ultramarine*, features tables that accommodate 2 to 10. Guests can enjoy a quiet dinner with a loved one or join a larger table of new friends. Guests will enjoy views from every seat in addition to direct access to the wraparound deck. Guests can also enjoy a meal in Bistro 487, which offers an indoor/outdoor dining experience—perfect for enjoying the polar landscapes.

Breakfasts and lunches are normally served buffet style, while dinners are served plated. À la carte meals are made at the time of your order, allowing our chefs to prepare each dish to your individual needs, ensuring you receive top-quality meals during the course of your expedition.

Complimentary coffee, tea, cocoa and water stations are available around the clock, while soft drinks and juices are available during meals and when the bar is open—all included in the cost of your package.

**NEW** Enjoy free beer, standard wines, spirits, and cocktails during bar service hours and dinner as part of our new “Raise a Glass and Stay Connected Free” program. Premium wines and champagne are available at extra cost and can be billed to your shipboard account. The well-stocked bars on the ship are open late morning, afternoon and evening, though hours may occasionally change to accommodate the expedition schedule.





# Possible Excursions

## **DAINELLI (AGUILA) GLACIER**

This striking blue glacier, which flows down from the middle of the Darwin mountain range, sits at the end of a tranquil lagoon formed by the glacier's meltwater. An easy hike along the shore takes you to the edge of the glacier.

## **AINSWORTH BAY**

An offshoot of Almirantazgo Sound (Admiralty Sound), Ainsworth Bay is surrounded by pristine sub-polar forests. The bay is fed by the meltwater of the Marinelli Glacier, which flows down from the Cordillera Darwin Icefield.

## **BAHIA BROOKES**

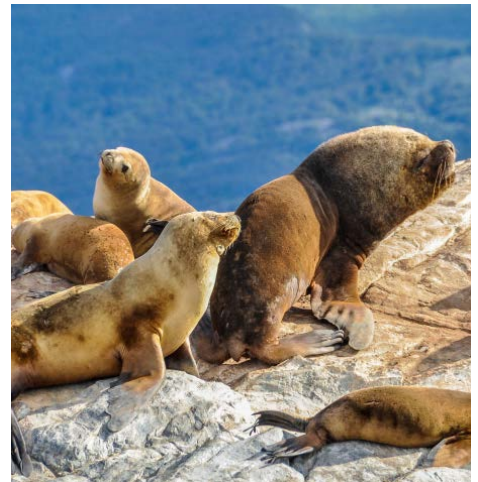
Located in Almirantazgo Sound (Admiralty Sound), in the heart of Alberto de Agostini National Park, this bay is the site of several glaciers, the most impressive being the North Brookes Glacier. The bay is also an ideal locale for learning about glaciology and how glaciers shape the landscape.

## **CANAL DE LAS MONTAÑAS**

Situated within the Kawésqar National Park (formerly Alacalufes National Reserve), this 41-mile (66 km) long channel is flanked by two majestic mountain ranges, the Cordillera Riesco to the east and the Cordillera Sarmiento to the west. Sightings of sea lions and dolphins are possible.

## **CAPE HORN**

Sitting at the southernmost tip of Tierra del Fuego, on Hornos Island, Cape Horn was named by Dutch navigator Willem Schouten, who discovered and first rounded the cape in 1616 and named it in honor of his birthplace, Hoorn, Holland. Filled with rugged, natural beauty, the historic windswept cape is located within Cabo de Hornos National Park, which was designated a UNESCO Biosphere Reserve in 2005. The Chilean Navy mans the lighthouse on the island.





### MARTA ISLAND

Marta Island, along with nearby Magdalena Island, is a designated natural monument, Monumento Natural Los Pingüinos (The Penguins Natural Monument), and has been a protected area since 1982. The small island is home to a large colony of sea lions, as well as an abundance of seabirds, including cormorants, skuas and gulls.

### PIA GLACIER

In the Beagle Channel, Pia Glacier is situated in a fjord in the Cordillera Darwin (Darwin Mountains), the southern part of the Andes mountain range. This area provides outstanding opportunities for taking the Zodiacs out for a shore landing and hiking to a spectacular lookout. Though the provenance of the glacier's name remains unconfirmed, some believe Alberto Maria de Agostini, an Italian

missionary, mountaineer and explorer who lived in Tierra del Fuego, named it after Princess Maria Pia of Savoy, the daughter of Italy's first king.

### TUCKERS ISLETS

Located in Almirantazgo Sound (Admiralty Sound), a stunning offshoot of the Strait of Magellan, this tiny group of islands is covered in grasses, mosses and small trees, providing a verdant backdrop for viewing a large colony of nesting Magellanic penguins. Other bird species that may be spotted here include king and rock cormorants, oystercatchers, Chilean skuas, kelp geese and dolphin gulls.

### EXPEDITION SPIRIT

Embracing the unexpected is part of the legacy—and excitement—of expedition travel. When traveling in extremely remote regions, your Expedition Team must consider the sea and weather to guide the route and itinerary details. This itinerary is a tentative outline of what you may experience on this voyage; please be aware that no specific itinerary can be guaranteed. By the same token, wildlife encounters as described are expected, but not guaranteed. Your Expedition Team will use their considerable experience to seek out wildlife in known habitats, but the presence of any particular species of bird or marine wildlife is not guaranteed.



# What to pack on your Patagonia expedition

## BY SEA AND AIR

All transfers ship to shore, helicopter flights and Zodiac/ship cruising.

- Waterproof pants (mandatory for every Zodiac and helicopter ride)
- Base-layer wool or synthetic top\*
- Base-layer wool or synthetic bottom\*
- Mid-layer warm or fleece top\*
- Mid-layer warm or fleece bottom\*
- Warm wool or synthetic socks (keep a dry pair in your bag, and bring extras for layering)
- Glove liners \*     Hand and feet warmers\*     Binoculars
- Waterproof gloves or mitts (bring an extra, lighter pair for hiking)
- Scarf, buff, or other face protection
- Warm hat that covers ears (bring an extra)
- Waterproof, lightweight backpack or dry sack and/or rain sleeve for camera or a waterproof phone case (to keep camera and gear dry)
- Polarized sunglasses with UV protection (consider bringing an eyewear retainer: string/clip etc.)
- Ski goggles (for Zodiac cruising on snowy or windy days)

\*recommended layering depending on the conditions of the day and reflecting your personal thermo-regulation comfort levels.

## BY LAND (Shore Excursions and Hiking)

In addition to the gear requirements (as above) mandatory for the transit from ship to shore, it is recommended to bring:

- Worn-in Hiking footwear: While Muck-boots are provided and encouraged for most shore excursions, additional hiking footwear (Goretex-lined boots or similar water-proof hiking boots) can add to your hiking comfort, especially if you are a keen hiker
- (Smart) Wool or synthetic hiking socks for above footwear (bring an extra pair)
- Lightweight and quick-dry, trekking pants that may or may not convert to zip-off shorts\* (\*depending on your thermo-regulation)
- Breathable waterproof pants\* and rain jacket\*\* for outdoor activities in inclement weather (\*can be the same pair you use for Zodiac operations (can be outer shell of complimentary Quark 3in1 Parka)
- Comfortable long or short-sleeve shirt for hiking either synthetic/quick-dry or merino (smart) wool
- (Hiking) gloves (medium thickness, waterproof preferred)
- Hat, buff or scarf (for wind and weather protection)
- UV protection (hat, polarized sun glasses, sun block, lip balm)
- Collapsible walking stick for hikes (if required).  
Quantities are available on every vessel to borrow.
- Additional reusable (thermos-regulating) water bottle (in addition to the reusable collapsible water bottle provided)

**WHAT TO BRING!** Packing for the Polar Regions doesn't have to be daunting, and to make it easier for you, all Quark Expeditions voyages include a Quark parka to keep, and a loan of insulated waterproof boots. Additional suggested items include:

## TO WEAR ON BOARD

- The complimentary Quark 3-in-1 Parka provided on board is designed with a waterproof shell that can be worn out on deck, and a removable liner that you can wear to stay comfortable indoors)
- Comfortable casual clothing like lighter shirts, pants or jeans, etc. (in case the ship gets warm)
- Comfortable non-slip closed-toed, heelless shoes (flip flops, sandals or slip-on shoes should not be worn on board due to safety concerns)
- Workout attire (for the fitness center!)
- Swimsuit (for the Polar Plunge! Some vessels may also have a pool, hot tub, sauna and/or steam room. See your ship book for details.)

**Just a reminder:** No formal evening wear required on our voyages but if you would like to bring something a little more dressy for the Captain's welcome and farewell cocktails you may certainly do so!

## ADDITIONAL ITEMS

- Passport, visas, immunization records, travel documents, etc. as required
- Camera gear—complete with charger, storage medium, transport and cleaning kit (lens cloth etc.) and extra batteries
- Reusable waterproof bags or plastic bags with zippers (to keep small items organized and cameras dry)
- Voltage converters and plug adapters (see ship book for details)
- Seasickness, indigestion, headache, or other medications
- Earplugs and eye masks for sleeping
- Moisturizer for face and hands (skin dryness due to wind and temperature changes)
- Credit card and small amount of local currency (see pre-departure book for more details)

- › To view our packing checklist online, visit: [QuarkExpeditions.com/What-to-Pack/Patagonia](https://www.quarkexpeditions.com/What-to-Pack/Patagonia)
- › Related topics are covered on our Frequently Asked Questions page: [QuarkExpeditions.com/Frequently-Asked-Questions](https://www.quarkexpeditions.com/Frequently-Asked-Questions)



Scan this QR code or [click here](#) to watch our video on what to pack before you go!

## WEATHER CONDITIONS AND TEMPERATURES

Polar weather is extremely variable; temperatures may hover around the freezing mark and winds can be strong. The extended daylight warms sheltered areas so that you may sometimes find it warm enough for t-shirts. However, you may encounter rain, snow squalls, fog and white-outs during an expedition and should be ready for any conditions.





The Leader in Polar Adventures

TO BOOK YOUR NEXT ADVENTURE

Contact your Travel Professional  
or a Quark Expeditions Polar Travel Adviser

**TOLL FREE AND LOCAL NUMBERS:**

North America (Toll Free) **1 888 332 0008**

U.K. Tel **+44 203 514 2712**

U.K. (Toll Free) **0 808 120 2333**

Australia Tel **+61 2 72580333**

Australia (Toll Free) **+61 1800 953518**

France Tel **+33-1 80 14 01 05**

France (Toll Free) **08 05 08 66 46**

**QuarkExpeditions.com**

**PHOTO CREDITS** (over all Expedition Brochures for the Antarctic 2024/25 season):

Acacia Johnson; David Merron; Michelle Sole; Nicky Souness; Samantha Crimmin; Hugo Perrin; Taylor Cranney; Sam Edmonds; Abbey Weisbrot; Hans Lagerweij; Rogelio Espinosa; Cindy Miller Hopkins; Grange Productions; Dagny Ivarsdottir; Luis Berteá; Adobe Stock

**EXPEDITION BROCHURE**  
*February 22, 2024*